

Epiphone®





Explanation P = thumb; i = 1st finger; m = 2nd finger; a = 3rd finger

# Epiphone

THE NAME THAT IS A  
GUARANTEE



**Our passion** has always been about more than just making guitars. It has been about making music. It has been about understanding what is inside every musician that makes them want to, have to, express themselves. And understanding the myriad musical styles, where they are going and how they might develop. For over one hundred and twenty-five years we have continually looked for new and better ways to help players take their music farther.

Epi Stathopoulos, our founder and namesake, was always on the forefront of music. He was the first instrument maker to embrace Jazz music and led the industry away from mandolin and banjo production and into making guitars. At the age of twenty-four Epi obtained his first of many patents that would change fretted instrument construction forever. The extension truss rod design, the first pick-up with individual pole pieces, and the Tonexpressor – the precursor to the modern day “wah-wah” pedal – were all Epiphone innovations. But perhaps the greatest contribution to guitar making came in 1941 while Les Paul was experimenting in the Epiphone factory. These experiments led to the Les Paul “Log” and the first solid-body electric guitar.

Epi’s vision of the future of music and guitar, as well as the importance of his work could be seen by, and in, those who chose to play an Epiphone. Musicians who themselves were visionaries. George Van Epps, Harry Volpe, Howard Roberts, Joe Pass and other Jazz players would make music history with an Epiphone guitar, as would Blues legend, John Lee Hooker. And the Beatles, who recorded Paperback Writer, Ticket To Ride, and the most recorded song ever written, Yesterday, with Epiphone guitars they purchased in 1964. It is an incredible legacy that continues today with Noel Gallagher, Lenny Kravitz and other artists who choose to make their music with an Epiphone.

The same spirit of innovation that drove the Stathopoulos to start pushing the boundaries of guitar design over one hundred and twenty-five years ago is alive and well at Epiphone today. Styles of music will continue to evolve, new technologies will come and go and new players will continue to take music and guitar in new directions. But our passion for making music and our mission of providing musicians with a great instrument they can rely on to express themselves will always remain constant.

ALL-NEW CONTROL PANEL

EPiPHONE

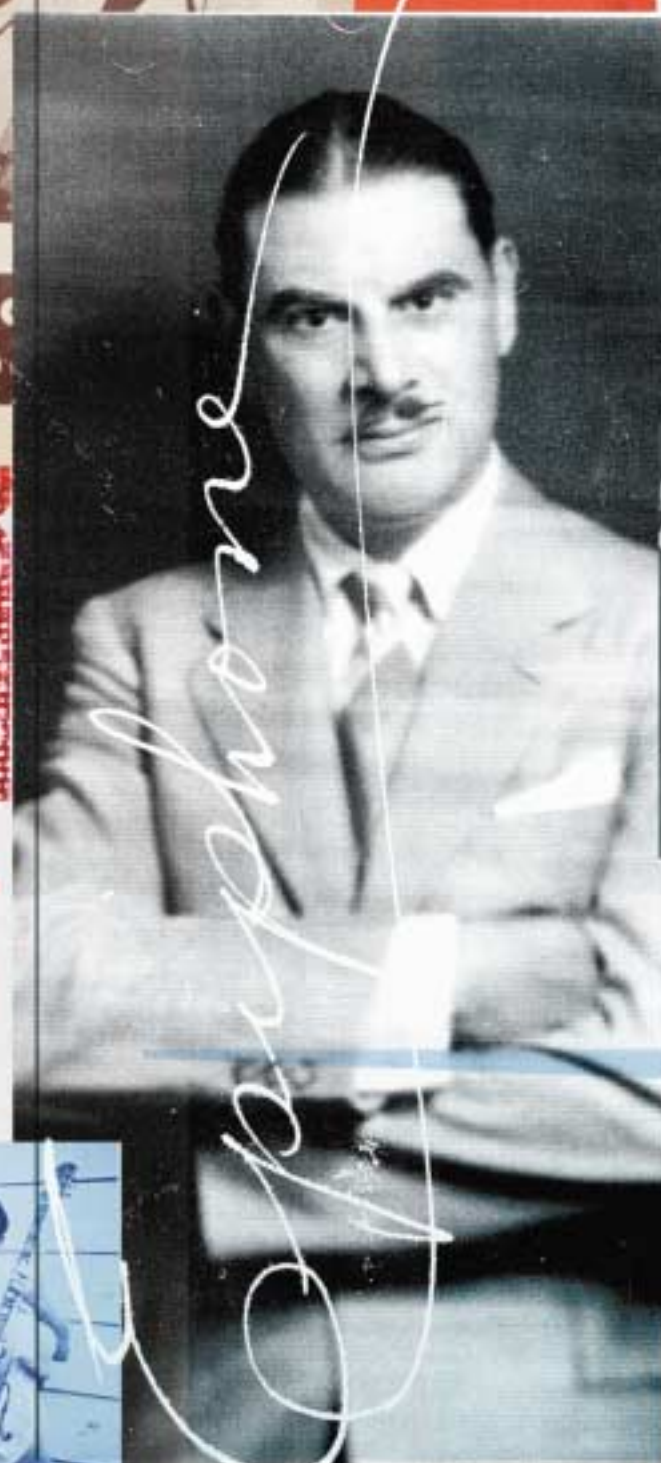
EASY TO OPERATE

MAKING



# EPHPHONE

et al  
RONTI  
UMENTA



*John Johnson*



"BEST"

amps



*John Johnson*





*the guitars that built the house of stathopoulos and epiphone are still our foundation. as the name implies, each of these guitars is essential to the history and future of epiphone, and to music itself. classic shapes and sounds from guitars that helped shape the sound of jazz, rock & roll and other styles of music as we know them, as well as new designs that will be the classics of tomorrow.*

## essentials



# the archtops

## emperor regent™

> Huge body, huge sound, great personality. The Regent's Spruce top and floating mini-humbucker make this guitar an out and out jazzier with sweet tone!

One of the "100 Best Buys" *Guitar Player*, Nov, 1997



*Since 1873, Epiphone has been making fine quality archtop instruments. From violins to mandolins to guitars, each instrument is carefully built to exacting specifications using the finest materials. If you want a great archtop instrument from someone who knows archtops, get an Epiphone!*

## broadway™

> A big body for all occasions. Just like the Regent, but with twin humbuckers, 3-way switch, 2 volume and 2 tone controls.



## joe pass emperor II™

Authorized By & Designed In Cooperation with Joe Pass

> When the late, great Joe Pass played the guitar, people listened. Pick up an Emperor II and you just might get a similar response! (Also available Left-Handed)



Model	Pickups	Hardware	Scale	Nut Width	Nck	Neck Mat.	FB / Inlay	Binding	Body Mat.	Top	Also Available
Emperor Regent	1 Floating Mini-HB	Gold	25.5"	1.68"	Set	Maple	RW/Block & Tri	B/N/H	Lam. Maple	Select Spruce	
Broadway	2 Humbuckers	Gold	25.5"	1.68"	Set	Maple	RW/Block & Tri	B/N/H	Lam. Maple	Select Spruce	
Joe Pass Emperor II	2 Humbuckers	Gold	24.75"	1.68"	Set	3-pc Maple	RW/Block	B/N/H	Lam. Maple	Select Spruce	Left-Handed





## noel gallagher union jack supernova™

> Several years ago, Oasis guitarist Noel Gallagher had a Union Jack flag custom painted on his Epiphone Sheraton. In the past few years, many have tried to copy his idea but now, here's the "real-thing." Presenting... the Noel Gallagher Union Jack SuperNova complete with all the same great features of the SuperNova but now with the distinctive red, white and blue British flag.



## noel gallagher supernova™

> Noel Gallagher, guitarist for Oasis - Britain's #1 rock band - worked closely with Epiphone engineers to perfect his Signature Model. It looks smashing and plays like budda!

Model	Pickups	Hardware	Scale	Nut Width	Nck	Neck Mat.	FB / Inlay	Binding	Body Mat.	Top	Tailpiece
SuperNova	2 Humbuckers	Chrome	24.75"	1.62"	Set	Mahogany	RW/Split Parall	B/N	Lam. Maple	Lam. Maple	StopBar
Union Jack SuperNova	2 Alnico V Epi '57 Classics	Chrome	24.75"	1.62"	Set	Maple	RW/Split Parall	B/N	Lam. Maple	Lam. Maple	StopBar



## jorma kaukonen riviera™ deluxe

> After being so impressed with the sound and quality of his friend Jack Casady's signature bass, Jorma Kaukonen of Jefferson Airplane and Hot Tuna decided that he wanted Epiphone to make his signature instrument too! Built to Jorma's specifications, this beautiful instrument has all the great features of our regular Riviera except:

- Gold hardware
- Gold VibroTone tailpiece
- Grover machine heads
- Epiphone '57 Classic, Alnico-V pickups
- Dot fret markers



## b. b. king lucille™

Authorized by B.B. King and Gibson USA

> Long live King!.. of the Blues that is, *Mister B.B. King!* A most gracious and articulate man, the foremost ambassador of the blues, B.B. King, has influenced generations of guitarists with his voice, professionalism, sweet single-note runs and probably the best left-hand vibrato in the business. And his most identifiable trademark has been his guitar...

Lucille. The story of Lucille is well known, but bears repeating. On a cold night in a joint in Arkansas, 1949, a young B.B. King was playing. A barrel with kerosene in it was set up in the middle of the floor to provide heat. Two men fighting over a lady knocked the barrel over and soon turned the place into an inferno. Everyone scattered, including B.B. Realizing he'd left his guitar, he ran back inside to save it, almost losing his life in the process. The next morning he discovered the name of the woman the two men were arguing over. Her name was Lucille. B.B. named that Gibson and every Gibson since, Lucille, "to remind me never to do a thing like that again."

Some of B.B.'s personal touches on this signature model include a TP-6 fine-tuning tailpiece, semi-hollow body design with no soundholes and that famous name on the headstock. With twin humbuckers, Vari-Tone switch, stereo output and awesome looks that are synonymous with the blues... this lady is sweet!

### Vari-Tone Control

This control works through a reduction of the fundamental harmonic frequencies. The higher the setting, the greater the loss of "lows". Positions 3 & 4 produce a sound similar to a single-coil pickup.

- |                             |                              |
|-----------------------------|------------------------------|
| Position 1: Bypass          | Position 4: 16db at 620 hz   |
| Position 2: 5db at 1950 hz  | Position 5: 18.5db at 360 hz |
| Position 3: 12db at 1100 hz | Position 6: 21db at 120 hz   |



Model	Pickups	Hardware	Scale	Nut Width	Nck	Neck Mat.	FB / Inlay	Binding	Body Mat.	Top	Tailpiece
B. B. King Lucille	2 HBs w Stereo Vari-tone	Gold	24.75"	1.68"	Set	Maple	RW/Block	B/N/H	Lam. Maple	Lam. Maple	TP-6
Kaukonen Riviera Deluxe	2 '57 Classic Humbuckers	Gold	24.75"	1.62"	Set	Maple	RW/Dot	B/N	Lam. Maple	Lam. Maple	VibroTone



## sheraton™ II

"A price / performance ratio that seems to good to be true."

*Guitar World, Dec. 1994*

> If it's good enough for the Boogie Man, John Lee Hooker, it's good enough for anyone!

(Also available Left-Handed)



## riviera™

> With twin "New York" mini-humbuckers and solid center block, the Riviera maintains vintage appearance and thoroughly modern tone with reduced feedback.

## the dot™

Authorized by Gibson USA

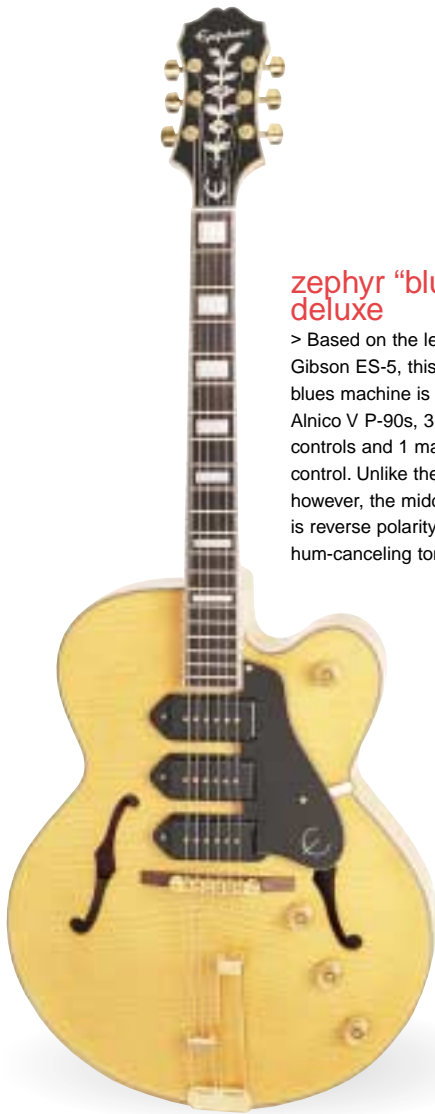
> Everyone wants to own a Gibson ES-335 "Dot." Now everyone can with this Epiphone, authorized by Gibson USA. THE original ES style semi-hollowbody introduced in the spring of 1958.



Model	Pickups	Hardware	Scale	Nut Width	Nck	Neck Mat.	FB / Inlay	Binding	Body Mat.	Top	Tailpiece	Also Available
Sheraton II	2 Humbuckers	Gold	24.75"	1.68"	Set	3-pc Maple	RW/Block & Tri	B/N/H	Lam. Maple	Lam. Maple	StopBar	Left-Handed
Riviera	2 "NY" Mini-HBs	Chrome	24.75"	1.68"	Set	Mahogany	RW/Parallelogram	B/N	Lam. Maple	Lam. Maple	Trapeze	
Dot	2 Humbuckers	Chrome	24.75"	1.68"	Set	Maple	RW/Dot	B	Lam. Maple	Lam. Maple	StopBar	







### zephyr "blues" deluxe

> Based on the legendary 1949 Gibson ES-5, this big bodied blues machine is fitted with 3 Alnico V P-90s, 3 volume controls and 1 master tone control. Unlike the original however, the middle pickup is reverse polarity for hum-canceling tone!



### zephyr™ regent

> Simply beautiful! That's how to describe this classic archtop featuring 1 humbucker, 1 volume and 1 tone. Not a lot of hardware, just great jazz tone!



### casino™

> Epiphone's original semi-acoustic, the Casino has changed little over the years. The combination of the hollow body and twin P-90's deliver a warm yet bright sound that sparkles!

Model	Pickups	Hardware	Scale	Nut Width	Nck	Neck Mat.	FB / Inlay	Binding	Body Mat.	Top	Tailpiece
Zephyr Blues Deluxe	3 P-90s (M = Rev. Pol)	Gold	25.5"	1.68"	Set	Maple	RW/Block	B/N/H	Flame Maple	Flame Maple	Frequensator
Zephyr Regent	1 Humbucker	Gold	25.5"	1.68"	Set	Maple	RW/Split Parall	B/N	Mahogany	Lam. Maple	Trapeze
Casino	2 Alnico-V P-90s	Chrome	24.75"	1.62"	Set	Mahogany	RW/Parallelogram	B/N	Lam. Maple	Lam. Maple	Trapeze



### alleykat™

> If you're looking for a guitar that's as unique as you are, check out the AlleyKat. Like the FlameKat™ it features the Kat-Series small, semi hollow-body design. But this guitar features a Tune-o-matic bridge, StopBar tailpiece and a combination of a '57 Classic Humbucker in the bridge position and a "New York" Mini humbucker in the neck position. The result is a guitar with great sustain, comfort and sound! Available in HS, TB and VS.



### flamekat™

> An All-New Epiphone Design! The ultimate road-rocker, equipped with 2 "New York" mini-humbuckers and VibroTone tailpiece. With Dice knobs, Dice Inlay and Ebony finish with Flame decal... It's so Hot it's Cool!

### wildkat™

> Like the AlleyKat and the FlameKat™, the Wildkat features the small semi-hollow body. And we've added two Alnico V P-90s for classic tone and a chrome VibroTone tailpiece. What a sound! Available in AN, TB and TQ



Model	Pickups	Hardware	Scale	Nut Width	Nck	Neck Mat.	FB / Inlay	Binding	Body Mat.	Top	Tailpiece
AlleyKat	1 '57 Classic HB, 1 "NY" Mini-HB	Chrome	24.75"	1.68"	Set	Maple	RW/Block	B/N	Mahogany	Flame Maple	StopBar
FlameKat	2 "NY" Mini-HBs	Chrome	24.75"	1.68"	Set	Maple	RW/Dice	B	Mahogany	Lam. Maple	VibroTone
WildKat	2 Alnico-V P-90s	Chrome	24.75"	1.68"	Set	Maple	RW/Dot	B/N	Mahogany	Flame Maple	VibroTone





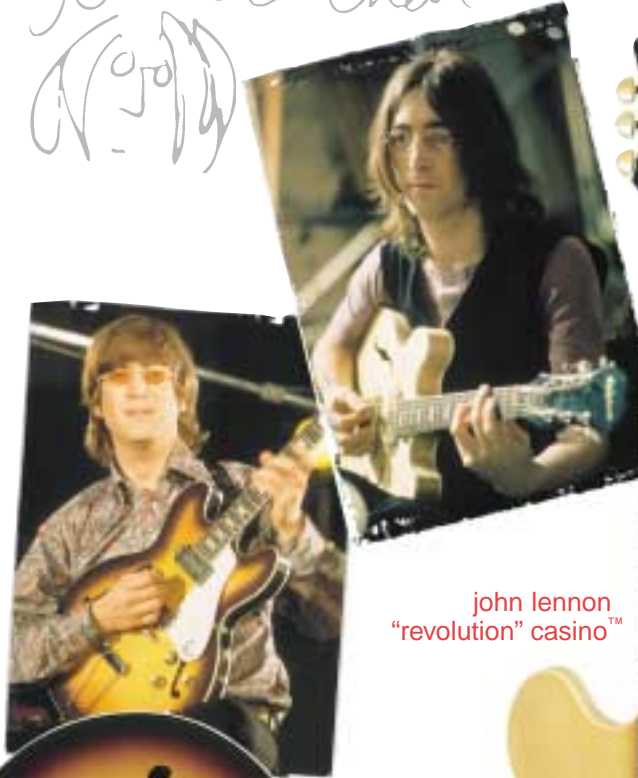
*In the 60s, Epiphone produced some of the most sought-after archtops in their line at the Gibson plant in Kalamazoo, MI. Modeled after the the venerable Gibson 335, the Epiphone archtops featured all Gibson parts and electronics like the too-cool Gibson USA "dog-eared" P-90 and the new Mini-Humbucking pickup developed by Gibson exclusively for Epiphone. Now, we've brought them back, with the same exceptional Kalamazoo tooling and Gibson features and specifications. History is waiting for you at your nearest Epiphone dealer today!*

## usa collection



# Epiphone USA Collection

*John Lennon*  
*(1965)*



john lennon  
"revolution" casino™

## john lennon limited edition usa casinos

> In cooperation with Yoko Ono, Epiphone proudly introduces two *Limited Edition* John Lennon Casinos. The John Lennon 1965 Casino is a reproduction of the guitar as John originally purchased it with the sunburst finish and stock hardware. In 1968, the newly sanded down to the bare wood, "natural" version of his Casino can be heard on the recording sessions for "The White Album." The John Lennon "Revolution" Casino is a reproduction of the "stripped" guitar as it remains today. A portion of the proceeds from the sale of each will be donated to The BMI Foundation, Inc. for the John Lennon Scholarship Fund which supports music education.

*These exceptional instruments feature the following specifications:*

- Bound original body shape and materials, neck shape and larger original style headstock, 17° angle - mid '60s Kalamazoo tooling
- Body materials - 5-layer (Maple/Birch/Maple/Birch/Maple)
- Top contour bracing - Spruce with original relief cut and spacing
- One-piece mahogany neck with 14° grain orientation, Neck joint at 16th fret
- Rosewood fingerboard with .062" thick pearloid, parallelogram fret markers and elliptical neck shape - Scale - 24.75"
- Two Nickel plated Gibson P-90s with original pole spacing
- Nickel plated Gibson hardware, Switchcraft 3-way toggle
- Gold plated Grover™ machine heads on "Revolution"
  - Nitro Cellulose Lacquer finish, hand buffed
  - 3-ply (W/B/W) pickguard with aluminum foil "E" ("65" only)
    - Vintage style case with shroud
    - Stamped with John's original serial number label
    - Hand numbered label inside
  - Nickel ABR Bridge with nylon saddles  
*AN and VS only*



john lennon  
"1965" casino™

Model	Pickups	Hardware	Scale	Nut Width	Nck	Neck Mat.	FB / Inlay	Binding	Body Mat.	Tailpiece
John Lennon "Revolution"	Gibson USA P-90s	Nickel	24.75"	1.68"	Set	Mahogany	RW/Parallelogram	B/N	5-lyr Maple/Birch	Trapeze
John Lennon "1965"	Gibson USA P-90s	Nickel	24.75"	1.68"	Set	Mahogany	RW/Parallelogram	B/N	5-lyr Maple/Birch	Trapeze



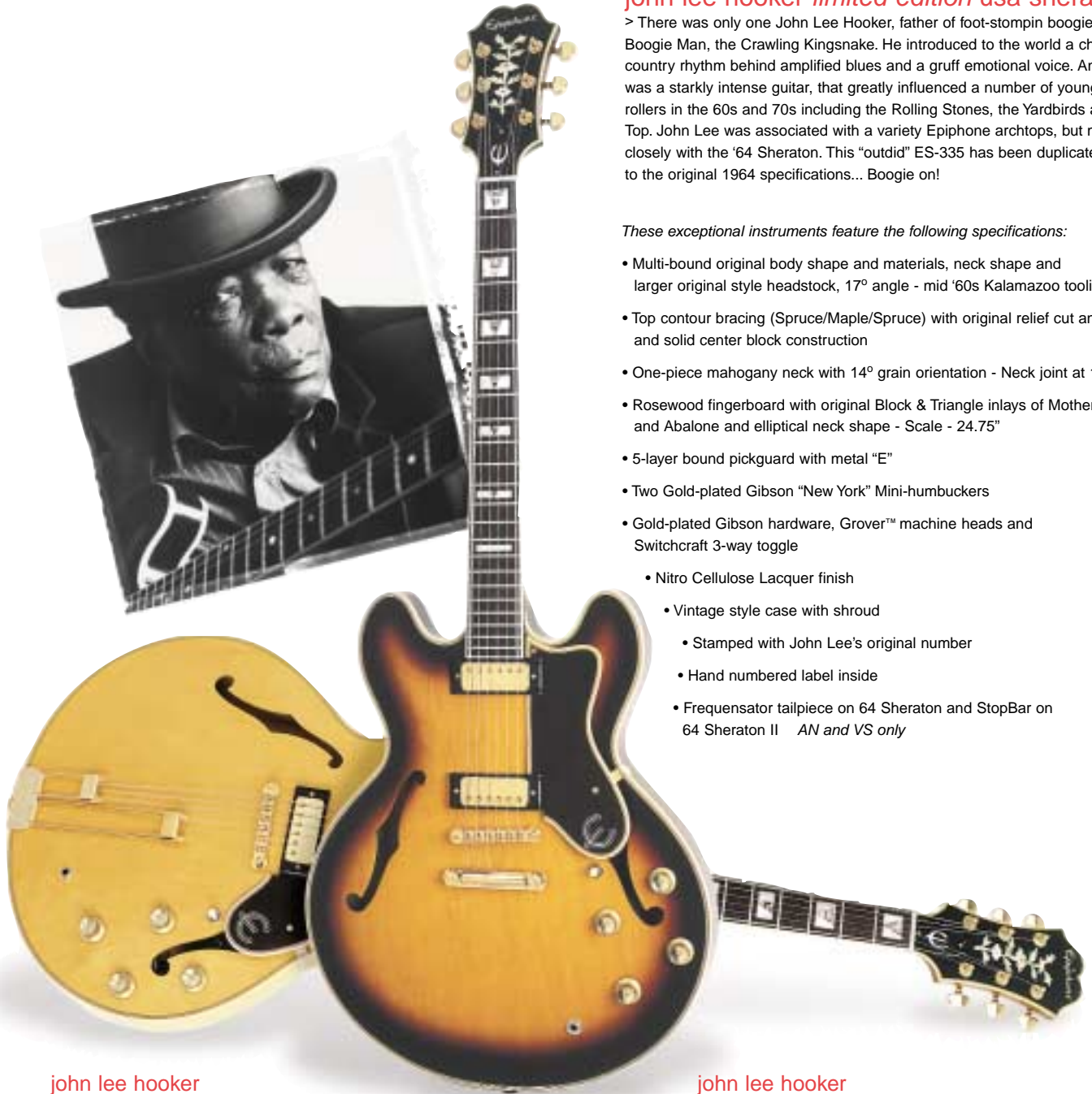
# Epiphone USA Collection

## john lee hooker limited edition usa sheratons

> There was only one John Lee Hooker, father of foot-stompin boogie, the Boogie Man, the Crawling Kingsnake. He introduced to the world a chugging country rhythm behind amplified blues and a gruff emotional voice. And on top was a starkly intense guitar, that greatly influenced a number of young rock and rollers in the 60s and 70s including the Rolling Stones, the Yardbirds and ZZ Top. John Lee was associated with a variety Epiphone archtops, but most closely with the '64 Sheraton. This "outdid" ES-335 has been duplicated exactly, to the original 1964 specifications... Boogie on!

*These exceptional instruments feature the following specifications:*

- Multi-bound original body shape and materials, neck shape and larger original style headstock, 17° angle - mid '60s Kalamazoo tooling
- Top contour bracing (Spruce/Maple/Spruce) with original relief cut and spacing and solid center block construction
- One-piece mahogany neck with 14° grain orientation - Neck joint at 19th fret
- Rosewood fingerboard with original Block & Triangle inlays of Mother of Pearl and Abalone and elliptical neck shape - Scale - 24.75"
- 5-layer bound pickguard with metal "E"
- Two Gold-plated Gibson "New York" Mini-humbuckers
- Gold-plated Gibson hardware, Grover™ machine heads and Switchcraft 3-way toggle
- Nitro Cellulose Lacquer finish
- Vintage style case with shroud
  - Stamped with John Lee's original number
  - Hand numbered label inside
  - Frequensator tailpiece on 64 Sheraton and StopBar on 64 Sheraton II *AN and VS only*



john lee hooker  
1964 sheraton™

john lee hooker  
1964 sheraton™ II

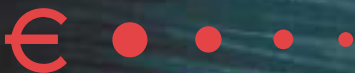
Model	Pickups	Hardware	Scale	Nut Width	Nck	Neck Mat.	FB / Inlay	Binding	Body Mat.	Tailpiece
JLH 1964 Sheraton	2 Gibson NY Mini-Humbuckers	Gold	24.75"	1.68"	Set	Mahogany	RW/Block & Triangle	B/N/H	Lam. Maple/Spruce	Frequensator
JLH 1964 Sheraton II	2 Gibson NY Mini-Humbuckers	Gold	24.75"	1.68"	Set	Mahogany	RW/Block & Triangle	B/N/H	Lam. Maple/Spruce	StopBar





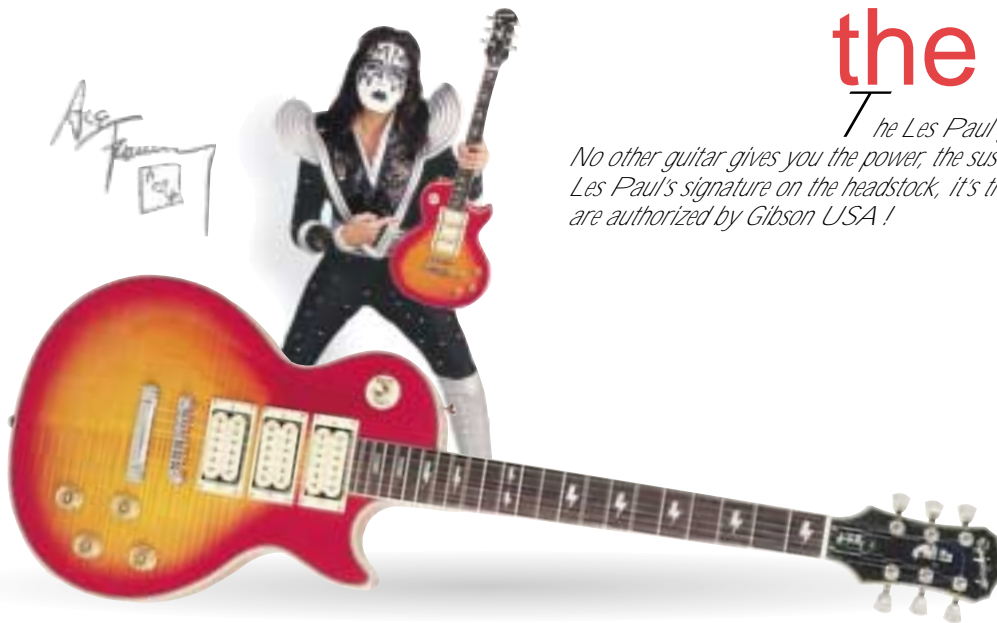
# classics

*for decades, epiphone and gibson were the fiercest of competitors. that all changed when the companies merged in 1957 and began working in tandem to create some of the greatest guitars the world has ever known. today epiphone is authorized by gibson usa to precisely replicate these classic shapes that have defined rock guitars for generations.*



# the les pauls

The Les Paul guitar is synonymous with Rock and Roll. No other guitar gives you the power, the sustain and the sound of a Les Paul. If it's got Les Paul's signature on the headstock, it's the real thing... A ccept no substitutes! All are authorized by Gibson USA!



## ace frehley les paul® custom

> Here it is folks... Epiphone's version of the Ace Frehley LP Custom - complete with three DiMarzio (USA Super Distortion Humbuckers) pickups, lightning bolt fingerboard inlays and Ace's face right on the headstock. With a multi-bound, premium flame maple top, you've got a guitar that looks as good as it sounds. Kiss me... I must be dreaming!

## les paul® black beauty

> Renowned for its sparkling tone and smooth playing action, the fabulous styling of the Black Beauty is the ultimate. And with the addition of a third humbucker, Expressive, Powerful... A Les Paul!



## les paul® custom flametop

> The Custom's timeless appointments of block inlay, multiple binding, gold hardware, split diamond on the headstock plus the addition of a beautiful Flame Maple top!

## '56 les paul® goldtop

> When the first Les Paul debuted in 1952, you could get it in any color as long as it was gold. Feel over 50 years of guitar heritage beneath your fingers with tone that comes from a "classic" set-up; P-90s and a StopBar tailpiece!



Model	Pickups	Hardware	Scale	Nut Width	Nck	Neck Mat.	FB / Inlay	Binding	Body Mat.	Top	Also Available
Ace Frehley LP Cust	3 DiMarzio USA HBs	Chrome	24.75"	1.68"	Set	Maple	RW/Lightning Bolt	B/N/H	Mahogany	Flame Maple	
Les Paul Black Beauty	3 Humbuckers	Gold	24.75"	1.68"	Set	Mahogany	RW/Block	B/N/H	Mahogany/Alder	Mahogany/Alder	
Les Paul Custom Flame	2 Humbuckers	Gold	24.75"	1.68"	Set	Maple	RW/Block	B/N/H	Mahogany/Alder	Flame Maple	
'56 LP GoldTop	2 Alnico-V P-90s	Chrome	24.75"	1.68"	Set	Mahogany	RW/Trapezoid	B/N	Mahogany/Alder	Mahogany/Alder	



### les paul® custom

> Black n' Gold... Rock n Roll.  
The Custom has become an Icon - the "tuxedo" of LPs. Class and style rolled into one beautiful guitar! Also comes in Alpine White.



### les paul® standard

> Its Solid Mahogany body and Flame Maple top generate the full range of the musical spectrum, from guttural lows to crystal highs. The Les Paul Standard has been the driving force behind the blues/rock explosion of the 60s, the southern rock sound of the 70s and provided the signature sound of rock bands of the 90s. And now, at the beginning of the 21st Century, it's still the industry standard... Nothing else even comes close!

### les paul® studio

> This set neck Les Paul offers all the characteristics of its Gibson cousin and all those fat Les Paul tones!



### les paul® -100

> Classic Les Paul styling with a slimmer body and bolt neck for enhanced comfort and low cost effectiveness with no concession to tone or quality... Pure Les Paul!

Model	Pickups	Hardware	Scale	Nut Width	Nck	Neck Mat.	FB / Inlay	Binding	Body Mat.	Top	Also Available
Les Paul Custom	2 Humbuckers	Gold	24.75"	1.68"	Set	Mahogany	RW/Block	B/N/H	Mahogany/Alder	Mahogany/Alder	
Les Paul Standard	2 Humbuckers	Chrome	24.75"	1.68"	Set	Mahogany	RW/Trapezoid	B/N	Mahogany/Alder	Flame Maple	Left-Handed
Les Paul Studio	2 Humbuckers	Chrome	24.75"	1.68"	Set	Mahogany	RW/Trapezoid		Mahogany/Alder	Mahogany/Alder	
Les Paul-100	2 Open Coil HBs	Chrome	24.75"	1.68"	Bolt	Mahogany	RW/Dot		Alder/Mahogany	Alder/Mahogany	Left-Handed



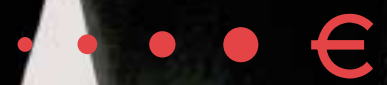


tell you

Epiphone®  
**Goths**

play it for

Model	Pickups	Hardware	Scale	Nut Width	Nck	Neck Mat.	FB / Inlay	Binding	Body Mat.	Top
Les Paul Studio Goth	2 Open Coil HBs	Black	24.75"	1.68"	Set	Mahogany	Ebony/12th		Mahogany	Alder
Flying V Goth	2 Open Coil HBs	Black	24.75"	1.68"	Set	Mahogany	Ebony/12th		Mahogany	
Explorer Goth	2 Open Coil HBs	Black	24.75"	1.68"	Set	Mahogany	Ebony/12th		Mahogany	
SG Goth	2 Open Coil HBs	Black	24.75"	1.68"	Set	Mahogany	Ebony/12th		Mahogany	



# attention

*more of the essential epiphone model electrics, basses and the new e-series guitars that take matters to the next level. featuring unique design variations, these special guitars and basses are built with painstaking attention to detail and set the standards for the care and quality that go into every epiphone guitar we build.*



**to detail**



# the electrics

*No other guitar line offers you more selection than Epiphone. We don't make a "new" guitar by just changing pickups. We design the guitar from the ground up with a specific look, feel, sound and style in mind. You need a guitar as unique as your own musical style. After all, how can you be different if you're the same?*



## G-1275 custom double neck

Authorized by Gibson USA

> Based on the model made famously by Jimmy Page, no other double neck looks like a G-1275 or plays like one!

## '63 firebird™ VII

Authorized by Gibson USA

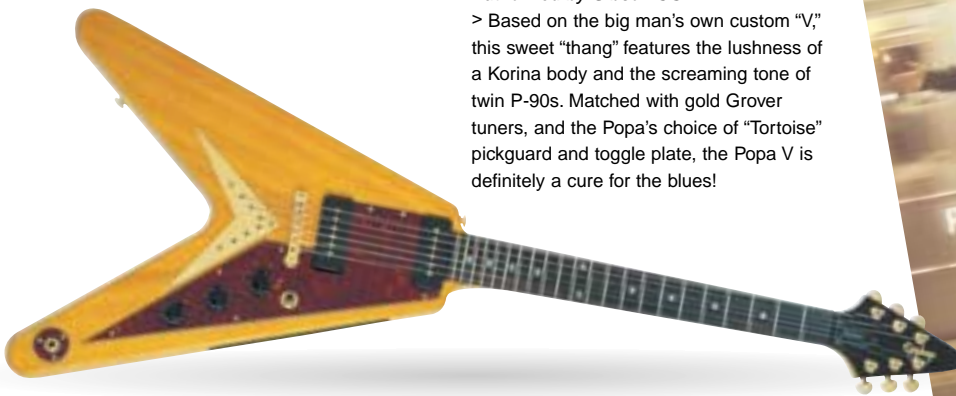
> Nothing looks like a Firebird and nothing ROCKS like this 3-pickup monster either! Based on the 1963 Gibson version, we've taken this baby to new sonic heights with individual volume controls for each Alnico-V equipped Mini-humbucker! The original-style Maestro tremelo adds versatility as well as a great vintage vibe!



## popa chubby flying V™

Authorized by Gibson USA

> Based on the big man's own custom "V," this sweet "thang" features the lushness of a Korina body and the screaming tone of twin P-90s. Matched with gold Grover tuners, and the Popa's choice of "Tortoise" pickguard and toggle plate, the Popa V is definitely a cure for the blues!



Model	Pickups	Hardware	Scale	Nut Width	Nck	Neck Mat.	FB / Inlay	Binding	Body Mat.	Top
G-1275 Custom (6-String)	2 Humbuckers	Chrome	24.75"	1.85"	Set	Mahogany	RW/Parall	N	Alder	Curly Maple Veneer
	2 Open Coil HBs	Chrome	24.75"	1.68"	Set	Mahogany	RW/Parall	N	Alder	Curly Maple Veneer
'63 Firebird-VII	3 Alnico-V Mini HB's	Gold	24.75"	1.68"	Set	Mahogany	RW/Block	N	Mahogany	
Popa Chubby Flying V	2 Black Soapbar P-90s	Gold	24.75"	1.68"	Set	Mahogany	RW/Dot		Korina	



## '58 korina flying V™

Authorized by Gibson USA

> Based on the Gibson '58 Flying V, its symmetrical "modernistic" design changed the look of rock and roll forever. The ultra-fast neck and upper fret access, offers any guitarist with fast hands and a flair for showmanship a must-have axe. Often imitated, but never duplicated... until now!



## '58 flying V™ (ebony only)

Authorized by Gibson USA

> Based on the Gibson '58 Flying V, its symmetrical "modernistic" design changed the look of rock and roll forever.



## '58 korina explorer™

Authorized by Gibson USA

> Based on Gibson's space age design introduced in 1958, this breathtaking guitar was way ahead of its time. Featuring two Humbuckers and Gold hardware, this axe looks as good as it sounds. Take one with you when you go exploring your musical universe!



## '58 explorer™ (ebony only)

Authorized by Gibson USA

> Based on Gibson's space age design introduced in 1958, this breathtaking guitar was way ahead of its time



Model	Pickups	Hardware	Scale	Nut Width	Nck	Neck Mat.	FB / Inlay	Binding	Body Mat.	Top	Also Available
'58 Korina Flying V	2 Humbuckers	Gold	24.75"	1.68"	Set	Mahogany	RW/Dot		Korina		
'58Flying V	2 Humbuckers	Gold	24.75"	1.68"	Set	Mahogany	RW/Dot		Mahogany/Alder		
'58 Korina Explorer	2 Humbuckers	Gold	24.75"	1.68"	Set	Mahogany	RW/Dot		Korina		
'58Explorer	2 Humbuckers	Gold	24.75"	1.68"	Set	Mahogany	RW/Dot		Mahogany/Alder		





### special™ II

> Our most popular model gives you all the essential elements of a Les Paul - powerful twin humbuckers combined with a stop-bar tailpiece and tune-o-matic bridge for killer tone and great sustain. All at a price that anyone can afford.



### special™ II (wine red)



### G-310

> All the style and sound of the venerable SG, but with a down to earth price!



### SG™ special

> Now... everyone can own the classic styling and killer performance of the SG with the new Epiphone SG Special - our most affordable SG guitar EVER! Features include 2 Epiphone open coil humbuckers, stopbar tailpiece with tune-o-matic bridge, Rosewood fingerboard and chrome hardware.

### fat-210

> We've taken this old dog and taught it some new tricks by adding a humbucker in the bridge position for improved rock "growl"!



Model	Pickups	Hardware	Scale	Nut Width	Nck	Neck Mat.	FB / Inlay	Binding	Body Mat.	Top	Also Available
Special-II	2 Open Coil HBs	Chrome	24.75"	1.68"	Bolt	Mahogany	RW/Dot		Lam. Alder/Maple		Left Handed
Special-II-Wine Red	2 Open Coil HBs	Black	24.75"	1.68"	Bolt	Mahogany	RW/Dot		Mahogany		
G-310	2 Open Coil HBs	Chrome	24.75"	1.68"	Bolt	Mahogany	RW/Dot		Alder		Left Handed/EB
SG Special	2 Epi Open Coil HBs	Chrome	24.75"	1.68"	Bolt	Maple	RW/Dots		Lam. Alder/Maple		
Fat-210	2 Single Coils/1 HB	Chrome	25.5"	1.68"	Bolt	Maple	Maple/Dot		Lam. Alder		



## G-400 deluxe flametop

Authorized by Gibson USA

> The SG is already one of the most distinctive looking guitars. Now... Epiphone has taken this classic body shape and added a premium Flame Maple top to create perhaps one of the most striking guitars available today! All the other features of the G-400 remain, including Alnico-V humbuckers, stopbar tailpiece with tune-o-matic bridge and an all Mahogany back for maximum sustain and great tone! The trademarked double-cutaway body and ultra-fast, slim-taper neck allow for blistering lead work all the way up the smooth Rosewood fingerboard.



## G-400 custom

Authorized by Gibson USA

> We've taken this 3-pickup monster and given it even more "bite" with individual bridge, middle and neck pickup volume controls to allow for infinite blending combinations!



## G-400

Authorized by Gibson USA

> This faithful reproduction of its desirable ancestor, the 1962 Gibson SG, possesses all the bite, tone and comfort, at a fraction of the cost!

Model	Pickups	Hardware	Scale	Nut Width	Nck	Neck Mat.	FB / Inlay	Binding	Body Mat.	Top	Also Available
G-400 Custom	3 Humbuckers	Gold	24.75"	1.68"	Set	Mahogany	RW/Block	N/H	Mahogany		
G-400 Deluxe Flame	2 Alnico V Humbuckers	Chrome	24.75"	1.68"	Set	Mahogany	RW/Trapezoid		Mahogany	Flame Maple	
G-400	2 Alnico V Humbuckers	Chrome	24.75"	1.68"	Set	Mahogany	RW/Trapezoid		Mahogany		





JC-LP Custom



"The Vinnie" LP Standard Bass



> John Connolly

> Vinnie Hornsby

> When John and Vinnie of Sevendust asked us to produce a couple of custom LP's based on the Epi's they were already playing, we were happy to oblige. What they came up with is as distinctive as their own personalities and signature sounds!

> John's JC-LP Custom is a combination LP Standard and LP Custom with a Maple fingerboard, topped off with a Flame Maple top, Flame graphic and black hardware! And he didn't stop there. He added a brass nut, Grover® machine heads and "Made in the USA" Humbuckers designed specifically for him, to get the exact sound and sustain he wanted. He loved the results and so did we!

> Not to be outdone, Vinnie asked for a Black Flame top Les Paul Standard bass with a Maple neck, Star fret markers and black hardware. And to power his baby he asked for a couple of active EMG® HB-slp bass pickups for their high output, clarity and thunderous lows. Totally fat!

> Now you can have the same guitars for yourself!

## SEVENDUST

Model	Pickups	Hardware	Scale	Nut Width	Nck	Neck Mat.	FB / Inlay	Binding	Body Mat.	Top
JC-LP Custom	USA-JC-HBB & HBN HBs	Black	24.75"	1.68"	Set	Mahogany	Maple/Block	B	Mahogany/Alder	Flame Maple
The Vinnie LP Stand Bass	2 EMG HB-SPL / Active	Black	34"	1.65"	Set	Maple	Maple/Stars	B	Alder	Flame Maple





*our tradition of innovation continues.  
introducing the epiphone e-series.  
these classic rock guitar shapes have been  
given a new twist, with styling and finish  
alterations like you've never seen, and the  
latest in high-performance electronics.*

## e-series

### pierced SG

> The SG has always been the axe of choice for those looking for drop-dead cool. Now, we've taken an already snarling beast and given it a darker side.

The twin E-Series humbuckers, super-fast neck and "devil ear" double-cut are still the mainstay. But, the body is "pierced" and finished in distressed flat black.

Plus we've added "X" fret markers and a "double-pierced" headstock. You've just got to see and hear this rock monster!

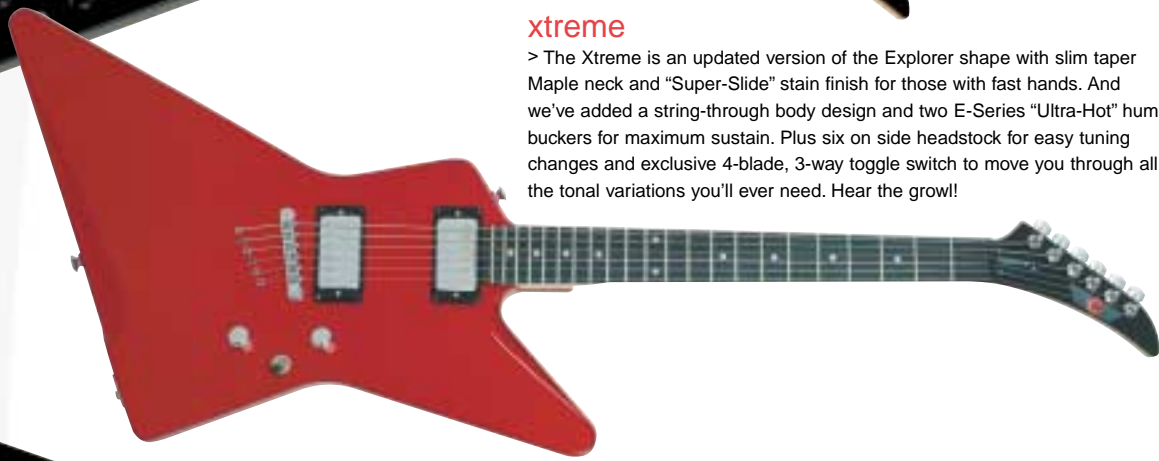






### demon

> The Demon is updated version of the V shape with slim taper Maple neck and "Super-Slide" stain finish for those with fast hands. And we've added a string-through body design and two E-Series "Ultra-Hot" humbuckers for maximum sustain. Plus six on side headstock for easy tuning changes and exclusive 4-blade, 3-way toggle switch to move you through all the tonal variations you'll ever need. A true rocker!



### xtreme

> The Xtreme is an updated version of the Explorer shape with slim taper Maple neck and "Super-Slide" stain finish for those with fast hands. And we've added a string-through body design and two E-Series "Ultra-Hot" humbuckers for maximum sustain. Plus six on side headstock for easy tuning changes and exclusive 4-blade, 3-way toggle switch to move you through all the tonal variations you'll ever need. Hear the growl!



### demon-FX

> The Demon-FX has all the features of the Demon, but with two vintage analog effects with true bypass switching to avoid "tone-sucking" when not in use. The Chorus effect uses an IC known as a Bucket Brigade device used in the most sought after classic analog choruses. The Distortion effect provides classic distortion from a blues clip to full-on overdrive with the turn of a Gain knob.



### xtreme-FX

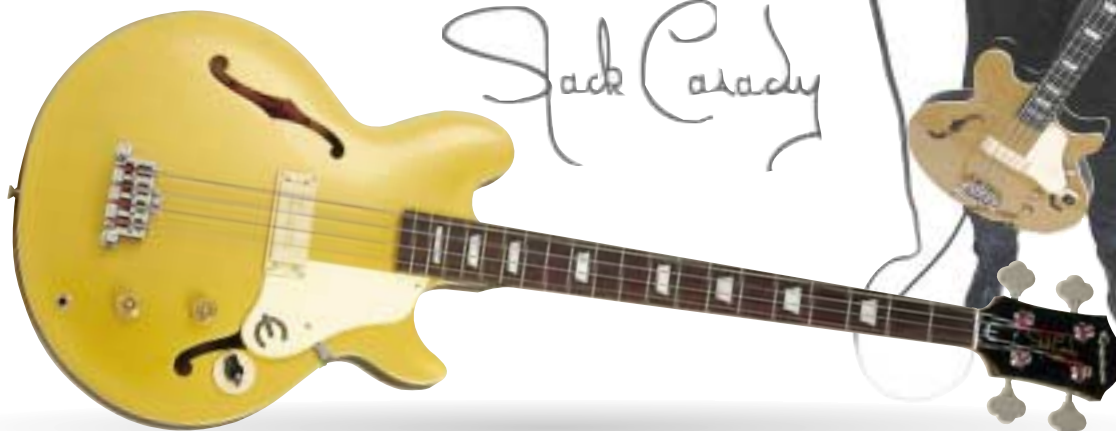
> The Xtreme-FX has all the features of the Xtreme, but with two vintage analog effects with true bypass switching to avoid "tone-sucking" when not in use. The Chorus effect uses an IC known as a Bucket Brigade device used in the most sought after classic analog choruses. The Distortion effect provides classic distortion from a blues clip to full-on overdrive with the turn of a Gain knob. Yet another example of Epiphone innovation.

Model	Pickups	Hardware	Scale	Nut Width	Nck	Neck Mat.	FB / Inlay	Binding	Body Mat.	Includes
Demon-FX	2 E-Series Humbuckers	Chrome	24.75"	1.68"	Bolt	Maple	RW/Dot		Lam. Alder/Maple	Onboard Effects
Xtreme-FX	2 E-Series Humbuckers	Chrome	24.75"	1.68"	Bolt	Maple	RW/Dot		Lam. Alder/Maple	Onboard Effects
Demon	2 E-Series Humbuckers	Chrome	24.75"	1.68"	Bolt	Maple	RW/Dot		Lam. Alder/Maple	
Xtreme	2 E-Series Humbuckers	Chrome	24.75"	1.68"	Bolt	Maple	RW/Dot		Lam. Alder/Maple	
Pierced SG	2 E-Series Open Coil HBs	Black	24.75"	1.68"	Bolt	Maple	RW/Xx		Lam. Alder/Maple	Headstock Rings



# the basses

*Why should guitar players have all the fun. At Epiphone, we offer a complete line of basses with your individual style in mind. From classic Thunderbirds to the new Flying V Bass, from the vintage Viola to the awesome Jack Casady - we've got a bass just for you!*



## jack casady signature bass

> Finally! A long-scale, semi-acoustic electric bass with tone so "pure" that we dare you to compare it to any other bass! At the heart of this break-through design is the new, low impedance JCB-1 pickup capable of producing a "natural" bass tone that cannot be achieved using normal high-impedance pickups and active electronics.



## viola™ bass

> From the golden age of British music, comes the bass that looks as good as it sounds!



## thunderbird™ IV bass

Authorized by Gibson USA

> Gibson's most distinctive bass features the "reverse" body styling and dual humbuckers!

Model	Pickups	Hardware	Scale	Nut Width	Nck	Neck Mat.	FB / Inlay	Binding	Body Mat.	Top	Also Available
Jack Casady Bass	1 JCB-1 Low Imp. HB	Chrome	34"	1.625"	Set	Mahogany	RW/Trapezoid	B	Lam. Maple	Lam. Maple	
Viola Bass	2 Mini Humbuckers	Chrome	30.5"	1.65"	Set	Maple	RW/Dot	B/H	Lam. Maple	Flame Maple	
Thunderbird IV Bass	2 Humbuckers	Black	34"	1.73"	Bolt	Maple	RW/Dot		Alder		





### les paul® standard bass

Authorized by Gibson USA

Based on Gibson's venerable model, this long scale bass features a set neck, dual bass humbuckers and 3-point bridge.



### les paul® special bass

Authorized by Gibson USA

Like our Standard bass but with a bolt neck and black hardware.



### '58 flying V™ bass

Why should guitar players have all the fun? A lightweight Korina wood body and set neck, combine with high-output humbuckers for unsurpassed power, sustain and tone with NO noise!

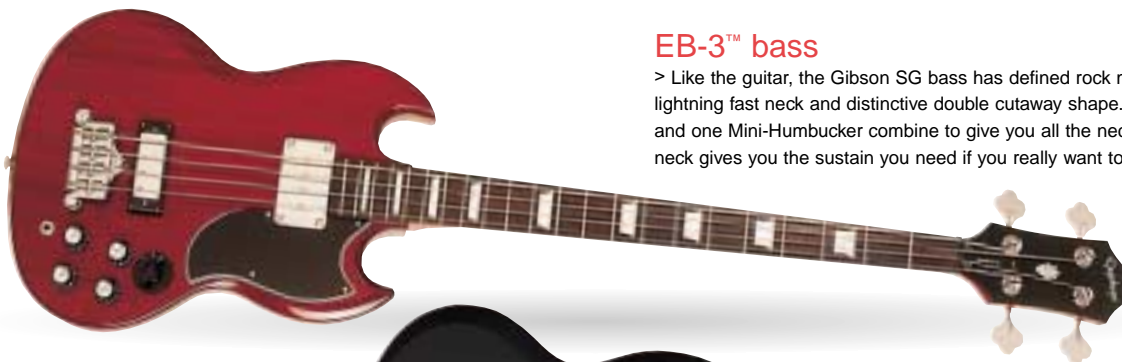


### explorer™ bass

After the '58 V Bass, we just had to introduce the same setup with the famous shape of the Explorer... Rock AND Roll!

Model	Pickups	Hardware	Scale	Nut Width	Nck	Neck Mat.	FB / Inlay	Binding	Body Mat.	Top	Also Available
Les Paul Standard	2 Humbuckers	Chrome	34"	1.65"	Set	Maple	RW/Trapezoid	B	Alder	Flame Maple	
Les Paul Special Bass	2 Humbuckers	Black	34"	1.65"	Set	Maple	RW/Trapezoid	B	Alder	Flame Maple	
Explorer Bass	2 Humbuckers	Gold	34"	1.65"	Set	Mahogany	RW/Dot		Korina		
'58 Flying V Bass	2 Humbuckers	Gold	30.5"	1.65"	Set	Maple	RW/Dot		Korina		





### EB-3™ bass

> Like the guitar, the Gibson SG bass has defined rock music with it's ultra-thin body, lightning fast neck and distinctive double cutaway shape. One Sidewinder humbucker and one Mini-Humbucker combine to give you all the necessary tones while the set neck gives you the sustain you need if you really want to rock!

### EB-O™ bass

Authorized by Gibson USA

> Like the one pickup original at a price you gotta love! Plus... the short-scale and narrow neck make it soooo easy to play!



### accu-bass

> We've taken this bass to the next level by adding an angled headstock and individual brass saddles for improved sustain and better tone. One split humbucker gives you noise-free operation.

### el capitan-4C

> With it's J-200 size body, Maple top, back and sides and oval sound hole it's no wonder this acoustic/electric bass sets the standard for all to follow. With the Epiphonic-Six preamp/EQ with Low and Hi-Z outputs, you get powerful tones "unplugged" or "plugged".



### el segundo

> As the name implies, this is the "El Segundo" (*the second*) acoustic/electric bass in the Epiphone line-up of hits. Like the best-selling El Capitan, it features great acoustic tone and the Epiphonic-Six preamp with Shadow piezo. But... at a price that is sure to turn your head! Wow! How do we do it?

Model	Pickups	Hardware	Scale	Nut Width	Nck	Neck Mat.	FB / Inlay	Binding	Body Mat.	Top	Also Available
EB-3 Bass	1 Sidwnder HB / 1 MINI HB	Chrome	34"	1.65"	Set	Mahogany	RW/Dot		Mahogany		
EB-O Bass	1 Sidewinder HB	Chrome	30.5"	1.5"	Bolt	Mahogany	RW/Dot		Mahogany		
Accu-Bass	1 Split HB	Chrome	34"	1.65"	Bolt	Maple	RW/Dot		Maple/Alder		Left-Handed
El Capitan 4C	Piezo/Epiphonic-Six	Chrome	34"	1.73"	Set	Maple	RW/Dot	B/N/H	Maple	Maple	
El Segundo Bass	Piezo/ Epiphonic-Six	Chrome	34"	1.65"	Set	Maple	RW/Dot	B	Mahogany	Select Spruce	







voices from black-holed mouths  
telling tales in phrase space  
resonates into shadowy form  
steel vibrations hang in the air  
following chapter with chapter  
tear out the last page let the  
story never end



# the acoustics

*Every Epiphone acoustic guitar is designed with the acoustic guitar player in mind. We use only the finest materials and carefully craft each one. Our unique "slim-taper" neck allows fast, easy fingering and hours of playing comfort. And, our original body designs offer you a look that will set you apart from the rest of the crowd.*



## EJ-200

Authorized by Gibson USA

> No other acoustic is as recognizable as the original Super Jumbo - the Gibson J-200.

Also available as Electric Cutaway (EJ-200CE)

## texan

> Originally used by Paul McCartney to record "Yesterday", this Advanced Jumbo has a string of credits dating back to the early '60s.



## hummingbird

Authorized by Gibson USA

> That says it all! Solid Spruce top and Mahogany back and sides combine for warm acoustic tone!

## dove

Authorized by Gibson USA

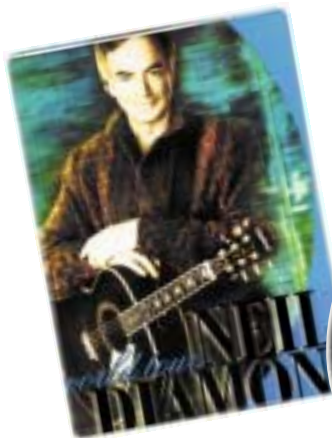
> Like the Hummingbird, this baby really sings with a Solid Spruce top but with Maple back and sides for added "punch"!



Model	Pickups	Hardware	Scale	Nut Width	Nck	Neck Mat.	FB / Inlay	Binding	Body Mat.	Top	Also Available
EJ-200		Gold	25.5"	1.68"	Set	Maple	RW/Crown	B/N/H	Maple	Select Spruce	Electric Cutaway
Texan		Chrome	25.5"	1.725"	Set	Mahogany	RW/Parallelogram	B	Flame Maple	Solid Spruce	
Hummingbird		Chrome	24.75"	1.68"	Set	Mahogany	RW/Split Parall	B/N	Mahogany	Solid Spruce	
Dove		Chrome	24.75"	1.68"	Set	Maple	RW/Split Parall	B/N	Maple	Solid Spruce	







### neil diamond signature SQ-180

> On his 1998 World Tour, hundreds of thousands of people saw the legendary Neil Diamond performing with a custom-made Epiphone "Neil Diamond" Signature SQ-180 guitar. In addition to his many live performances, this guitar was featured prominently on the front and back cover of his 1998 World Tour program. At your request and as a result of this tremendous exposure, we are very pleased to announce the availability of this Limited Edition acoustic guitar. *Black Metallic (BM)*



### don everly SQ-180

*Authorized by Gibson USA*

> Just like Don, here's a real original featuring the one-of-a-kind moustache pickguards, star inlays, 24.75" scale length and narrow neck.

### EL-00

*Authorized by Gibson USA*

> Our latest is a great looking Gibson based, small 00 size acoustic with Mahogany body and Solid Spruce top for that fabulous "vintage" tone. Simple and elegant, for the "parlor" or the studio, you can't go wrong with this Epiphone!



### AJ-45S

*Authorized by Gibson USA*

> Based upon the Gibson J-45, this Solid Spruce top, Advanced Jumbo features a short-scale (24.75") for that classic "blues" sound and feel. "Kluson" style machine heads and "Tortoise" colored pickguard round out the vintage vibe.

Model	Pickups	Hardware	Scale	Nut Width	Nck	Neck Mat.	FB / Inlay	Binding	Body Mat.	Top	Also Available
AJ-45S		Chrome	24.75"	1.68"	Set	Mahogany	RW/Dot	B	Mahogany	Solid Spruce	
Neil Diamond SQ-180		Gold	24.75"	1.65"	Set	Mahogany	RW/Diamonds	B/N	Maple	Select Spruce	
Don Everly SQ-180		Chrome	24.75"	1.65"	Set	Mahogany	RW/Stars	B/N	Maple	Select Spruce	
EL-00		Chrome	24.75"	1.65"	Set	Mahogany	RW/Dot	B	Mahogany	Solid Spruce	



## AJ-28S

> What a value! Solid spruce top with scalloped bracing, binding on the body, neck and headstock, and Mahogany back, sides and neck. Incredible AJ sound and beauty at a price that is too good to be true!

*Also available as Electric 12 String (AJ-2812SE)*



## AJ-18S

> If you're looking for a great all-purpose acoustic/electric cutaway at a price that won't break your budget, this is it. The AJ-18S features a Solid Spruce top, Mahogany back and sides along with the distinctive reverse belly bridge round out the package. *Also available as a 12 String, Lefty 12 String*



## AJ-15

> Features Select Spruce top, Mahogany back, sides and neck, reverse-belly Rosewood bridge and a Rosewood fingerboard, giving you professional features at a price anyone can afford!

*Also available with electronics (AJ-15E)*



## AJ-10

> The new affordable AJ-10 now brings the look and sound of the AJ to everyone with features such as a Select Spruce top, Mahogany back and sides and a rosewood fingerboard and bridge. See and hear for yourself... the difference is as clear as a bell!

*Also available as Electric Cutaway (AJ-10CE)*



Model	Pickups	Hardware	Scale	Nut Width	Nck	Neck Mat.	FB / Inlay	Binding	Body Mat.	Top	Also Available
AJ-28S		Chrome	25.5"	1.68"	Set	Mahogany	RW/Dot	B/N/H	Mahogany	Solid Spruce	12 String
AJ-18S		Gold	25.5"	1.68"	Set	Mahogany	RW/Diamond	B/N	Mahogany	Solid Spruce	Electric Cutaway
AJ-15		Chrome	25.5"	1.68"	Set	Mahogany	RW/Dot	B	Mahogany	Select Spruce	Electric / Lefty
AJ-10		Chrome	25.5"	1.68"	Set	Mahogany	RW/Dot	B	Mahogany	Select Spruce	Electric Cutaway



## SJ-18S

> Since its introduction in 1937, the Gibson original Super Jumbo (SJ™) body shape has set the acoustic standard for outstanding bass response and overall sound projection. The unique SJ shape, which is significantly larger than an ordinary dreadnought, produces powerful lows and warm highs. Epiphone presents the SJ-18S, the first affordable Solid top Super Jumbo acoustic.



## SJ-15

> Until now, you had to pay a lot of money to enjoy the classic look and sound of a Super Jumbo acoustic. But the rules have changed! The new SJ-15 features a SJ body of Mahogany and a Select Spruce top for outstanding projection and great low-end response.

## PR-200

> All the features you need in a “no-frills” acoustic! Rosewood fingerboard and bridge, Select Spruce top and Mahogany back and sides.



## PR-100

> Our most popular acoustic, the PR-100 features a Select Spruce top, Mahogany back and sides and a Rosewood fingerboard and bridge.

*Also available as 12 String (PR-100-12)*

Model	Pickups	Hardware	Scale	Nut Width	Nck	Neck Mat.	FB / Inlay	Binding	Body Mat.	Top	Also Available
SJ-18S		Gold	25.5"	1.68"	Set	Mahogany	RW/Split Dimnd	B/N	Mahogany	Solid Spruce	Electric Cutaway
SJ-15		Chrome	25.5"	1.68"	Set	Mahogany	RW/Dot	B	Mahogany	Select Spruce	
PR-200		Chrome	25.5"	1.68"	Set	Mahogany	RW/Dot	B	Mahogany	Spruce/Cedar	
PR-100		Chrome	25.5"	1.68"	Set	Mahogany	RW/Dot	B	Mahogany	Select Spruce	12 String



## PR-350S

> A Solid Spruce top dreadnought at a price you can afford. Also featuring die-cast machine heads for great tuning stability. Also available as Left-Hand, Electric Cutaway (PR-350CE) and 12 String (PR-350-12)



## AJ-2812-SE

> What a value! Solid Spruce top with scalloped bracing, 16:1 ratio Gotoh machine heads, binding on the body, neck and headstock, and Mahogany back, sides and neck. Incredible AJ sound and beauty at a price that is too good to be true. Plus... the Epiphonic-Six preamp/EQ or just acoustic (AJ-28S).

## PR-100-12

> Presenting our most affordable 12-string, the PR-100-12. Featuring the same Select Spruce top, Mahogany back and sides and Rosewood fingerboard as our popular acoustic, the PR-100.



Model	Pickups	Hardware	Scale	Nut Width	Nck	Neck Mat.	FB / Inlay	Binding	Body Mat.	Top	Also Available
PR-350S		Chrome	25.5"	1.68"	Set	Mahogany	RW/Split Dimnd	B	Mahogany	Solid Spruce	Lefty, PR-350CE, PR-350-12
PR-100-12		Chrome	25.5"	1.85"	Set	Mahogany	RW/Dot	B	Mahogany	Select Spruce	PR-100
AJ-2812-SE	Piezo/Epi-Six	Chrome	25.5"	1.68"	Set	Mahogany	RW/Dot	B/N	Mahogany	Solid Spruce	AJ-28 Left-handed



# the acoustic/electrics



*Jeff "Skunk" Baxter*

*For years, Epiphone and Electar labs have been working together to create the ultimate on-board acoustic guitar preamp system. This effort has resulted in a new "family" of preamp systems - each sharing the same innovative technology combined with individually unique features.*

## jeff "skunk" baxter

> Former axe-man with Steely Dan and the Doobie Brothers as well as a renown session guitarist, composer and producer puts his name on this acoustic/electric because he wants to. Need we say more!



## john lennon EJ-160E

*Authorized by Gibson USA*  
> The acoustic/electric that is synonymous with John Lennon, features the same shape and feel as the Gibson... Fab-ulous!

*John Lennon*



## AJ-30CE

> If you're looking for an all around great acoustic that can also go acoustic/electric, this is the AJ for you! A full-depth Mahogany body with Spruce top and scalloped bracing gives it powerful tone while the new Epiphonic-Six with Chorus makes it a performer's dream!

Model	Pickups	Hardware	Scale	Nut Width	Nck	Neck Mat.	FB / Inlay	Binding	Body Mat.	Top	Also Available
Jeff "Skunk" Baxter	Piezo/Epi-Six	Gold	25.5"	1.68"	Set	Mahogany	RW/Split Diamond	B/N/H	Mahogany	Select Spruce	
John Lennon EJ-160E	1 Mini HB	Chrome	25.5"	1.725"	Set	Mahogany	RW/Trapezoid	B	Mahogany	Solid Spruce	
AJ-30CE	Piezo/Epi-Six Chorus	Chrome	25.5"	1.68"	Set	Mahogany	RW/Dot	B	Mahogany	Select Spruce	





### AJ-18SCE

> If you're looking for a great all-purpose acoustic/electric cutaway at a price that won't break your budget, this is it. The AJ-18SCE features a solid spruce top and the incredible Epiphonic-Six preamp/EQ. Mahogany back and sides along with the distinctive reverse belly bridge round out the package. *Also available without cutaway and electronics (AJ-18S).*



### AJ-40TLC

> This "Thin Line Cutaway" AJ was designed with the performing acoustic/electric musician in mind. It's thin body makes it comfortable to play all night long, while the Epiphonic-2000 preamp with presets makes finding your sound as easy as pushing a button. Abalone surrounding the soundhole and body make it look as good as it sounds!



*Chet Atkins C.E.P.*



### chet atkins SST

*Authorized by Gibson USA*  
 > Chet Atkins and Gibson created the FIRST Solid-body acoustic. Then... Epiphone and Chet made it affordable. Computer designed body cavities give it great acoustic properties while the piezo system and new active electronics give it even string-to-string response with enough punch to cut-through any mix.

Model	Pickups	Hardware	Scale	Nut Width	Nck	Neck Mat.	FB / Inlay	Binding	Body Mat.	Top	Also Available
AJ-18SCE	Piezo/Epi-Six	Gold	25.5"	1.68"	Set	Mahogany	RW/Dot	B/N	Mahogany	Solid Spruce	AJ-18S
AJ-40TLC	Piezo/Epi-Six	Gold	25.5"	1.68"	Set	Mahogany	RW/Dot	B	Mahogany	Select Spruce	
Chet Atkins SST	Piezo/Tone,Volume	Gold	24.75"	1.68"	Set	Mahogany	RW/Dot	B	Mahogany	Maple	



## PR-7E

> One of our most distinctive thin-body acoustic/electrics with Birdseye Maple top and slim-taper neck. It also features the Epiphonic 2000 as standard equipment.



## PR-5E

> For years, the PR-5E has taken the stage with a countless number of musicians. Try one and find out why its timeless beauty and great acoustic/electric sound with our Epiphonic-Six preamp system have withstood the test of time!

*Also available Left-Handed*

## PR-350CE

> Great value in an acoustic/electric cutaway. And... with the Epiphonic-Six preamp system, you can't go wrong!



## SJ-18SCE

> Presenting the first affordable Solid top, cutaway electric, Super Jumbo acoustic. The SJ-18SCE features Mahogany back and sides, Solid Spruce top and the Epiphonic Six preamp system.

Model	Pickups	Hardware	Scale	Nut Width	Nck	Neck Mat.	FB / Inlay	Binding	Body Mat.	Top	Also Available
PR-7E	Piezo/Epi-2000	Gold	25.5"	1.68"	Set	Mahogany	RW/Split Dimnd	B/N	Birdseye Maple	Birdseye Maple	
PR-5E	Piezo/Epi-Six	Chrome	25.5"	1.68"	Set	Mahogany	RW/Split Dimnd	B/N	Mahogany	Select Spruce	Left-Handed
PR-350CE	Piezo/Epi-Six	Chrome	25.5"	1.68"	Set	Mahogany	RW/Split Dimnd	B	Mahogany	Select Spruce	
SJ-18SCE	Piezo/Epi-Six Chorus	Gold	25.5"	1.68	Set	Mahogany	RW/Split Dimnd	B/N	Mahogany	Solid Spruce	



# classicals



## chet atkins CE

> When Chet Atkins put his name on an instrument, you know it had to be good! Similar to the Chet SST in construction, this Solid-body acoustic features active electronics and lets you "plug in" without feedback.

## valencia CE

> The same great features of the Granada except with a cutaway and the Epiphonic-Six preamp/EQ with Lo and Hi-Z outputs. Acoustic or acoustic/electric, this guitar sounds fabulous!  
*Also available Left-Handed*



## C-40

> Mahogany back and sides with a Select Cedar top make this classical sing! Gold hardware on its Rosewood faced headstock and a wood mosaic rosette add a touch of class to this affordable guitar!

## C-10

> If you're looking for an entry-level classical with good action and good tone, look no further. The C-10 from Epiphone has what you want!



Model	Pickups	Hardware	Scale	Nut Width	Nck	Neck Mat.	FB / Inlay	Binding	Body Mat.	Top	Also Available
Chet Atkins CE	Piezo/1 Tone, 1 Vol	Gold	25.5"	1.75"	Set	Mahogany	RW/None	B	Mahogany	Select Spruce	
Valencia CE	Piezo / Epi-Six	Gold	25.5"	2.0"	Set	Mahogany	RW/None	B	Mahogany	Select Spruce	Left-Handed
C-40		Gold	25.5"	2.0"	Set	Mahogany	RW/None	B	Mahogany	Select Cedar	
C-10		Chrome	25.5"	2.0"	Set	Mahogany	RW/None	B	Mahogany	Select Spruce	





# bluegrass



## biscuit (Round Neck)

> With its traditional "biscuit" in the center of the resonator and round-neck, this resophonic monster works as well for bluegrass as it does for the blues. With slide or fingers, the Biscuit COOKS!



## MB-250

> With its roots in the Masterbuilt banjos, this professional instrument has all the great construction features you'd expect from Epiphone.



## MB-200

> This economical sibling to the MB-250 is a great banjo to start your way towards bluegrass excellence.

Model	Pickups	Hardware	Scale	Nut Width	Nck	Neck Mat.	FB / Inlay	Binding	Body Mat.	Top	Also Available
Biscuit		Chrome	24.75"	1.62"	Set	Mahogany	RW/Dot	B	Mahogany	Mahogany/Spruce	
MB-250		Chrome	26.25"	1.25"	Bolt	Mahogany	RW/Heart	B/N	Maple	US Remo Head	
MB-200		Chrome	26.25"	1.25"	Bolt	Mahogany	RW/	B/N	Mahogany	US Remo Head	



# bluegrass

## mandobird

> Just in case you wanted something a little different... We've got a crossover mando for those who like to cut across the grain!

The new MandoBird is a new twist to a classic Gibson shape, the Firebird! With our custom MandoBird humbucking pickup and Mini Grover™ tuners, this little 4-String can do it all, performing equally well in traditional mandolin tuning or tuned low for jazzier "swing"! (Comes with Case)



## MM-50

> The Gibson F-5 mandolin is the essential "f" style mandolin. Our MM-50 captures all these features including Solid Spruce top with Maple back, top and neck at an Epiphone price. Multi binding on the neck, body and headstock, gold hardware, mother of pearl inlays, and a rosewood bridge complete the tradition.

## MM-30

> If you're looking for a great "A" style mandolin with professional features such as a Solid Spruce top with Mahogany back and sides, look no further!



## MM-20

> Just like the MM-30 except with Select Spruce top and chrome hardware. A real solid mandolin at a great price!

Model	Pickups	Hardware	Scale	Nut Width	Nck	Neck Mat.	FB / Inlay	Binding	Body Mat.	Top	Also Available
MandoBird	Humbucker	Chrome	14"	1.06"	Bolt	Nato	RW/Dot		Nato		Comes with Case
MM-50		Gold	14"	1.06"	Set	Maple	RW/	B/N/H	Mahogany	Solid Spruce	
MM-30		Gold	14"	1.06"	Set	Mahogany	RW/Dot	B/N	Mahogany	Solid Spruce	
MM-20		Chrome	14"	1.06"	Set	Mahogany	RW/Dot	B/N	Mahogany	Select Spruce	



# studio amplifiers

*Our Studio Amplifiers are small amplifiers, designed to ROCK! We've voiced them specifically for heavier guitar and bass licks. The Studio 10 has an amazing amount of "crunch" PLUS a boost switch for even more! The Studio Bass 10's closed back cabinet and presence control allows you to get great rock bass tone - even from a small speaker. And... when you're ready to take your sound on the road, the Studio Mini gives you the freedom to do so!*



## galaxie 10

10 Watt All-Tube Guitar Amplifier (12AX7, 6L6 Tubes)  
True Class A vacuum tube circuitry • 3-Band EQ  
Master Volume Control • Gain Control • Stand-By Switch  
10" Celestion Tube 10 Speaker • Black Tolex Cover  
Switchable 115 / 230 Voltage Selector  
Also available Galaxie 20



## Studio 10

10 Watt Electric Guitar Amplifier  
3-Band EQ • Gain Control • Boost Switch  
Master Volume Control • Headphone Output  
8" Electar Labs Speaker • Closed -Back Cabinet  
Black Tolex Cover



## Studio Bass 10

10 Watt Electric Bass Guitar Amplifier • 3-Band EQ  
Master Volume Control • Presence Control  
Headphone Output • 8" Electar Labs Speaker  
Closed -Back Cabinet • Black Tolex Cover



## Studio Mini

> 1 Watt Electric Guitar Mini-Amplifier  
Volume & Treble Controls • Clean &  
Overdrive Mode • 1/4" Headphone Output  
DC 9V Input Jack • Shoulder Strap



# EP amplifiers

*A traditional best seller for years, the EP-Series offers you a wide range of choices - all with reliable, transistor-based circuitry and Electar Labs Speakers. If you want a great sounding amp at a great price, the EP-Series is for you!*



## EP-800R

15 Watt Guitar Amplifier • 3-Band EQ  
Master Volume Control • Gain Control • Spring  
Reverb with Depth Control • Headphone Jack  
Black Tolex Cover • Exclusive E-Series circuitry  
for smooth tube-like distortion



## EP-1000R

25 Watt Guitar Amplifier • 2 Channels - Overdrive  
and Clean • 3-Band EQ • Master Volume Control  
Gain Control • Spring Reverb with Depth Control  
Footswitch jack for channel select • Headphone Jack  
Black Tolex Cover • Exclusive E-Series circuitry  
for smooth tube-like distortion



## EP-1000B

25 Watt Bass Guitar Amplifier  
4-Band EQ • Master Volume Control • Gain Control  
Headphone Jack • Rugged Cabinet Construction  
Black Tolex Cover • Special Design E-Series Speaker  
for added Bass Response



## EP-SC210

2 x 30 Watt Guitar Amplifier • 2 Channels - Overdrive and Clean • 3-Band EQ  
Master Volume Control • Presence Control • Separate Left and Right Outputs  
for Direct Recording or Mixer Interface • Spring Reverb with Depth Control  
Footswitch jack for Chorus On/Off and Channel Select • Headphone Jack  
True Stereo Chorus with Rate and Depth Controls • Effects Loop  
Black Tolex Cover • Exclusive E-Series circuitry for smooth tube-like distortion



# acoustic regent amplifiers

*The secret behind the real acoustic sound of the Acoustic Regent Series amplifiers is in the speakers. Multiple Electar Labs speakers in combination with state-of-the-art circuitry creates tonal characteristics perfectly tuned for acoustic guitar frequencies and harmonics. A 3-band EQ, anti-feedback, reverb and independent channel controls with separate M1 C inputs and you've got an easy-to-use, portable acoustic amplification system!*



## acoustic regent 230

2 x 30 Watt Acoustic Guitar & Vocal Amplifier • 3-Band EQ  
Anti-Feedback Control System • On-Board Reverb • XLR Mic, 1/4" Hi  
& Lo Inputs • 2-Channel Volume Controls • Footswitch Jack for Chorus On/Off  
External Speaker Output • 1 - 10" & 4 - 5" Electar Labs Speakers  
Cream Tolex® Closed-Back Cabinet



## acoustic regent 220

2 x 30 Watt Acoustic Guitar & Vocal Amplifier • 3-Band EQ  
Anti-Feedback Control System • XLR Mic, 1/4" Hi & Lo Inputs  
Footswitch Jack for Chorus On/Off • 2-Channel Volume Controls  
On-Board Reverb • External Speaker Output • 1 - 8" & 2 - 5" Electar Labs Speakers  
Cream Tolex® Closed-Back Cabinet



## acoustic regent 30

30 Watt Acoustic Guitar & Vocal Amp • 3-Band EQ • On-Board Reverb  
XLR Mic, 1/4" Hi & Lo Inputs • 2-Channel Volume Controls  
Headphone Jack • 4-5" Electar™ Speakers • Cream Tolex® Closed-Back Cabinet



# packages & accessories



## ear plug personal headphone amplifier

> Plug it in, and listen to your guitar in private.  
Clean or mean!



## basher & bully player packs

> Just the guitar packages that you've always wanted... and always needed. The Epiphone Player Packs feature the Basher (LP) or Bully (SG) solid body electric guitars, with two humbucking pickups, tune-o-matic bridge and stopbar tailpiece. Plus you get a screaming Studio 10 amplifier with 3-band EQ, Gain control, Headphone jack and built-in Prop stand. They also come with GigBag, Tuner, Strap, Cord, Picks and an Instructional Video. These Packs have everything you need!

Also available with

- Special II
- SG Special
- AccuBass Jr.
- C-10 Classical
- AJ-10 Acoustic
- PR-100 Acoustic





### les paul® peewee & flying veevee raverigs

> Not just a travel guitar, these ultimate party packs includes a mini electric guitar with full size neck width and Humbucking pickup. The 9-volt, battery powered amp, strap, cord and guitar all fit in the gigbag. get ready to rock... anywhere!

### high quality cases & gigbags

> Our cases and gigbags are design specifically to fit Epiphone models and provide top quality protection for your investment.



### EZ-bender

> This patented detachable string-bender can be installed on any guitar equipped with a StopBar tailpiece and tune-o-matic bridge with NO modifications at all. Just follow the easy installation instructions on the FREE video (NTSC format only), and you'll be set up to play in no time! Then, check out some expert instructional lessons from Nashville session man, Dan Schafer and pretty soon you'll be bending your life away!



100% Inspected & Set-Up in the USA by **23** €

**Every Epiphone guitar** is designed and built for one purpose: to be played. Night after night, gig after gig, rehearsal after rehearsal. And the commitment to making a player's guitar is with us every step of the way. From the time our designers first put pen to paper, to the arrival of our selections of wood at our dedicated factories overseas, to the time each finished guitar leaves the inspection team at our headquarters in Nashville, every last detail has been checked and rechecked to ensure it all meets the needs and expectations of working musicians.

And all Epiphone Set-up Technicians must be musicians. They must be experienced players with thorough knowledge of not only how to set up a guitar, but how to repair one as well. Before any Epiphone guitar is shipped to a retailer, it first must pass through the hands of a Set-up Technician who will go over every inch of it as part of a seventeen-point inspection process. They check each guitar's finish and look for flaws, test all its electronics to ensure they are in perfect working order and make any and all necessary adjustments to the truss rod, action and intonation. Finally, the Set-up Technician plays the guitar to make sure it feels and sounds like a great guitar should. The decision to deem a guitar worthy of passing inspection is not taken lightly, as each technician must put his own, individual stamp of approval on each guitar. If any problems are found after a guitar leaves our Nashville headquarters, it goes right back to the Set-up Technician who originally inspected it to make any repairs or adjustments.

This is what an Epiphone guitar goes through before it reaches a music store. This is how you know an Epiphone is ready to take as much as you can give it before you ever pull it down off the wall to try it out. An Epiphone is designed for musicians, by musicians. And tested by players who know what it means to have an instrument you can count on to practice, perform and record as much as you want to. Because as much as we know about building a great guitar, we know how it feels to play one, too.



2.0mm

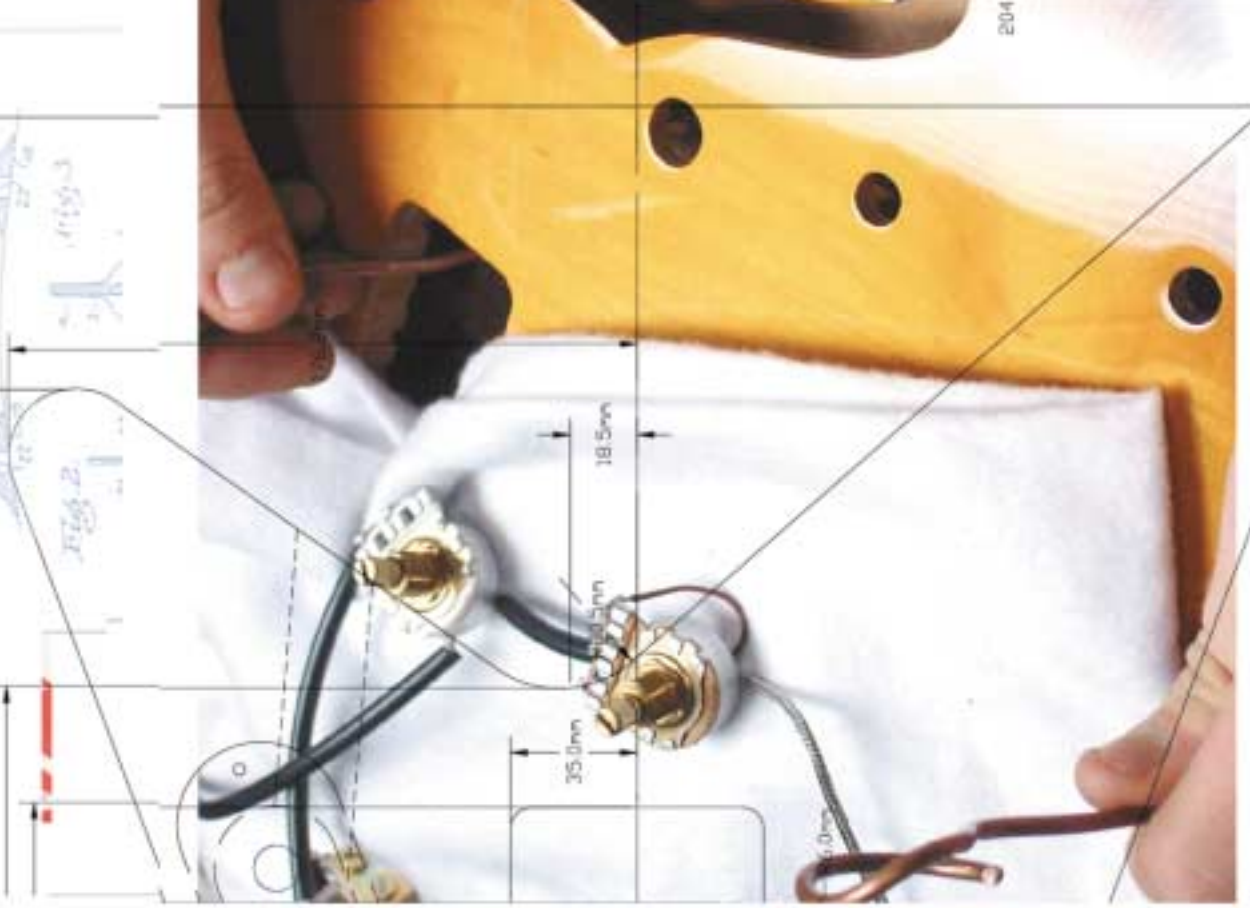


- #1 INSPECT FINISH/HARDWARE
- #2 CHECK CONTROLS
- #3 INSPECT/CHANGE STRINGS
- #4 TUNE GUITAR
- #5 CHECK/ADJUST TRUSS ROD
- #6 CHECK/SET ACTION --- 12TH FRET
- #7 CHECK/SET ACTION --- 1ST FRET



7.5 1104  
6.4 1112  
5.2  
2.1





E NAME THAT IS A



Model BROADWAY NA  
 Number R99F 0821 is hereby  
**GUARANTEED**  
 against faulty workmanship and materials.  
*Epiphone*



LE E2307D  
 HOME CASINO  
 529202



E



Antique Ivory  
(AI)



Antique Natural  
(AN)



Antique Sunburst  
(AS)



Alpine White  
(AW)



Black  
(BK)



Blue  
(BL)



Black Metallic  
(BM)



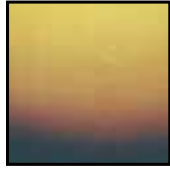
Brown  
(BR)



Cherry  
(CH)



Ebony  
(EB)



Honey Burst  
(HB)



Heritage Cherry  
Sunburst (HS)



Korina  
(KO)



Metallic  
Gold (MG)



Metallic Light  
Blue (ML)



Red Brown  
Mahogany (MR)



Natural  
(NA)



Lennon Natural  
(LN)



Natural Satin  
(NS)



Plain Black  
(PB)



Red  
(RE)



Red Metallic  
(RM)



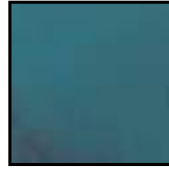
Trans Amber  
(TA)



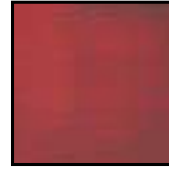
Trans Black  
(TB)



Trans Green  
(TG)



Trans  
Blue (TL)



Trans  
Red (TR)



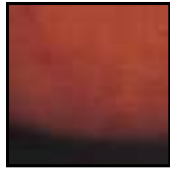
Turquoise  
(TQ)



Union Jack  
(UJ)



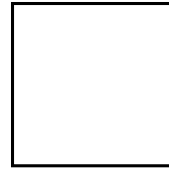
Vintage  
Cherry (VC)



Vintage  
Sunburst (VS)



Vintage White  
(VW)



White  
(WH)



Wine Red  
(WR)

**the epiphone company**  
a division of gibson musical instruments

To see the full line of 2002 Epiphone guitars and accessories,  
visit your authorized Epiphone dealer or [epiphone.com](http://epiphone.com)

Due to the limitations of the printing process some actual guitar colors may appear slightly different than the above chips.

In order to continually improve the quality and/or performance of our instruments and/or to make use of the best available components, Epiphone reserves the right to change specifications without notice.







**GUARANTEED**  
against faulty workmanship and materials.

**Epiphone**

QUALITY INSTRUMENTS SINCE 1877



the epiphone company  
a division of gibson musical instruments  
645 massman drive  
nashville, tennessee  
37210 usa

©2002 The Epiphone Company, a division of Gibson Guitar Corp. All Rights Reserved. Epiphone reserves the right to change product specifications without notice.