

Epiphone®

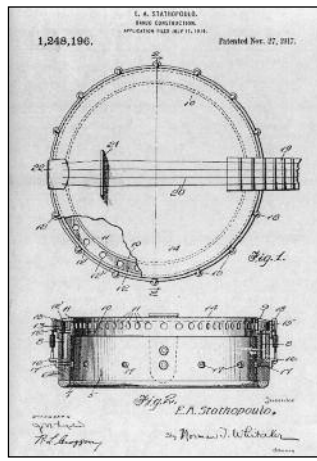
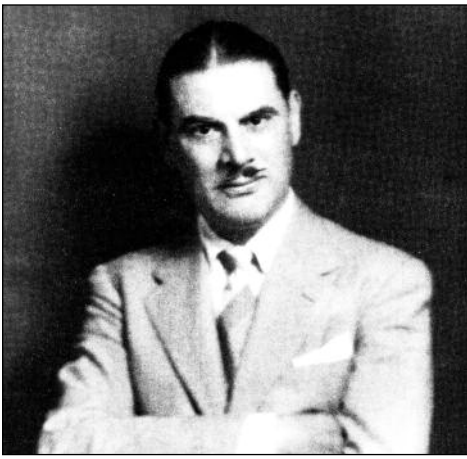
Since 1873

performance is our passion



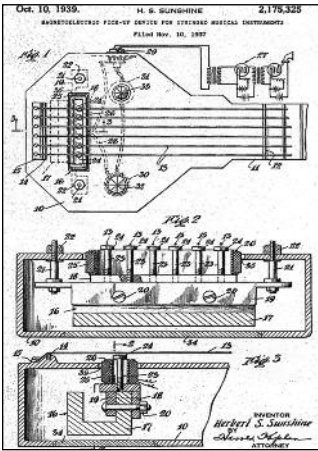
Collection 2018





EPHPHONE inc

INSTRUMENT BUILDERS SINCE 1873



THE NEW EPIPHONE GUITARS

Recording

Special Features on ALL:

- Back and sides of spruce, back & sides with triple flange for strength.
- Top of mahogany, laminated with spruce, maple and birch.
- Special construction which covers up corners and breaks of neck to body joint.

Epiphone Recording Guitars:

- Standard professional finish with bronze tone or natural tone.
- Stainless steel and gold frets.
- Bridge with felt.
- Hand made professional grade tone bridge.
- Special construction.

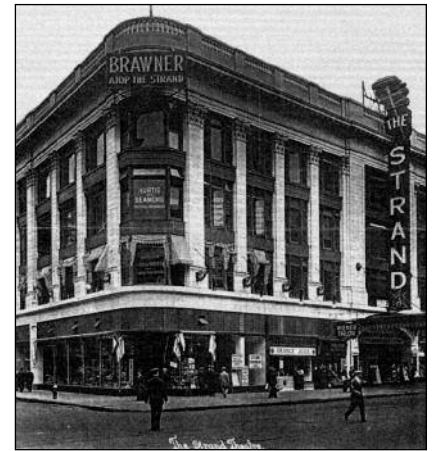
THE EPIPHONE MODEL C
Current size 100
of Anderson's 111

THE EPIPHONE MODEL E

THE EPIPHONE MODEL D
Current size 125
of Anderson's 7 all

Insert size 175, Anderson 599

All Epiphone guitars feature the most advanced construction in the world. The use of mahogany for the body and neck, spruce for the top, and a special construction which covers up corners and breaks of neck to body joint. The use of stainless steel and gold frets. Bridge with felt. Hand made professional grade tone bridge. Special construction.



THE EPIPHONE STORY

For over 140 years, Epiphone has led the world in designing professional, affordable, and innovative instruments. Whether you're a pro or just starting out, Epiphone has a guitar, bass, mandolin, or banjo that's just right for you.

The story of Epiphone starts in Sparta, Greece around 1870 when the Stathopoulos family began building and repairing traditional instruments. In the early 1900s, luthier Anastasios Stathopoulos brought his wife and children to the United States, settled in Manhattan, and continued the family trade as the House of Stathopoulos. Anastasios' oldest son, Epi, eventually took over from his father and in the 1920s re-introduced the company as "Epiphone", a reference to the Greek word for sound—"phone". The name was also an echo of the Greek word "epiphonous", meaning one sound on another--the son building on the dreams of the father. Epi built a new showroom and manufacturing facility on 14th street, which soon became a gathering place for the best musicians of the day including a young jazz guitarist from Wisconsin, Les Paul. Les would go on to build his first solid body electric guitar at the factory and remained a life-long supporter and consultant for Epiphone.

For Those Who Prefer "Blondes"

In addition to the De Luxe and Emperor Guitars listed in the catalog as available in the Blonde or Natural finish, this page displays the other EPIPHONE models now presented in the new finishes.

The BROADWAY "Natural" \$200.00

The Ritz Satin Blonde
A new addition to the EPIPHONE line is the RITZ Satin Blonde. It is built with all professional features in the modern style and coated with lacquer and chrome. This single new model with mahogany neck, curved spruce top, and maple back, is now available in the Satin Blonde finish. \$89.25

The FT-75
This model is not illustrated in the catalog. \$89.25

See catalog for complete description of Guitars Illustrated in this brochure as well as our Superior Mandolin and De Luxe Musical Machine.

The TRIUMPH "Natural" \$135.00

The SPARTAN "Satin Blonde" \$110.00

The BLACKSTONE "Blonde" \$87.25

The RITZ "Blonde" \$47.50



EPIPHONE, inc.
OF KALAMAZOO, MICHIGAN

announces
the acquisition of the business
of Epiphone, Inc., of New York

In Kalamazoo and under new management, Epiphone will continue to manufacture and distribute its famous line of guitars, string basses and amplifiers. Some models of string basses are available for immediate delivery, and certain models in the guitar line are expected to be ready in the Fall. The complete Epiphone line, including some new solid body electric guitars and amplifiers, will be announced for shipment early in 1958.

The same fine craftsmanship and high quality which has always characterized the Epiphone products will be continued.

All present Epiphone dealers will be given priority for deliveries and franchises, and it is expected that production will permit franchising an additional group of select dealers.

For information, write to
EPIPHONE, INC.
224 Eleanor Street
Kalamazoo, Michigan

Throughout the first half of the 20th Century, Epi patented breakthrough designs for mandolins, banjos, upright basses, and acoustic guitars including the Masterbilt Series, which continues today. In 1957 at the urging of Les Paul, the Stathopoulos family merged with Gibson, its foremost competitor, and began manufacturing a new line of instruments at the historic Gibson factory in Kalamazoo, Michigan. Over the next decade, Epiphone electric and acoustic guitars were embraced by artists from every genre including The Beatles, The Rolling Stones, John Lee Hooker, the Kinks, Otis Rush, Loretta Lynn, Roy Orbison, Jimi Hendrix, The Who, and Jimmie Page.

Today, from its state of the art headquarters in Nashville, TN, Epiphone is once again helping a new generation make music history with a wide range of affordable professional instruments. Technical breakthroughs such as the ProBucker™ pickup, series parallel switching, built in KillSwitch™ pots, the Shadow NanoFlex™ and NanoMag™ pickup systems, and premier acoustic/electric guitars featuring the eSonic™ preamp have made Epiphone a world leader in instrument design and manufacturing. Epiphone is the official instrument of Rocksmith™, the critically acclaimed video experience that's teaching millions around the world to play guitar and bass. The innovative PRO-1 Collection™ has made learning guitar easy for everyone. And the new Masterbilt® Century Collection are the first archtops designed to be played and heard as acoustic instruments even when amplified.

Once again, the great artists of our time like Gary Clark Jr., Brent Hinds of Mastodon, Paul McCartney, Slash, Tony Iommi, Jack Casady, Lee Malia of Bring Me the Horizon, Alabama Shakes, James Bay, Matt Heafy, Jack Antonoff, Brendon Small, and Tommy Thayer of KISS count on Epiphone for quality and innovation. Rarely is a great player without an Epiphone guitar, bass, Dobro®, or mandolin and no collection is complete without something from the House of Stathopoulos. At Epiphone we're designers, we're players, and we're mavericks. And we're passionate about everything we do.

Visit your Authorized Dealer today and make your own history with Epiphone.

Epiphone®

performance is our passion

A Part of Gibson Brands



- 2016** - *Masterbilt Century Archtop™ Acoustic/Electric Collection™* introduced.
- 2014** - *PRO-1™* Collection introduced.
- 2013** - Epiphone celebrates its 140th Anniversary with the grand opening of a new headquarters in Nashville, TN.
- 2004** - Epiphone opens its own factory in China, its first dedicated factory since 1957.
- 1994** - At NAMM, Epiphone introduces a full line of instruments including the *Casino*, *Riviera*, *Sorrento*, and *Rivoli* bass with support from Noel Gallagher of Oasis and jazz great Joe Pass.
- 1986** - Epiphone is purchased by Henry Juszkiewicz, David Berryman and Gary Zebrowski who inaugurate new and classic models.
- 1979** - Epiphone *Genesis* introduced.
- 1969** - Epiphone and Gibson are bought by Ecuadorian ECL Corporation. Epiphone production is moved to Japan and eventually Korea.
- 1966** - John Lennon debuts his Epiphone *Casino* at the NME Poll Winners Concert in London.
- 1965** - Paul McCartney records "Yesterday" on his Epiphone *Texan*.
- 1962** - Roy Orbison purchases an Epiphone *Bard* which becomes his main writing guitar throughout the 60s for hits like "Oh, Pretty Woman" and "Only the Lonely."
- 1961** - Epiphone introduces the *Casino*.
- 1958** - Epiphone introduces new instruments designed and built at the Gibson/Epiphone factory in Kalamazoo, MI, the *Coronet* solidbody.
- 1957** - Gibson purchases Epiphone.
- 1941** - Epiphone introduces a line of upright string basses.
- 1940** - Les Paul builds his first solid body prototype, "The Log," at the Epiphone factory.
- 1935** - Epiphone introduces the Electar series, its first line of electric instruments and amplifiers
- 1931** - Epiphone Banjo Co. introduces the Masterbilt line of guitars and opens a new showroom at 142 West 14th Street in Manhattan.
- 1923** - "Epi" Stathopoulos assumes control of the family business and begins making instruments under the name "Epiphone" - an amalgam of *Epi* and the Greek word for sound: *phone*.
- 1917** - The family instrument business, "House of Stathopoulos" is listed in NYC directory.
- 1909** - Anastasios Stathopoulos files first U.S. patent for a mandolin.
- 1903** - The Anastasios Stathopoulos family arrives at Ellis Island, New York.
- 1893** - Anastasio's son Epaminondas "Epi" Stathopoulos born in Smyrna, Turkey.
- 1973** - The Stathopoulos family emigrates from Greece to the coast of Turkey where they open a music store that sells and repairs lutes, violins, and bouzoukis. Anastasios Stathopoulos begins training to be a luthier.

Inspired by classic violin and cello designs, archtop acoustic guitars rose to popularity in the 1920's and 1930's becoming the rhythm instrument of choice for the "Big Band" era. Known for their warm woody tone, wide tonal range –especially in high and low frequencies–and punchy volume, archtop acoustics had the power to be heard above horn and percussion sections. However, with the invention of the electric guitar pickup, archtop guitars quickly became equipped with magnetic amplification and were for the most part, forever transformed into "electric" guitars.

Until now...



EPIPHONE MASTERBILT® CENTURY™ Acoustic Archtops



First Choice of the Stars and Why

The Epiphone Masterbilt Guitars are the choice of the stars because of their superb tone, their ruggedness, and their ability to stand up to the most demanding conditions of the most demanding performers.

The Epiphone Masterbilt Guitars are the choice of the stars because of their superb tone, their ruggedness, and their ability to stand up to the most demanding conditions of the most demanding performers.

The DE LUXE Masterbilt GUITAR
 In Great Britain, the site is the home of the Epiphone Masterbilt Guitars. Careful attention to detail results in a guitar that is both beautiful and rugged. The "De Luxe" is made of solid mahogany with a black and white binding on the top and gold plated bridge. Price \$275.

The TRIUMPH
 The guitar industry's most advanced and finest guitar has no equal. It has the most advanced tone, with rich, mellow, and full sound. The Triumph is made of solid mahogany with a black and white binding on the top and gold plated bridge. Price \$125.

The BROADWAY
 This instrument is the best of the best. It is made of solid mahogany with a black and white binding on the top and gold plated bridge. Price \$175.

The ROYAL
 This is a beautiful, personal, classic, and stylish guitar. Price \$95.

The BLACKSTONE
 A truly beautiful guitar in black, with a gold binding and gold plated bridge. Price \$75.

The ZENITH
 A fine new model, beautiful, classic, and stylish guitar. Price \$50.

The OLYMPIC
 In the past, this was a great instrument. Now, with a better construction, the Olympic Masterbilt guitar is a beautiful, classic, and stylish guitar. Price \$35.

The BRETON TENOR GUITAR
 The world of music has seen the best of the best. The Breton Tenor Guitar is made of solid mahogany with a black and white binding on the top and gold plated bridge. Price \$175.

The MELODY
 The most beautiful of all. The Melody is made of solid mahogany with a black and white binding on the top and gold plated bridge. Price \$35.

The STRAND MANDOLIN
 This Mandolin, with its superb tone and rugged construction, is the choice of the stars. Price \$75.

The ADELPHI
 The Adelphi is a beautiful, classic, and stylish guitar. Price \$75.

The SEED
 The Seed is a beautiful, classic, and stylish guitar. Price \$75.

Use Epiphone Masterbilt Strings — The Strings Walk the Golden Tone!

“Good musical instrument



EPIPHONE

MASTERBILT®

CENTURY™

Acoustic Archtops



Epiphone, the leader in archtop guitars, reinvents the archtop again by combining our original, time-tested Masterbilt® designs with 21st century acoustic guitar electronics to bring you the **Masterbilt Century™ Archtop Collection**. The first collection of archtop “acoustic/electric” guitars designed to be played and amplified as true acoustic instruments. Pick one up and you will immediately feel and hear the difference between today’s “flat top” acoustic guitar and the unique voice of a Masterbilt Century™ Archtop. Plug in and prepare to be amazed! You just have to hear it to believe it.

The new Masterbilt Century™ Collection features all Solid Spruce tops that will sound better the more you play them. And our low-impedance acoustic pickups are designed specifically to reproduce the unique acoustic tones of the Masterbilt Century™ Collection. Plus the 1930s-era replica tuners, upgraded to 18:1 ratio, and unique headstock veneer complete the “classic” look.

ents do not just happen”

Epaminondas “Epi” Stathopoulos



The **De Luxe** and **De Luxe Classic** have the iconic large body “Grand Auditorium” archtop design with either a round hole or “Classic” *f*-holes. Both produce a strong, full tone capable of cutting through any size band.

The **Zenith** and **Zenith Classic** are medium body “Auditorium” archtops with terrific mid-range punch that’s perfect for singers. The Zenith is also available in either a round hole or *f*-holes style.

The **Olympic** is a small body “Concert” *f*-style archtop with tremendous definition for singer/songwriter and soloists.

Visit your authorized Epiphone retailer and step into the new century of archtop acoustic/electric guitars from Epiphone.



THE DE LUXE AND DE LUXE CLASSIC

The Masterbilt Century™ Archtop Collection's De Luxe and De Luxe Classic recreate the iconic full body tone that made Epiphone world-renowned. Plug in a Deluxe and you'll hear the instrument's true acoustic tone thanks to the custom designed eSonic™ HD (High Definition) preamp system and Shadow NanoFlex™ HD under-saddle pickup. The first generation of Epiphone archtops made in the 1930s were designed to be heard over a big band. Today, the Masterbilt Century™ De Luxe (round hole) and De Luxe Classic (f-hole) carry on that tradition of elegant style and big tone. Masterbilt Century™ archtops feature Solid Spruce tops with classic longitudinal bracing for a unique and exquisite acoustic tone that will sound better the more you play. The custom designed Shadow NanoFlex™ HD pickup is built into the floating bridge and includes discreetly mounted controls for Volume and EQ in the sound hole or lower f-hole. Both the De Luxe and De Luxe Classic feature large "notched diamond" inlays, beautiful 3-ply ivory and black binding, a recreation of the original 1930s era headstock with "mother of pearl" banner inlays, a bone nut, and aged nickel Epiphone 18:1 tuners. The De Luxe and De Luxe Classic are available in a Vintage Natural or Vintage Sunburst aged gloss finish along with an optional Masterbilt Century™ hard case.



THE ZENITH AND ZENITH CLASSIC

The Zenith and Zenith Classic are medium-sized archtops and have a full and punchy tone. The Zeniths feature a Solid Spruce top with traditional longitudinal bracing, a rounded “C” profile neck, and Falling Snowflakes inlay. The Zenith is known for its woody tone and strong midrange that sounds beautiful unamplified on a small stage or in a studio. But now the cutting edge eSonic™ HD (High Definition) preamp system and Shadow NanoFlex™ HD under saddle pickup make it possible to hear the Zenith amplified exactly as it sounds unplugged. No archtop player has ever heard an archtop accurately represented through an amp or sound system before! The Shadow NanoFlex™ HD pickup has easy access controls for Volume and EQ mounted just inside the lower f-hole or sound hole. The pre-amp system is powered by a standard 9-volt battery easily accessible near the ¼” nickel output jack. The Zenith and Zenith Classic are available in a Vintage Natural or a Vintage Sunburst aged gloss finish along with an optional Masterbilt Century™ hard case.



THE OLYMPIC

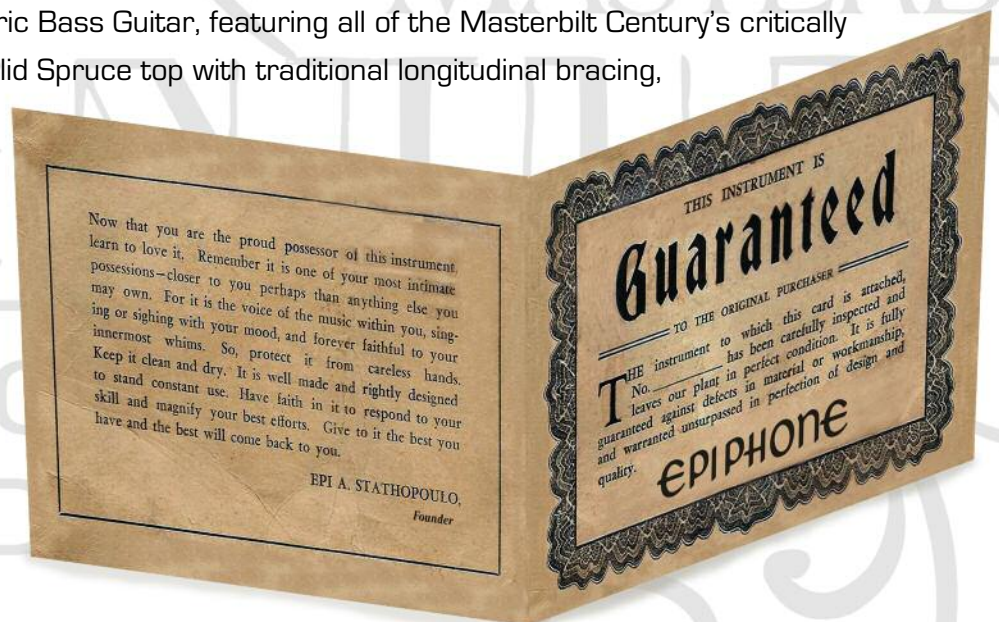
The new Masterbilt Century™ Olympic is a reissue of the historic small body archtop favored for its bright, focused tone that's terrific for soloists and solo singers. The Olympic features a Solid Spruce top with classic *f*holes, traditional longitudinal bracing, aged nickel hardware, vintage style machine heads with 18:1 tuning ratio, a recreation of the original Masterbilt® headstock with classic banner inlays, a bone nut, and a 25.5" scale. The Olympic has considerable volume for its size. And now you can plug your Olympic and be heard on any stage thanks to the eSonic™ HD (High Definition) preamp system and Shadow NanoFlex™ HD under saddle pickup. Available in aged gloss Honeyburst and Violinburst finishes along with an optional Masterbilt Century™ hard case.





THE DE LUXE BASS

Epiphone presents the newest member of the Masterbilt Century™ family, the Masterbilt® De Luxe Classic™ 4-String Acoustic/Electric Bass Guitar, featuring all of the Masterbilt Century's critically acclaimed features including a Solid Spruce top with traditional longitudinal bracing, and the eSonic™ and Shadow NanoFlex™ HD pickup system for true acoustic tone when plugged in. The De Luxe Bass is available in a Vintage Natural or Vintage Sunburst aged gloss finish along with an optional Masterbilt Century™ hard case.





Electric Archtops



Inspired by "1966" Century™

A faithful reissue of the classic 60s hollowbody thinline archtop featuring an Epiphone P-90 PRO single coil pickup. Colors: Cherry and Vintage Sunburst Aged Gloss Finish.

Pro P-90 single coil by EPIPHONE



Broadway™

The Broadway is a direct descendent of Epiphone's early electric archtops. Featuring Alnico Classic™ humbuckers, a Frequensator™ tailpiece, and historic "tree of life" Mother of Pearl and abalone headstock inlay. Color: Natural



Joe Pass Emperor II™ PRO

Designed with the "President of Bebop Guitar." Featuring tone-rich ProBuckers™ with Coil-Splitting and a new Graphtech® NuBone XL™ nut. Colors: Vintage Sunburst, Natural, Wine Red.

Pro PROBUCKER™ by EPIPHONE

Model	Hardware	Scale	Nut Width	Neck Joint	Neck Materials	Body Wood	Top Wood	Neck Pickup	Bridge Pickup	Controls	Tailpiece/Bridge	Machine Heads
Inspired by "1966" Century	Aged Nickel	24.75"	1.65"	Mortise & Tenon	Mahogany	Lam. Maple	Lam. Maple	Epiphone P-90 PRO		1 Volume, Master Tone	Trapeze/Rosewood, floating	Wilkinson Vintage 3-in-row, 14:1 ratio
Broadway	Gold	25.5"	1.69"	Mortise & Tenon	Maple	Maple	Spruce	Epiphone Alnico Classic	Epiphone Alnico Classic	2 Volume, 2 Tone	Frequensator/Rosewood, floating	Grover Rotomatic, 18:1 ratio
Joe Pass Emperor II PRO	Gold	25.5"	1.69"	Mortise & Tenon	3-pc Hard Maple	Maple	Spruce	Epiphone ProBucker-2	Epiphone ProBucker-2	2 Volume w/ Coil-Splitting 2 Tone	Scroll Trapeze/Rosewood, floating	Grover Rotomatic, 18:1 ratio

Sheraton-II™ PRO

First released in 1959 and hailed by blues legend John Lee Hooker as "*an out-did 335*," the modern Epiphone Sheraton-II PRO honors Epiphone's most influential thinline semi-hollowbody archtop. Now with critically acclaimed ProBucker™ pickups with Coil-Splitting and a Graphtech® NuBone XL™ nut. Colors: Vintage Sunburst, Ebony, Natural, Wine Red.

Pro BUCKER™
by EPIPHONE



B.B. King Lucille™

Designed by legend B. B. King and inspired by his favorite guitar, *Lucille*. Featuring a VariTone™ control, Alnico Classic™ humbuckers, and gold hardware. Color: Ebony

Casino™

First introduced in 1961, the Casino has been making rock and roll history for over 50 years. Featuring a true hollowbody ES-style design with two powerful P-90 Dogear pickups. Colors: Natural, Cherry, and Vintage Sunburst

"The Casino changed my approach. I keep feeling inspired every time I pick one up." - Gary Clark Jr.



Model	Hardware	Scale	Nut Width	Neck Joint	Neck Materials	Body Wood	Top Wood	Neck Pickup	Bridge Pickup	Controls	Tailpiece/Bridge	Machine Heads
Casino	Nickel	24.75"	1.69"	Mortise & Tenon	Mahogany	5-ply Maple	5-ply Maple	Epiphone P-90T	Epiphone P-90R	2 Volume, 2 Tone	Trapeze/Locktone Tune-o-matic	Vintage Deluxe, 14:1 ratio
B. B. King Lucille	Gold	24.75"	1.69"	Mortise & Tenon	Hard Maple	Maple	Maple	Epiphone Alnico Classic	Epiphone Alnico Classic	2 Volume, 2 Tone, VariTone	TP-6/Locktone Tune-o-matic	Grover Rotomatic, 18:1 ratio
Sheraton-II PRO	Gold	24.75"	1.69"	Mortise & Tenon	5-pc Maple/Walnut	Lam. Maple	Lam. Maple	Epiphone ProBucker-2	Epiphone ProBucker-2	2 Volume w/ Coil-Splitting 2 Tone	Locktone Stopbar/Tune-o-matic	Grover Rotomatic, 18:1 ratio



Electric Archtops



Gibson
GEAR
 USA P-90s

Elitist 1965 Casino™ Outfit
(Made in Japan)

A stunning recreation of a 1965 Casino. Featuring a 5-ply Maple body with a Spruce top cut to the exact profile of a vintage mid-60s Casino built at the Gibson & Epiphone factory in Kalamazoo, MI. Featuring a Maple body, Mahogany neck, Gibson® USA P-90 pickups, bone nut, ABR bridge, Switchcraft™ electronics, and Grover® machine heads. Includes hardshell case. Colors: Vintage Sunburst, Natural.

“If I had to choose one electric guitar, it would be this.”
 - Paul McCartney



Model	Hardware	Scale	Nut Width	Neck Joint	Neck Materials	Body Wood	Top Wood	Neck Pickup	Bridge Pickup	Controls	Tailpiece/Bridge	Machine Heads
Casino	Nickel	24.75"	1.625" (bone)	Mortise & Tenon	Mahogany	5-ply Maple	5-ply Maple	Gibson USA P-90T	Gibson USA P-90R	2 Volume, 2 Tone	Trapeze/ABR Tune-o-matic w Delrin saddles	Grover Vintage, 15:1 ratio

Electric Archtops



Wildkat™ & Wildkat™ White Royale™

Epiphone's premier modern archtop featuring a Mahogany body, Maple top, P-90 Dogear Classic™ pickups, Grover® machine heads and a Bigsby™ B70 Vibrato. Color: Antique Natural. **White Royale:** Pearl White

Emperor Swingster™ & Swingster™ White Royale

Epiphone's modern hollowbody classic that's perfect for rockabilly, jazz, and country. Featuring SwingBucker™ pickups with parallel series wiring and Alnico-V magnets along with a B30 Bigsby™ vibrato with "wire" handle. Colors: Wine Red, Sunrise Orange. **White Royale:** Pearl White.



**Dirty Fingers™
Humbucker**

Tom DeLonge Riviera™ ES-333

Designed with Blink 182's Tom DeLonge, the ES-333™ combines classic style with the raw power of a Gibson® USA Dirty Fingers™ humbucker pickup. Featuring DeLonge's custom color finish with racing strip. Color: Brown

Model	Hardware	Scale	Nut Width	Neck Joint	Neck Materials	Body Wood	Top Wood	Neck Pickup	Bridge Pickup	Controls	Tailpiece/Bridge	Machine Heads
Wildkat	Nickel (Gold)	24.75"	1.69"	Mortise & Tenon	Hard Maple	Mahogany	Flame Maple veneer	Epiphone P-90T	Epiphone P-90R	1 Master Volume, 2 Volume, 1 Tone	Bigsby B70/Locktone Tune-o-matic	Grover Rotomatic, 18:1 ratio
Emperor Swingster	Nickel (Gold)	24.75"	1.69"	Mortise & Tenon	Hard Maple	Maple	Select Spruce	Swingbucker w Alnico V mags	Swingbucker Plus w Alnico V mags	2 Volume, 2 Tone, Series Parallel	Bigsby B30/Locktone Tune-o-matic	Grover Rotomatic, 18:1 ratio
Tom DeLonge Riviera ES-333	Nickel	24.75"	1.69"	Mortise & Tenon	Mahogany	Lam. Maple	Lam. Maple		Gibson USA Dirty Fingers	1 Volume	Locktone Stopbar/Tune-o-matic	Grover Rotomatic, 18:1 ratio

Model	Hardware	Scale	Nut Width	Neck Joint	Neck Materials	Body Wood	Top Wood	Neck Pickup	Bridge Pickup	Controls	Tailpiece/ Bridge	Machine Heads
Riviera Custom P-93	Gold	24.75"	1.69"	Mortise & Tenon	Mahogany	Maple	Maple	Epiphone P-90T <i>Middle: P-90</i>	Epiphone P-90R	3 Volume, 1 Tone	Bigsby B70/ Locktone Tune-o-matic	Wilkinson Deluxe, 15:1 ratio
The Dot	Nickel	24.75"	1.69"	Mortise & Tenon	Mahogany	Maple	Maple	Epiphone Alnico Classic	Epiphone Alnico Classic	2 Volume, 2 Tone	Stopbar/ Locktone Tune-o-matic	Grover Rotomatic, 18:1 ratio
Dot Studio	Nickel	24.75"	1.69"	Mortise & Tenon	Mahogany	Mahogany	Mahogany	Epiphone Open-coil Alnico Classic	Epiphone Open-coil Alnico Classic	1 Volume, 1 Tone	Stopbar/ Locktone Tune-o-matic	Grover Rotomatic, 18:1 ratio
ES-339 PRO	Nickel	24.75"	1.69"	Mortise & Tenon	Mahogany	Lam. Maple	Lam. Maple	Epiphone Alnico Classic PRO	Epiphone Alnico Classic PRO	2 Volume w/ Coil-Splitting, 2 Tone	Locktone Stopbar/ Tune-o-matic	Epiphone Deluxe, 18:1 ratio
Casino Coupe	Nickel	24.75"	1.69"	Mortise & Tenon	Mahogany	5-ply Maple	5-ply Maple	Epiphone P-90T	Epiphone P-90R	2 Volume, 2 Tone	Trapeze/ Locktone Tune-o-matic	Vintage Deluxe 14:1 ratio

Electric Archtops





Riviera™ Custom P93

The Riviera has been an Epiphone classic since the late 1950s. Now featuring three P-90 “Dogear” pickups plus a gold Bigsby™ B70 tremelo. Color: Wine Red



The Dot™

A superb introduction to the classic sound of an ES-335 at an affordable price. Featuring the same historic profile as the original plus Alnico Classic™ humbuckers and Grover® machine heads. Colors: Ebony, Vintage Sunburst, Cherry, Natural.



Dot™ Studio

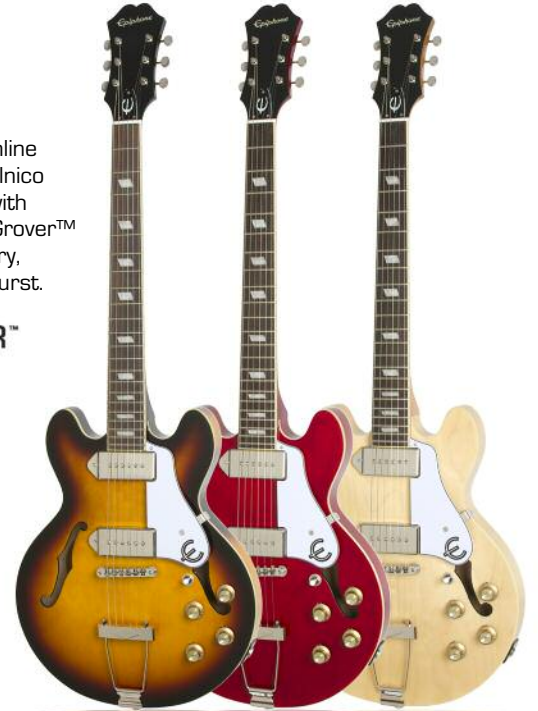
A stripped-down version of the historic Epiphone Dot™ featuring a Mahogany body and neck, open-coil Alnico Classic™ humbuckers, and a '60s-era sloped “Dovewing” headstock. Color: Cherry



ES-339 PRO

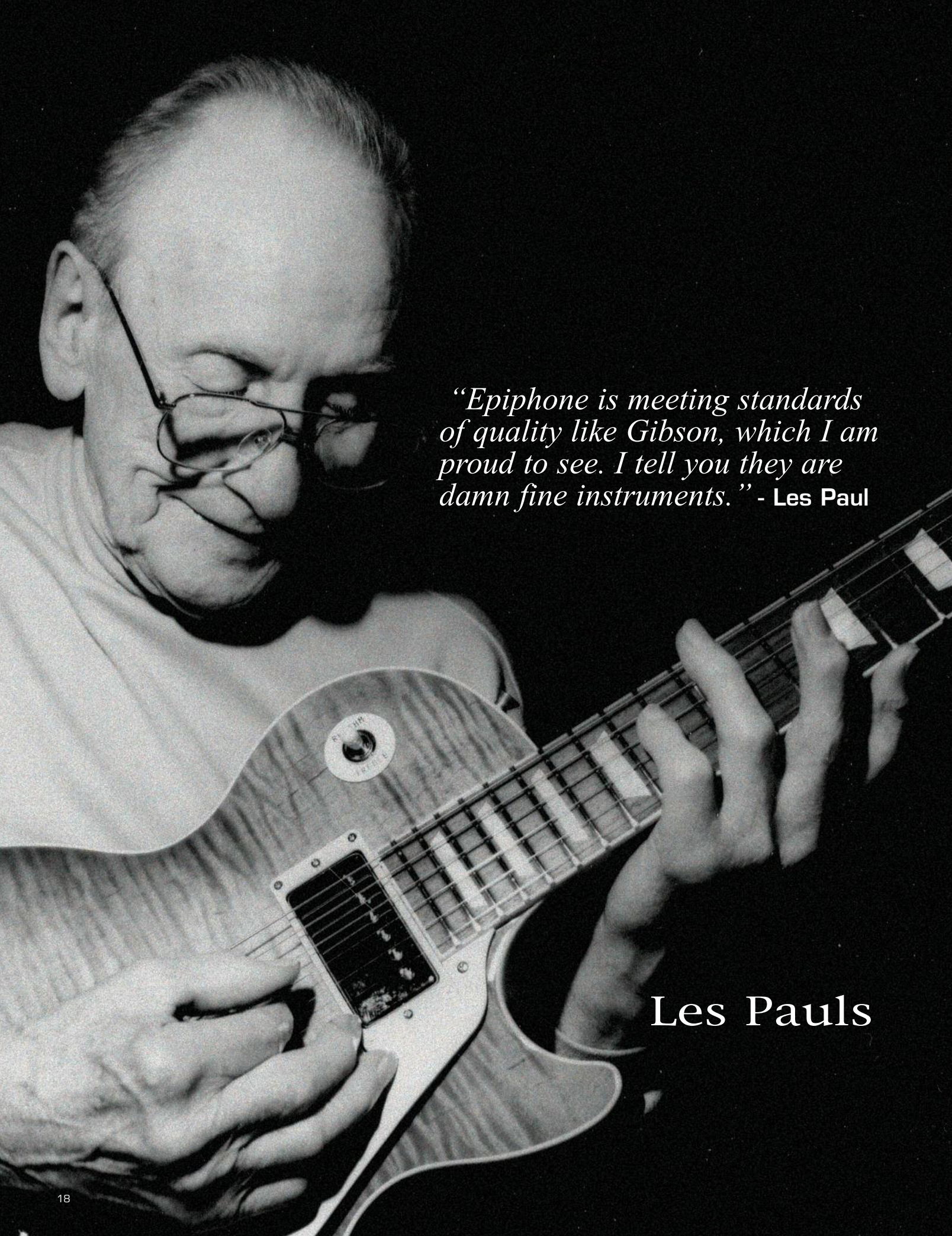
A smaller-sized ES-style thinline archtop featuring tone-rich Alnico Classic PRO™ humbuckers with push/pull Coil-Splitting, and Grover™ machine heads. Colors: Cherry, Ebony, Natural, Vintage Sunburst.

Pro **BUCKER™**
by EPIPHONE



Casino Coupe™

The Casino reborn in a smaller ES-339 body size with the same big sound as the classic Casino! Featuring two P-90 Dogear single coil pickups. Colors: Vintage Sunburst, Cherry, and Natural.



“Epiphone is meeting standards of quality like Gibson, which I am proud to see. I tell you they are damn fine instruments.” - Les Paul

Les Pauls

Les Paul® Tribute Plus Outfit

The Les Paul "Tribute" Plus honors Epiphone's long friendship with innovator Les Paul. Featuring Gibson® USA '57 humbuckers, CTS™ potentiometers, Switchcraft™ input jack and toggle, series parallel switching, and hardshell case. Colors: Black Cherry, Faded Cherry, Midnight Ebony, Midnight Sapphire, Vintage Sunburst.

Gibson
GEAR
'57 Classic
Humbuckers



Les Paul® Standard

The world's #1 electric guitar and designed with Mr. Les Paul's input. Featuring Alnico Classic™ humbuckers and Grover® machine heads. Colors: Metallic Gold, Ebony, Cardinal Red, Pelham Blue. **Left-handed:** Ebony.

Model	Hardware	Scale	Nut Width	Neck Joint	Neck Materials	Body Wood	Top Wood	Neck Pickup	Bridge Pickup	Controls	Tailpiece/Bridge	Machine Heads
Les Paul Tribute Plus Outfit	Nickel	24.75"	1.69"	Mortise & Tenon	Mahogany	Mahogany	Flame Carved Hard Maple	Gibson USA '57 Classic	Gibson USA '57 Classic Plus	2 Volume, 2 Tone w/ series, parallel push/pull	Locktone Stopbar/Tune-o-matic	Grover Rotomatic, 18:1 ratio
Les Paul Standard	Nickel	24.75"	1.69"	Mortise & Tenon	Mahogany	Mahogany	Maple veneer	Epiphone Alnico Classic	Epiphone Alnico Classic	2 Volume, 2 Tone	Locktone Stopbar/Tune-o-matic	Grover Rotomatic, 18:1 ratio

Les Paul® Custom PRO

The “tuxedo” Les Paul Custom PRO is the modern version of one of Les’ favorite guitars. Featuring ProBucker™ pickups with Coil-Splitting, Grover® machine heads, and gold hardware. Colors: Ebony, Alpine White. **Left-handed:** Ebony.

*Pro*BUCKER™
by EPIPHONE



Les Paul® Black Beauty 3

The world famous “tuxedo” Les Paul designed by Les himself with gold hardware, three Alnico Classic™ humbuckers, gold Grover® tuners, and a beautiful Ebony finish. Color: Ebony.

Les Paul® Custom PRO

Featuring ProBucker-2™ and ProBucker-3™ humbuckers with Coil-Splitting, a AAA Flame Maple veneer Top, Grover® machine heads, and a hand-set Mahogany neck. Colors: Wine Red, Honeyburst, Trans Blue, Heritage Cherry Sunburst, Vintage Sunburst. **Left-Handed:** Heritage Cherry Sunburst.

*Pro*BUCKER™
by EPIPHONE



Model	Hardware	Scale	Nut Width	Neck Joint	Neck Materials	Body Wood	Top Wood	Neck Pickup	Bridge Pickup	Controls	Tailpiece/Bridge	Machine Heads
Les Paul Custom PRO	Gold	24.75"	1.69"	Mortise & Tenon	Mahogany	Mahogany	Mahogany	Epiphone ProBucker-2	Epiphone ProBucker-3	2 Volume w/ Coil-Splitting, 2 Tone	Locktone Stopbar/Tune-o-matic	Grover Rotomatic, 18:1 ratio
Les Paul Black Beauty-3	Gold	24.75"	1.69"	Mortise & Tenon	Mahogany	Mahogany	Mahogany	Epiphone Alnico Classic	(2) Epiphone Alnico Classic	2 Volume, 2 Tone	Locktone Stopbar/Tune-o-matic	Grover Rotomatic, 18:1 ratio
Les Paul Standard Plustop PRO	Nickel	24.75"	1.69"	Mortise & Tenon	Mahogany	Mahogany	AAA Flame Maple veneer	Epiphone ProBucker-2	Epiphone ProBucker-3	2 Volume w/ Coil-Splitting, 2 Tone	Locktone Stopbar/Tune-o-matic	Grover Rotomatic, 18:1 ratio



Les Pauls

Les Paul® ES PRO

The classic Les Paul tone in a true ES-style archtop. Featuring an ES-body with f-holes and traditional electric archtop bracing, ProBuckers™ with Coil-Splitting, a dual-action truss rod, and Grover® Rotomatic machine heads. Colors: Faded Cherry Sunburst, Translucent Black, Wine Red.

ProBUCKER™
by EPIPHONE



Prophecy Les Paul® Custom Plus GX Outfit

For those who dare to break new ground in speed, sound, and technique. Featuring Gibson® USA humbuckers with Coil-Splitting, Quilt Maple top, graphite nut, and Speed Taper™ satin finish neck. Includes Prophecy hardshell case. Colors: Heritage Cherry Sunburst, Black Cherry.

Prophecy Les Paul® Custom Plus EX Outfit

Hailed by metal players as the ultimate shredder's guitar. Featuring a Quilt Maple top, EMG humbuckers, Grover® machine heads, and a hardshell Prophecy case. Colors: Midnight Sapphire, Midnight Ebony.



Custom Plus GX

Gibson
GEAR

490R & 498T
Humbuckers

Custom Plus EX

EMG

81/85 Active
Humbuckers

Model	Hardware	Scale	Nut Width	Neck Joint	Neck Materials	Body Wood	Top Wood	Neck Pickup	Bridge Pickup	Controls	Tailpiece/ Bridge	Machine Heads
Les Paul ES PRO	Nickel	24.75"	1.69"	Mortise & Tenon	Mahogany	3-layer Maple	AAA Flame Maple veneer	Epiphone ProBucker-2	Epiphone ProBucker-3	2 Volume w/ Coil-Splitting, 2 Tone	Locktone Stopbar/ Tune-o-matic	Grover Rotomatic, 18:1 ratio
Prophecy Les Paul Custom Plus EX	Black	24.75"	1.69"	Mortise & Tenon	Mahogany	Mahogany	Quilt Maple veneer	EMG-85 Humbucker	EMG-81 Humbucker	2 Volume, 2 Tone	Locktone Stopbar/ Tune-o-matic	Grover Rotomatic, 18:1 ratio
Prophecy Les Paul Custom Plus GX	Gold	24.75"	1.69"	Mortise & Tenon	Mahogany	Mahogany	Quilt Maple veneer	Gibson USA 490R	Gibson USA 498T	2 Volume w/ Coil-Splitting, 2 Tone	Locktone Stopbar/ Tune-o-matic	Grover Rotomatic, 18:1 ratio
Prophecy Ultra-III	Nickel	24.75"	1.69"	Mortise & Tenon	Mahogany	Chambered Mahogany	AAA Flame Maple veneer	ProBucker-2/ NanoMag	Epiphone ProBucker-3	2 Volume, nanoMag Vol A/B, Tone A/B	Locktone Stopbar/ Tune-o-matic	Grover Rotomatic, 18:1 ratio

Where Tradition Meets Technology



Computer designed body cavities for a more "acoustic" tone



Epiphone ProBucker™ pickups



NanoMag™ controls



Three different outputs



Pickup ring-mounted Chromatic tuner

Les Paul® Ultra-III

Tradition meets technology with the Les Paul Ultra III. Featuring ProBucker™ pickups, a Shadow NanoMag™ pickup, Native Instruments GuitarRig™ download, USB output, mono and stereo outputs, and a beautiful AAA Flame Maple veneer top. Also includes a full-function chromatic tuner built into the pickup mounting ring. Colors: Vintage Sunburst, Midnight Ebony, Faded Cherry Sunburst, Midnight Sapphire..



ProBUCKER™
by EPIPHONE

Shadow®

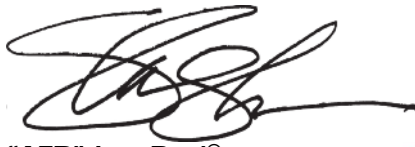


Les Pauls



Les Paul® SL

The new 2017 Les Paul SL™ is the most affordable 2-pickup Les Paul ever. Featuring a slim light-weight Poplar body with powerful Epiphone Ceramic pickups. Available in six exclusive colors: Ebony, Heritage Cherry Sunburst, Vintage Sunburst, Turquoise, Sunset Yellow, and Pacific Blue.



Slash "AFD" Les Paul® Special II Outfit

Designed with Slash, the "AFD" ("Appetite for Destruction") Outfit is perfect for beginners and pros alike. Featuring a Les Paul Special II in classic Appetite Amber finish with Epiphone Ceramic Plus™ Zebra-coil pickups with a built in Shadow® E-Tuner, premium gigbag, plus custom Slash signature picks and free online lessons from eMedia™. Color: Appetite Amber

FREE
eMedia
Award Winning
On-Line lessons



Les Paul® Express Outfit

The little Les Paul that roared! The Express captures the look, sound, and feel of a full size Les Paul but in a smaller package that's perfect for younger players and for travel. Colors: Vintage Sunburst, Ebony.



Model	Hardware	Scale	Nut Width	Neck Joint	Neck Materials	Body Wood	Top Wood	Neck Pickup	Bridge Pickup	Controls	Tailpiece/Bridge	Machine Heads
Les Paul SL	Nickel	24.75"	1.69"	Bolt-on	Hard Maple	Poplar	Poplar	650SCR Ceramic Single-coil	700SCT Ceramic Single-coil	Master Volume, Master Tone	Adjustable Wrap-around	Premium Covered, 14:1 ratio
Slash "AFD" Les Paul Special-II	Nickel	24.75"	1.69"	Bolt-on	Mahogany	Mahogany	AAA Flame Maple veneer	Ceramic Plus Zebra-coil	Ceramic Plus Zebra-coil w/ E-Tuner	Master Volume, Master Tone	Stopbar/Tune-o-matic	Premium Covered, 14:1 ratio
Les Paul Express	Nickel	22"	1.65"	Bolt-on	Hard Maple	Mahogany	Mahogany	Epiphone 650R Open-coil	Epiphone 700T Open-coil	Master Volume, Master Tone	FB-601 SAdjustable	Premium Diecast, 15:1 ratio



Les Paul® Studio

The Les Paul Studio was designed for musicians who like a basic, unadorned Les Paul that weighs less than standard models. Featuring a lightweight Mahogany body and open coil Alnico Classics™. Colors: Worn Cherry, Alpine White & Ebony

Les Paul® Special VE™ (Vintage Edition)

Featuring the classic Les Paul profile but made with a lightweight Poplar body and powered by Epiphone Open-Coil Humbuckers. Available in new "Vintage Worn" color finishes. Colors: Vintage Sunburst, Cherry Sunburst, Walnut, Ebony, Cherry



Les Paul® Studio LT

The perfect instrument for players looking for an affordable guitar with the classic sound and feel of a Les Paul. Featuring a Mahogany Body and Neck with Zebra Coil Humbuckers. Colors: Heritage Cherry Sunburst, Walnut, Ebony, Violin Sunburst.

Model	Hardware	Scale	Nut Width	Neck Joint	Neck Materials	Body Wood	Top Wood	Neck Pickup	Bridge Pickup	Controls	Tailpiece/Bridge	Machine Heads
Les Paul Studio	Nickel	24.75"	1.69"	Mortise & Tenon	Mahogany	Mahogany	Maple veneer	Epiphone Alnico Classic	Epiphone Alnico Classic	2 Volume, 2 Tone	Locktone Stopbar/Tune-o-matic	Grover Rotomatic, 18:1 ratio
Les Paul Special VE	Nickel	24.75"	1.69"	Bolt-on	Mahogany	Poplar	Poplar	Epiphone 650R Open-coil	Epiphone 700T Open-coil	Master Volume, Master Tone	Stopbar/Tune-o-matic	Premium Covered, 14:1 ratio
Les Paul Studio LT	Nickel	24.75"	1.69"	Bolt-on	Mahogany	Mahogany	Mahogany	Epiphone Zebra-coil	Epiphone Zebra-coil	2 Volume, 2 Tone	Stopbar/Tune-o-matic	Premium Die-cast, 14:1 ratio

Goth "1958" Explorer™

Goth Les Paul® Studio

Goth Thunderbird™-IV Bass

GOTH

Goth "1958" Explorer™

Classic "1958" style Explorer body in a unique Pitch Black finish. Featuring Alnico Classic™ humbuckers, a SlimTaper™ "D" profile neck, Mahogany body and neck, and premium die-cast machine heads. Color: Pitch Black

Goth Les Paul® Studio

The ultimate slab of dark magic, featuring the classic Les Paul™ profile with open-coil Alnico Classic™ humbuckers in a Pitch Black finish. Color: Pitch Black

Goth Thunderbird-IV™ Bass

A rock classic goes Pitch Black. Featuring the legendary Thunderbird bass profile plus TB-Plus™ bass humbuckers, black hardware, and premium die-cast machine heads. Color: Pitch Black

Model	Hardware	Scale	Nut Width	Neck Joint	Neck Materials	Body Wood	Top Wood	Neck Pickup	Bridge Pickup	Controls	Tailpiece/Bridge	Machine Heads
Goth "1958" Explorer	Black	24.75"	1.69"	Mortise & Tenon	Mahogany	Mahogany	Mahogany	Epiphone Alnico Classic	Epiphone Alnico Classic	2 Volume, 1 Tone/KillPot	Locktone Stopbar/Tune-o-matic	Grover Mini-Rotomatic, 14:1 ratio
Goth Les Paul Studio	Black	24.75"	1.69"	Mortise & Tenon	Mahogany	Mahogany	Mahogany	Ceramic Plus Alnico Classic	Epiphone Alnico Classic	2 Volume, 2 Tone/KillPot	Locktone Stopbar/Tune-o-matic	Grover Rotomatic, 18:1 ratio
Goth Thunderbird-IV Bass	Black	34"	1.50"	Bolt-on	Hard Maple	Mahogany	Mahogany	Epiphone TB-Plus Bass	Epiphone TB-Plus Bass	2 Volume, 1 Tone	3-point Adjustable	Premium Diecast, 17:1 ratio



Johnny A.

Ltd. Ed. Johnny A. Custom Outfit

Based on rock legend Johnny A.'s original design. Featuring a beautiful Flame Maple top in Sunset Glow finish, Gibson 57 Classics®, Bigsby® B70 vibrato, Ebony fretboard, and hard case. Color: Sunsey Glow



Jack Casady

Ltd. Ed. 20th Anniversary Jack Casady Bass

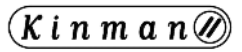
Jack Casady, a member of the Rock & Roll Hall of Fame and co-founder of Jefferson Airplane and Hot Tuna, designed his signature bass to be his 'dream' instrument. Commemorating the 20th Anniversary of this best selling bass, the 20th Anniversary Jack Casady bass features a Flame Maple Veneer top finished in Wine Red plus a custom gig bag, deluxe leather strap, and certificate of authenticity hand signed by Mr Casady.



James Bay

Ltd. Ed. James Bay Signature "1966" Century™ Outfit

A recreation of James Bay's customized 1966 Epiphone Century in a Gloss Cherry finish. Featuring a Kinman® Noiseless "Sweet Neck" P-90, floating Rosewood bridge with brass wheels, a James Bay "Hat Man" headstock logo, Wilkinson™ Deluxe machine heads, "CTS" 500K pots, and a reissue of an Epiphone 60s era hard case plus a hand-signed photo and custom strap. Color: Cherry



Kinman Noisless "Sweet Neck" P-90



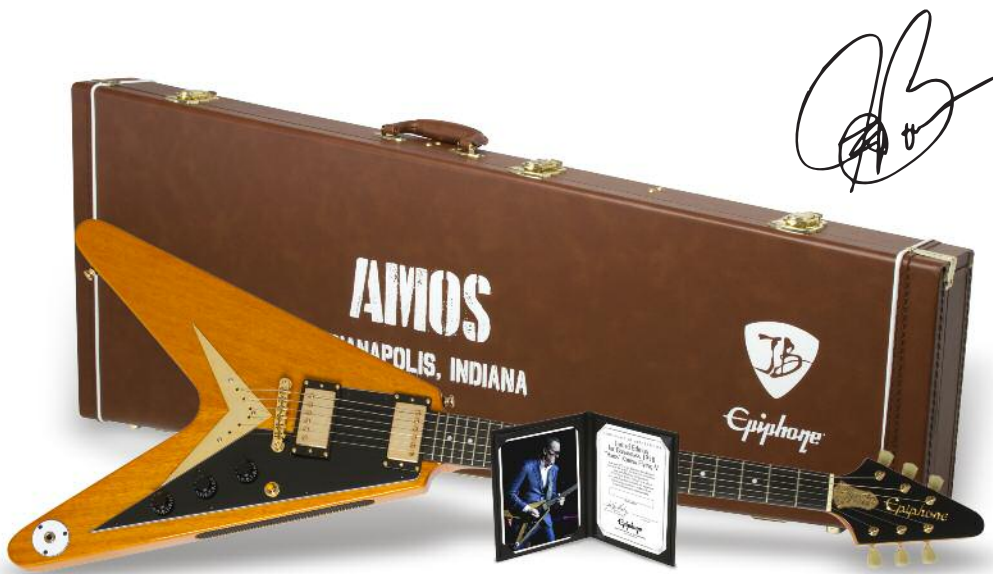
Zykh

Ltd. Ed. Matt Heafy "SnØfall" Les Paul® Custom Outfit (6 & 7-string)

Matt Heafy returns with the "SnØfall" Les Paul Custom Outfit 6 and 7-string models. Inspired by Trivium's acclaimed album Silence in the Snow. Featuring a Custom Les Paul design with an Alpine White Gloss finish, Phenolic fingerboard, and EMG active pickups. Plus, both 6 and 7-string Ltd. Ed "SnØfall" Les Pauls include a premium gigbag and hand-signed Certificate of Authenticity.



81/85 Actives



JB

Ltd. Ed. Joe Bonamassa 1958 "Amos" Korina Flying-V® Outfit

Bonamassa's fifth custom Epiphone signature model honors his most cherished vintage guitar, the rare "Amos" Flying V, one of only 91 Flying Vs produced in 1958. Featuring Epiphone ProBucker™ pickups, CTS™ electronics, a LockTone™ ABR-1 Tune-o-matic bridge, and a 50s style Flying-V case along with a hand-signed certificate of authenticity. Color: Antique Natural



Tommy Thayer

Ltd. Ed. Tommy Thayer "White Lightning" Explorer™ Outfit

The third signature model designed with legend Tommy "Spaceman" Thayer of KISS. Featuring the classic Explorer body in a Custom Metallic White finish plus Seymour Duncan® JB™ Humbuckers, Grover® Rotomatic machine heads, custom hard case, and more. Includes hand signed Certificate of Authenticity in a presentation binder.



JB™ Humbuckers



Signature/ Limited Edition



Model	Hardware	Scale	Nut Width	Neck Joint	Neck Materials	Body Wood	Top Wood	Neck Pickup	Bridge Pickup	Controls	Tailpiece/Bridge	Machine Heads
Johnny A. Custom	Nickel	25.5"	1.69"	Set/Glued-in	Mahogany	Mahogany	Flame maple veneer	Gibson USA '57 Classic	Gibson USA '57 Classic	2 Volume, Bridge Tone, Neck Tone/KillPot	Bigsby B70 Vibrato/ ABR-1Tune-o-matic	Epiphone Deluxe, 18:1 ratio
20th Anniversary Jack Casady Bass	Nickel	34"	1.69"	Set, Glued-in	Mahogany	Maple	Maple	JCB-1 Low-Impedance HB		Master Volume, Master Tone, VariTone	3-Point Adjustable	Die-cast "Clover", 19:1 ratio
James Bay "1966" Century	Gold	25.5"	1.56"	Mortise & Tenon	Mahogany	3-ply Lam. Maple	3-ply Lam. Maple	Kinman "Sweet Neck" P-90		Master Volume, Master Tone	Locktone Stopbar/ Tune-o-matic	Wilkinson Vintage, 14:1 ratio
Matt Heafy "SnØfall" Les Paul Custom	Nickel	24.75"	1.69" 1.875"- 7	Set/Glued-in, Access heel	Mahogany, Phenolic	Mahogany	Plain Maple veneer	EMG-85 Active, EMG 707- 7	MG-81 Active, EMG 81-8- 7	2 Volume, 2 Tone	Locktone Stopbar/ Tune-o-matic	Deluxe Die-cast, 14:1 ratio
Joe Bonamassa 1958 "Amos" Flying-V	Gold	24.75"	1.69"	Deep Set, Glued-in	Korina (African Limba)	Korina (African Limba)		Epiphone ProBucker-2	Epiphone ProBucker-3	Bridge Volume, Neck Volume, Master Tone	Locktone Stopbar/ Tune-o-matic	Epiphone Deluxe, 18:1 ratio
Tommy Thayer "White Lightning" Explorer	Nickel	24.75"	1.69"	Mortise & Tenon	Mahogany	Mahogany	Plain Maple veneer	Seymour Duncan JB Humbucker	Seymour Duncan JB Humbucker	Bridge Volume, Neck Volume, Master Tone	Locktone Stopbar/ Tune-o-matic	Mini-Grover Rotomatic, 18:1 ratio



Ltd. Ed. Lee Malia Explorer™ Custom Artisan Outfit

The second signature model designed with Lee Malia of Bring Me the Horizon. Featuring the classic Explorer profile in Lee's signature Walnut finish with a Gibson USA® P-94 single coil and 84T-LM™ humbucker pickup, vintage style "Artisan" inlay, and custom gigbag with hand-signed Certificate of Authenticity.



P-94/
84T-LM Humbucker



Ltd. Ed. Lee Malia RD Custom Artisan Outfit

Lee Malia's third signature model featuring the rare 70s era "RD" design in Lee's signature Walnut finish, Gibson USA® P-94 single coil and 84T-LM™ humbucker pickups with coil-splitting, vintage style "Artisan" inlay with gold hardware, and a custom gigbag with hand-signed Certificate of Authenticity.



P-94/
84T-LM Humbucker



Ltd. Ed. Richie Faulkner Flying-V® Custom Outfit

The premier signature guitar from the legendary lead guitarist for Judas Priest. Featuring a classic Flying-V with EMG™ active pickups, a Floyd Rose® Tremolo & bridge, and tailpiece with R2 Locking Nut, Grover® Rotomatic machine heads, and a custom designed gig bag and hand-signed Certificate of Authenticity.



66/57
Actives



Ltd. Ed. Björn Gelotte Les Paul® "Jotun" Custom Outfit

The second premier signature model from Björn Gelotte of In Flames. Featuring a classic Les Paul Custom with EMG Metalworks pickups, LockTone™ "Nashville-Style" Tune-o-matic bridge, a Custom Hard Case with a "B.I.G" logo in gold, and a Hand Signed Certificate of Authenticity, binder, and photograph. Gelotte has also added a stainless steel bottle opener on the back of the guitar!

Color: Bone White



81/85
Actives



**Ltd. Ed. Slash Les Paul®
Standard Plustop PRO
Premium Outfit**

Hand-signed by Slash and limited to only 100 guitars worldwide! Featuring a Slash-designed Les Paul with a AAA Flame Maple Veneer top, Anaconda Burst finish, Ebony fingerboard, Seymour Duncan® "Slash" Humbuckers, Sprague "Orange Drop" capacitors, Hard Case with Slash "Skull and Top Hat" logo, custom designed leather guitar strap, and Certificate of Authenticity.



Slash APH-2
Humbuckers

**Ltd. Ed. Slash Les Paul®
Standard Plustop PRO**

Slash's fourth signature Epiphone Les Paul featuring a classic Les Paul with a AAA Flame Maple Veneer top, Anaconda Burst finish, Ebony fingerboard, Seymour Duncan® "Slash" Humbuckers, Sprague "Orange Drop" capacitors, and a Certificate of Authenticity.



**Ltd. Ed. Jason Hook "M-4"
Explorer™ Outfit**

The debut Signature model by the legendary lead guitarist of Five Finger Death Punch. Featuring Seymour Duncan® SH-1 Vintage '59 and SH-4 "JB" Humbuckers, Grover® Locking mini-Rotomatics™, a Premium Custom Gigbag, and a hand-signed COA in a presentation binder



SH-1/SH-4 "JB"
Humbuckers



Signature/ Limited Edition



Model	Hardware	Scale	Nut Width	Neck Joint	Neck Materials	Body Wood	Top Wood	Neck Pickup	Bridge Pickup	Controls	Tailpiece/ Bridge	Machine Heads
Lee Malia Explorer Custom Artisan	Gold	24.75"	1.69"	Set, Glued-in	Mahogany	Mahogany	Maple	Gibson USA P-94	Gibson USA 84T-LM	Neck Volume, Bridge Volume w/ Coil-Splitting, Master Tone	Locktone Stopbar/ Tune-o-matic	Premium Die-cast, 14:1 ratio
Lee Malia RD Custom Artisan	Gold	24.75"	1.69"	Set, Glued-in	Mahogany	Mahogany	Maple	Gibson USA P-94	Gibson USA 84T-LM	Neck Volume, Bridge Volume w/ Coil-Splitting, Master Tone	Locktone Stopbar/ Tune-o-matic	Premium Die-cast, 14:1 ratio
Richie Faulkner Flying-V Custom	Nickel	24.75"	1.69"	Set, Glued-in	Mahogany	Mahogany		EMG-66 Active	EMG-57 Active	Master Volume	Floyd Rose Tremolo 1000-Series	Grover Rotomatic, 18:1 ratio
Björn Gelotte Les Paul Custom	Gold	24.75"	1.69"	Set, Glued-in	Mahogany	Mahogany	Maple veneer	EMG-85 "Metalworks"	EMG-81 "Metalworks"	2 Volume, 2 Tone	Locktone Stopbar/ Tune-o-matic	Grover Rotomatic, 18:1 ratio
Joe Bonamassa 1958 "Amos" Flying-V	Gold	24.75"	1.69"	Deep Set, Glued-in	Korina (African Limba)	Korina (African Limba)		Epiphone ProBucker-2	Epiphone ProBucker-3	Bridge Volume, Neck Volume, Master Tone	Locktone Stopbar/Nashville Tune-o-matic	Epiphone Deluxe, 18:1 ratio
Jason Hook "M-4" Explorer	Nickel	24.75"	1.69"	Glued-in, Deep cutaway	Mahogany	Mahogany		Seymour Duncan SH-1 "JB"	Seymour Duncan SH-4 "JB"	Bridge Volume, Neck Volume, Master Tone	Locktone Stopbar/ Tune-o-matic	Mini-Grover Rotomatic, 18:1 ratio



Designer Collection

"1984" Explorer™ EX

The original Explorer's radical and futuristic body shape soon became the #1 choice for hard rock and metal players. The "1984" EX features a sleek new update of the classic design combined with high output active EMG™ pickups, a Mahogany body and neck, and Grover® machine heads. Colors: Alpine White, Ebony



EMG 81/85
Actives

Blueshawk™ Deluxe

A modern classic featuring with the upper bout style a Les Paul combined with the semi-hollowbody body and small f-holes of an archtop. With new P-90 PRO™ pickups plus a 6-position Rotary VariTone™. Color Finishes: Wine Red, Translucent Black, Midnight Sapphire



Wilshire™ "Phant-o-matic" Outfit

Designed with Frank Iero of My Chemical Romance, the "Phant-o-matic" is a modern version of the '60s-era Wilshire. Featuring VariTone™, KillSwitch™, and Alnico Classic™ humbuckers. Includes a deluxe Gigbag. Color: Antique Ivory

"It's a versatile guitar that can take a beating and sounds huge when you want it to. It's a fun instrument to play."
- Frank Iero

Model	Hardware	Scale	Nut Width	Neck Joint	Neck Materials	Body Wood	Top Wood	Neck Pickup	Bridge Pickup	Controls	Tailpiece/Bridge	Machine Heads
"1984" Explorer EX	Black	24.75"	1.69"	Mortise & Tenon	Mahogany	Mahogany	Mahogany	EMG-85 Humbucker	EMG-85 Humbucker	1 Volume, 1 Tone,	Locktone Stopbar/Tune-o-matic	Grover Mini-Rotomatic, 14:1 ratio
Blueshawk Deluxe	Nickel	24.5"	1.69"	Set, Glued-in	Mahogany	Mahogany w/ contoured back	AAA Flame Maple veneer	Epiphone P-90 PRO	(2) Epiphone P-90 PRO	Master Volume, Master Tone, VariTone	String-thru/Nighthawk Adjustable	Epiphone Deluxe, 18:1 ratio
Wilshire Phant-o-matic	Nickel	24.75"	1.69"	Mortise & Tenon	Mahogany	Mahogany	Mahogany	Epiphone Alnico Classic	Epiphone Alnico Classic Plus	Master Volume, VariTone, KillSwitch	Locktone Stopbar/Tune-o-matic	Wilkinson Vintage, 15:1 ratio



SG Collection

G-400 PRO

The G-400 PRO honors the historic 1966 SG®, one of the most iconic designs in rock. Powered by Alnico Classic PRO™ pickups with push/pull Coil-Tapping plus Wilkinson™ machine heads and a legendary LockTone™ Tune-O-Matic bridge. Colors: Cherry, Ebony Available Left-handed, Ebony

Pro ALNICO CLASSIC by EPIPHONE



G-400 PRO

One of the best guitar values today, the Faded G-400 has the look of a well-worn 60s era SG®. Featuring Alnico Classic™ humbuckers, Grover® machine heads, and Epiphone's LockTone™ Tune-o-matic bridge and Stopbar tailpiece. Colors: Worn Brown, Worn Cherry



G-310

The sound and look of a real SG® without the vintage price tag. Featuring Epiphone Cermaic Open-coil humbuckers and an Epiphone's LockTone™ Tune-o-matic bridge and Stopbar tailpiece. Color: Ebony

SG® Special VE

The classic SG® design with a Poplar body plus powerful Epiphone Ceramic open-coil humbuckers. A great way for new players to discover a legend at a price anyone can afford. Colors: Vintage Worn Walnut, Vintage Sunburst, Heritage Cherry Sunburst, Ebony, and Cherry.



Model	Hardware	Scale	Nut Width	Neck Joint	Neck Materials	Body Wood	Top Wood	Neck Pickup	Bridge Pickup	Controls	Tailpiece/Bridge	Machine Heads
G-400 PRO	Nickel	24.75"	1.69"	Mortise & Tenon	Mahogany	Mahogany	Mahogany	Epiphone Alnico Classic PRO	Epiphone Alnico Classic PRO	2 Volume w/ Coil-Splitting, 2 Tone	Locktone Stopbar/Tune-o-matic	Wilkinson Vintage Classics, 14:1 ratio
G-310	Nickel	24.75"	1.69"	Bolt-on	Mahogany	Mahogany	Mahogany	Epiphone 650R Open-coil	Epiphone 700T Open-coil	2 Volume, 2 Tone	Stopbar/Tune-o-matic	Premium Covered 14:1 ratio
SG Special VE	Nickel	24.75"	1.69"	Bolt-on	Mahogany	Poplar	Mahogany veneer	Epiphone Alnico Classic	Epiphone Alnico Classic Plus	Master Volume, Master Tone	Stopbar/Tune-o-matic	Premium Covered 14:1 ratio

Oct. 10, 1939. H. S. S. NSHINE 2,175,325
INSTRUMENTS
Filed Nov. 10, 1937

Introducing Epiphone's Premier Pickups

Boutique pickups for guitars and bass anyone can afford.

Epiphone's PRO™ series pickups make the sound of hand-made boutique pickups affordable to everyone. Whether you're looking for a classic tone or something new, Epiphone's new line of premier pickups can take you there.

ProBucker™ Humbucker

Epiphone's ProBucker™ humbuckers have fooled experts, vintage purists, and even luthiers who have worked with the best vintage guitars from the 50s and 60s. That's because each Epiphone ProBucker™ is made with the same materials used to create the first generation of humbuckers made at the Epiphone & Gibson factory in Kalamazoo, Michigan factory in the late 50s. Featuring sand cast Alnico II magnets, high quality 4-conductor lead wire, and 18% Nickel Silver unit bases and covers, the same alloy used by Gibson. Even the bobbins used on ProBuckers™ duplicate the size and shape of Gibson humbuckers, the gold standard in the industry. With the new ProBucker™, Epiphone now offers players the confidence that any instrument they purchase with ProBucker™ pickups will have that classic rock and roll patent applied for ("P.A.F.") tone.

Alnico Classic PRO™

Epiphone's Alnico Classic PRO™ humbuckers utilize powerful Alnico V magnets along with matched windings on each coil. The result is a focused output with clear highs, a tight bass response, and just the right amount of bite. Perfect for all styles from rock to jazz. The added power of the Alnico V magnet makes this pickup well suited for rock styles that require more drive and presence.

P-90 PRO™

Like vintage P-90s, the Epiphone P-90 PRO™ is a sensitive pickup that easily bends to a player's unique touch. With its distinctive growl and wide range, the P-90 PRO™ is great for rock and roll, pop, jazz, and country. Featuring 18% Nickel Silver covers designed and tooled with new bobbins manufactured to historic dimensions, Elektrisola magnet wire, sand cast Alnico V magnets, and pole shoes manufactured using the correct alloys and made to Gibson dimensions. And for you sticklers to detail, the new Epiphone P-90 PROs™ also have tin plated brass base plates like those used on 50s and 60s era Gibson P-90 pickups.

Ceramic Plus™ Humbucker

Ceramic Plus™ humbuckers are modern high output pickups designed to provide a tight low-end response with both a smooth mid-range and a slightly more pronounced cut on the top end. Ceramic Plus™ pickups also excel at high volume offering incredible sustain, drive, and harmonic content. Modern amps are a great match for Ceramic Plus™ pickups, providing all the color and character of a classic humbucker but with the cutting drive that can keep up with intense volumes, fast and super articulate players. Featuring 18% Nickel silver unit bases, bobbins tooled to exact Gibson specifications, Elektrisola Magnet wire, and powered by Ceramic 8 magnets.

ProBucker™ FB270 Pickup

"The Epi's play and sound better than the originals." Joe Bonamassa

The new Ltd. Ed. Joe Bonamassa "Treasure" Firebird-I is powered by the new ProBucker™ FB270 pickup, redesigned at Epiphone to the original specifications of Gibson Firebird pickups from the mid 60s. Accept no substitutes! The ProBucker™ FB270 is made with two Alnico II bar magnets used as blades in coils along with a steel reflector plate to achieve the classic Firebird tone of the 60s. Because the DC resistance is around 7.85Kohm, the ProBucker FB270 provides a clean, brighter output with incredible touch sensitivity and a warm low end compared to mini humbuckers, which are used in most Firebird reissues.

ProBucker™ 760 Bass Pickup

The new ProBucker™ 760 Bass Pickup is based upon vintage 1960s era Gibson Thunderbird and Embassy pickups (Gibson part #PU-760). The ProBucker™ 760 pickups are made with 18% Nickel Silver covers, German manufactured Elektrisola Magnet Wire, Alnico IV sand cast magnets, and braided coaxial lead wire for that legendary mid-range punch and growl that defined rock and roll.



Pro BUCKER™
by EPIPHONE

Pro ALNICO
CLASSIC
by EPIPHONE



Pro P-90 single
coil
by EPIPHONE

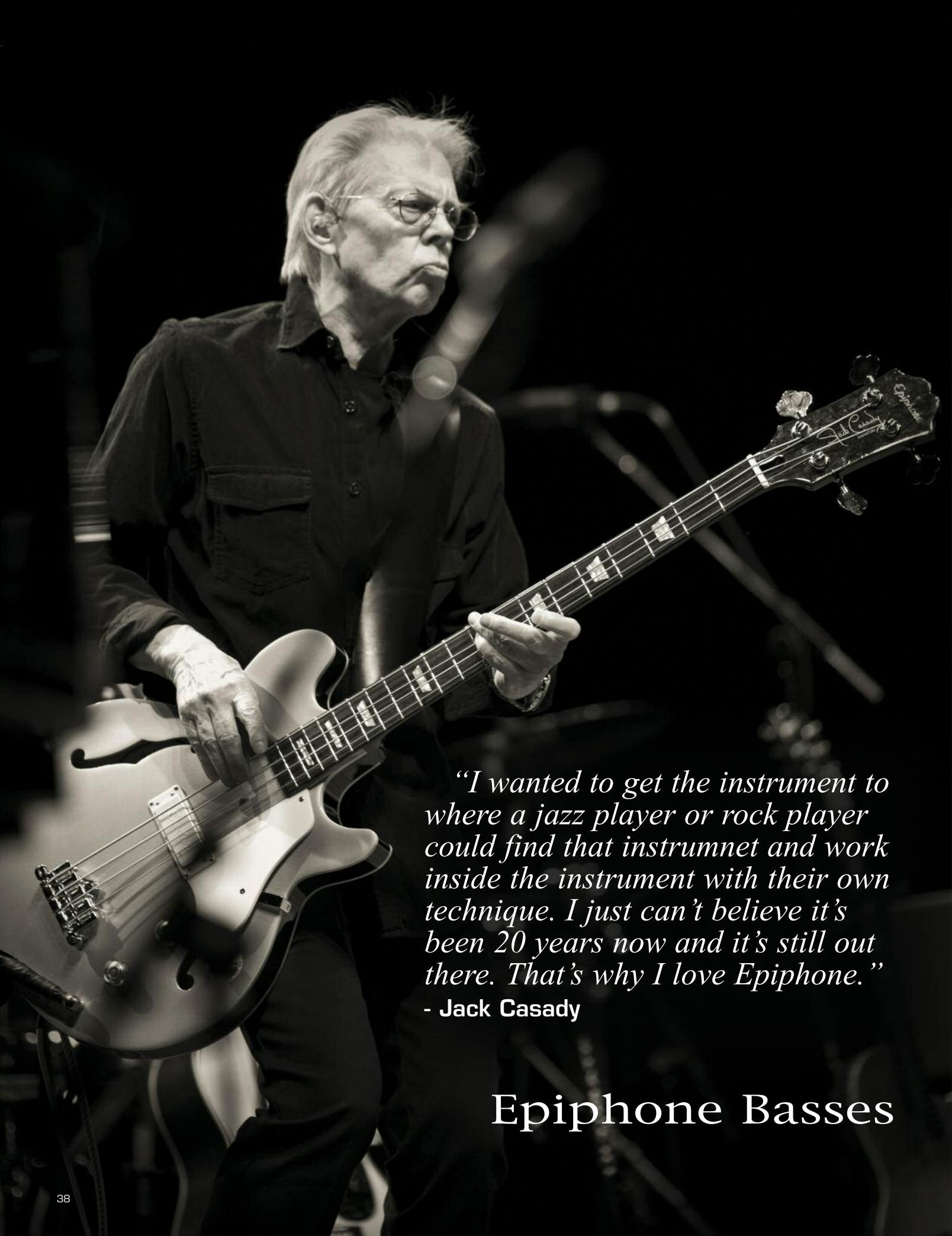
CERAMIC *Plus*
by EPIPHONE



Pro BUCKER
FB720
by EPIPHONE

Pro BUCKER
760 BASS
by EPIPHONE





“I wanted to get the instrument to where a jazz player or rock player could find that instrument and work inside the instrument with their own technique. I just can’t believe it’s been 20 years now and it’s still out there. That’s why I love Epiphone.”

- Jack Casady

Epiphone Basses



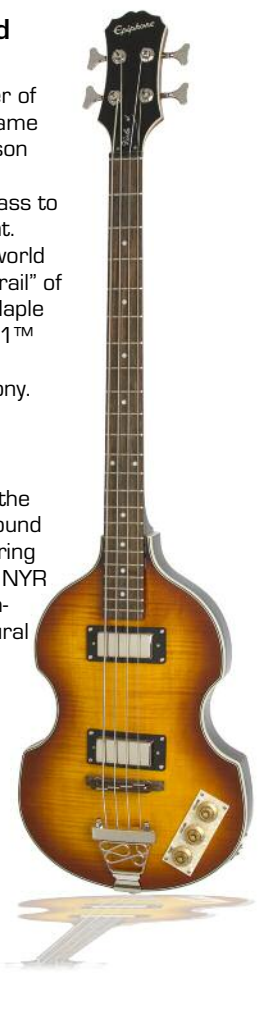
Jack Casady Signature Bass

Jack Casady, a member of the Rock & Roll Hall of Fame and co-founder of Jefferson Airplane and Hot Tuna, designed his signature bass to be his 'dream' instrument. Today, pros around the world refer to it as the "Holy Grail" of bass tone. Featuring a Maple body with a custom JCB-1™ low impedance pickup. Colors: Metallic Gold, Ebony.



Allen Woody Ltd Ed Rumblekat™

Jack Casady, a member of the Rock & Roll Hall of Fame and co-founder of Jefferson Airplane and Hot Tuna, designed his signature bass to be his 'dream' instrument. Today, pros around the world refer to it as the "Holy Grail" of bass tone. Featuring a Maple body with a custom JCB-1™ low impedance pickup. Colors: Metallic Gold, Ebony.



Viola™ Bass

The Viola offers the classic look and sound of the 60s. Featuring a Maple neck and NYR and NYT mini humbuckers for a natural woody tone. Color: Vintage Sunburst



ProBUCKER 760 BASS by EPIPHONE

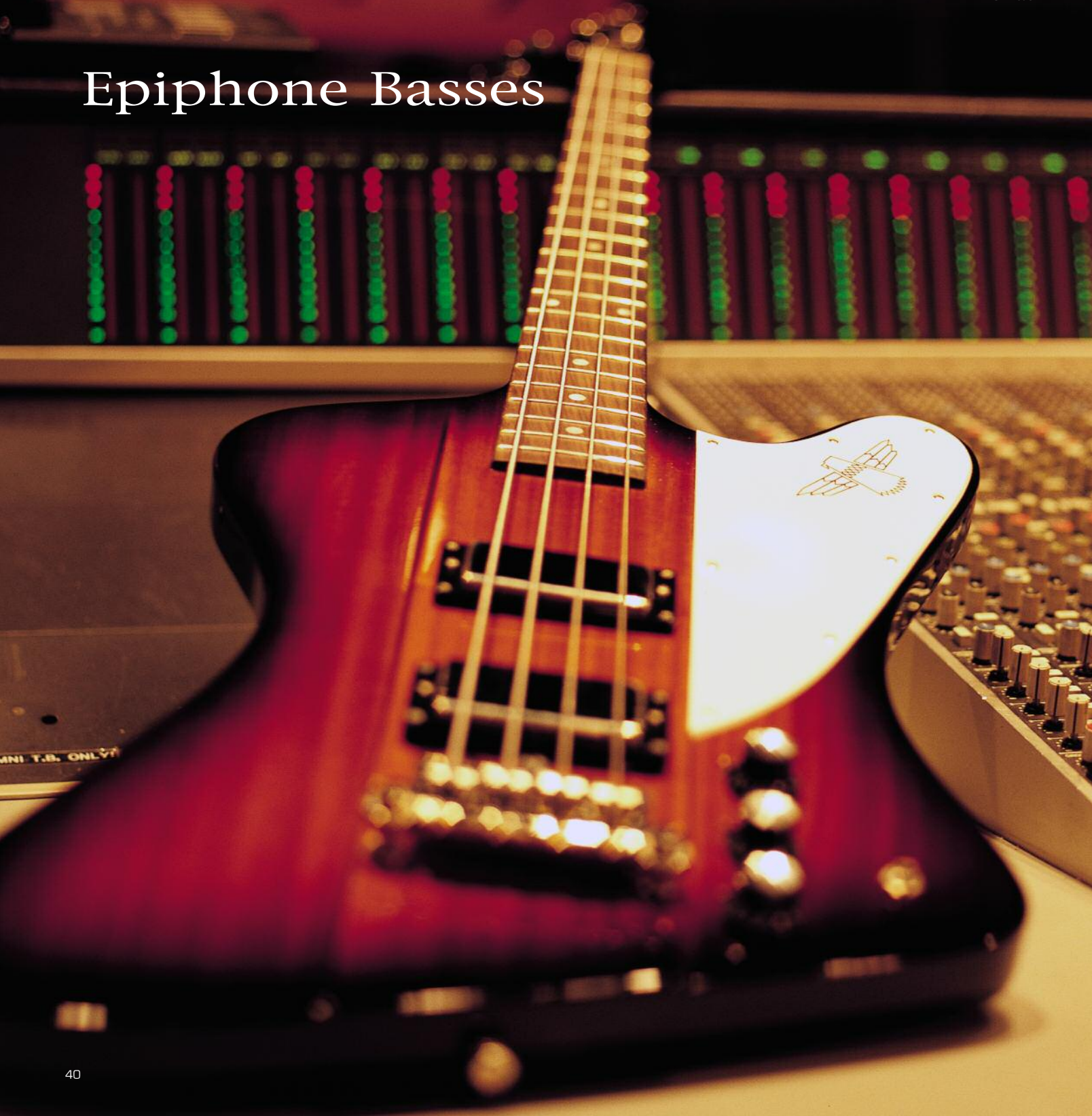
Embassy™ PRO Bass

The new Embassy PRO Bass is inspired by the rare 60s classic and commemorates the 60th anniversary of Epiphone joining the Gibson Family of Brands. Featuring the new ProBucker 760 Bass Humbucker and improved hardware including a Tune-o-matic bridge, a 60s inspired "claw" tailpiece, and 2-on-a-side premium 17:1 ratio turners for better balance. Colors: Antique Ivory, Dark Cherry, and Ebony.

Model	Hardware	Scale	Nut Width	Neck Joint	Neck Materials	Body Wood	Top Wood	Neck Pickup	Bridge Pickup	Controls	Tailpiece/Bridge	Machine Heads
Jack Casady Bass	Nickel	34"	1.69"	Set, Glued-in	Mahogany	Maple	Maple	JCB-1 Low-Impedance HB		Master Volume, Master Tone, VariTone	3-Point Adjustable	Die-cast "Clover", 19:1 ratio
Allen Woody RumbleKat Bass	Gold	30"	1.68"	Set, Glued-in	Mahogany	Mahogany	Mahogany	NYR Mini-Humbucker	NYT Mini-Humbucker	2 Volume, 2 Tone	3-Point Adjustable	Premium Die-cast, 17:1 ratio
Viola Bass	Nickel	30.5"	1.65"	Set, Glued-in	Maple	Maple	FlameMaple veneer	NYR Mini-Humbucker	NYT Mini-Humbucker	2 Volume, 1 Tone	Vintage Trapeze, Rosewood Compensated	Premium Die-cast, 17:1 ratio
Embassy Bass	Nickel	34"	1.625"	Set, Glued-in	Mahogany	Mahogany	Mahogany	Epiphone ProBucker 760 Bass	Epiphone ProBucker 760 Bass	Master Volume, Master Tone, Blend	60s "Claw", 60s Tune-o-matic Adjustable	Premium Die-cast, 17:1 ratio

Model	Hardware	Scale	Nut Width	Neck Joint	Neck Materials	Body Wood	Top Wood	Neck Pickup	Bridge Pickup	Controls	Tailpiece/Bridge	Machine Heads
Thunderbird Vintage PRO Bass	Nickel	34"	1.50"	Through-Neck	7-ply Mahogany/Walnut	Mahogany Wings		Epiphone ProBucker 760 Bass	Epiphone ProBucker 760 Bass	2 Volume, Master Tone	60s "Claw", 60s Tune-o-matic Adjustable	Open-gear "Clover", 19:1 ratio
Thunderbird PRO-IV Bass	Black	34"	1.50"	Through-Neck	7-ply Mahogany/Walnut	Mahogany Wings		Epiphone T-PRO, Active	Epiphone T-PRO, Active	Master Volume, Blend High EQ, Low EQ (active)	Flush-mount Adjustable	Premium Die-cast, 17:1 ratio
Thunderbird-IV Bass	Black	34"	1.50"	Bolt-on	Hard Maple	Mahogany		Epiphone TB-Plus	Epiphone TB-Plus	2 Volume, 1 Tone	3-Point, Adjustable	Premium Die-cast, 17:1 ratio
EB-3 Bass	Nickel	34"	1.50"	Set, Glued-in	Mahogany	Mahogany		Epiphone Sidewinder	Epiphone Sidewinder	2 Volume, 2 Tone, VariTone	3-Point, Adjustable	Open-gear "Clover", 19:1 ratio
EB-0 Bass	Nickel	30.5"	1.50"	Bolt-on	Mahogany	Mahogany	Mahogany	Epiphone Sidewinder		1 Volume, 2 Tone,	3-Point, Adjustable	Open-gear "Clover", 19:1 ratio

Epiphone Basses





Thunderbird™ Vintage PRO-IV

The Epiphone Thunderbird Vintage PRO Bass is an incredibly accurate reproduction of the classic electric bass first introduced in 1963 that has since powered dozens of hits by artists like The Who, Lynyrd Skynyrd, and Cheap Trick. Featuring new ProBucker™ 760 Bass Humbuckers and a vintage style Claw Tailpiece. Colors: Alpine White, Ebony, and Tobacco Sunburst.



Thunderbird IV™ PRO Bass

The Thunderbird PRO-IV is the ultimate rock and roll electric bass. First released in 1963, the Thunderbird Pro-IV combines classic design with cutting edge technology and all for a price that every bassist can afford. Colors: Vintage Sunburst, Natural Oil.



Thunderbird-IV™ Bass

A rock classic since 1963, the Thunderbird's unique zig-zag body design and "reverse" headstock was the brainchild of legendary automotive designer and visionary Ray Dietrich. The Epiphone Thunderbird-IV includes all the classic features plus Epiphone TB™-Plus bass humbuckers. Colors: Vintage Sunburst



EB-3 Bass

The breakthrough "SG" design of the early 60s extended to basses as well and the EB-3 quickly became one of the most popular basses in rock. Featuring a classic Sidewinder™ and New York Mini-humbucker, VariTone, Mahogany neck and 34" scale. Colors: Ebony, Cherry



EB-O Bass

Inspired by one of the great rock basses of the '60s, the EB-O has classic SG™ styling matched with an unbeatable Sidewinder™ humbucker pickup along with a Mahogany body and a 30.5" SlimTaper™ "D" Mahogany Cherry



Professional Features at an Affordable Price.

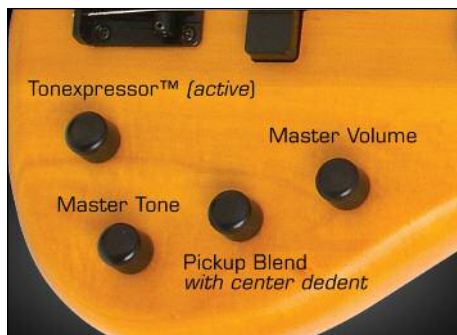
TOBIAS®



Toby™ Deluxe-IV

Toby™ Deluxe-V

Toby™ Standard-IV



Toby Deluxe Controls



Toby Back



Toby Standard Controls

Toby™ Deluxe-IV (satin)

The Toby Deluxe IV puts a new twist on the modern Toby design. Featuring Tobias TBT™ and TBR™ Split Humbuckers, an Active Tonexpressor™ Bass Enhancement Control, knurled all-metal knobs, a Radiata body, and a 34" scale Hard Maple neck. Colors: Trans Red, Trans Amber, Trans Black, Walnut.

Toby™ Deluxe-V

Go for five with the Toby Deluxe V, featuring Tobias SCR™ and SCR™ split-humbucker pickups, a 34" Hard Maple neck, an Active Tonexpressor™ Bass Enhancement Control, and a 1.90" nut to accommodate the low B 5th string. Colors: Vintage Sunburst, Ebony, Trans Red.

Toby™ Standard-IV

Inspired by Michael Tobias' groundbreaking bass designs, the Toby Standard IV puts cutting edge tone in the hands of all musicians. Featuring the classic Tobias ergonomic body profile, Tobias TBR™ and TBT™ pickups, and a pickup blend control. Colors: Alpine White, Ebony.

Model	Hardware	Scale	Nut Width	Neck Joint	Neck Materials	Body Wood	Top Wood	Neck Pickup	Bridge Pickup	Controls	Tailpiece/Bridge	Machine Heads
Toby Deluxe-IV	Black	34"	1.69"	Bolt-on	Hard Maple	Radiata	Radiata	Tobias TBR Split HB Bass	Tobias TBT Split HB Bass	Master Volume, Blend, Master Tone, Active ToneEx	Flush-mount, Fully Adjustable	Premium Die-cast, 17:1 ratio
Toby Deluxe-V	Black	34"	1.90"	Bolt-on	Hard Maple	Radiata	Radiata	Tobias SCR Split HB Bass	Tobias SCT Split HB Bass	Master Volume, Blend, Master Tone, Active ToneEx	Flush-mount, Fully Adjustable	Premium Die-cast, 17:1 ratio
Toby Standard-IV	Black	34"	1.65"	Bolt-on	Hard Maple	Radiata	Radiata	Tobias TBR Split HB Bass	Tobias TBT Split HB Bass	Master Volume, Blend, Treble Cut, Bass Cut	Flush-mount, Fully Adjustable	Premium Die-cast, 17:1 ratio



Epiphone[®] PRO-1[™]

Designed by Professionals
to be **Easy to Play!**

Epiphone PRO-1[™] Explorer[™]. Performance Pack with Rocksmith[®]

The PRO-1[™] Explorer Performance Pack with Rocksmith[®] for Mac or PC features the legendary Explorer electric guitar powered by new Ceramic humbuckers. PRO-1 Packs are the fastest way to learn guitar and have everything you need to start playing guitar right away. Featuring Real Tone Cable, Built-In Shadow[®] E-Tuner, and MityPRO[™] Mini-Amp. Colors: Ebony, Silver Sunburst, and Alpine White.

Epiphone PRO-1[™] Les Paul[®] Jr. Performance Pack with Rocksmith[®]

The PRO-1[™] Les Paul Jr. Performance Pack with Rocksmith[®] for Mac or PC features the historic Les Paul Jr. with powerful Ceramic pickups and everything you need to start playing right away. Includes Real Tone Cable, Built-In Shadow[®] E-Tuner, and MityPRO[™] Mini-Amp. Colors: Ebony, Vintage Sunburst, and Alpine White.

*Optional: AccessoryPRO[™] Steel Kit
Classic: AccessoryPRO[™] Nylon Kit*



Model	Hardware	Scale	Nut Width	Neck Joint	Neck Materials	Body Wood	Top Wood	Neck Pickup	Bridge Pickup	Controls	Tailpiece/ Bridge	Machine Heads
PRO-1 Les Paul Jr.	Nickel	24.75"	1.69", NuBone	Bolt-on	Hard Maple	Mahogany	Mahogany	Epiphone 700T Zebra-coil HB	Epiphone 700T Zebra-coil HB	Master Volume, Master Tone	Stopbar, Tune-o-matic	Premium Die-cast, 18:1 ratio
PRO-1 Explorer	Nickel	24.75"	1.69" NuBone	Bolt-on	Hard Maple	Mahogany	Mahogany	Epiphone 700T Zebra-coil HB	Epiphone 700T Zebra-coil HB	Master Volume, Master Tone	Stopbar, Tune-o-matic	Premium Die-cast, 18:1 ratio

Learning to play guitar is difficult. But that doesn't mean your guitar has to be.

Presenting the Epiphone PRO-1™ Collection designed by pros at Epiphone and Gibson to be easy to play. And when we say "easy", we mean it! PRO-1 guitars feature innovative features like an EZ-Profile™ short scale neck, ultra light strings, PRO-Ease™ string lubricant for smooth fretting, a pinless string-through bridge for each string changing, pro-quality 18:1 ratio tuners, and a thinner body that's easy to hold. Learning to play guitar just got fun again!

And like all Epiphone and Gibson Instruments, PRO-1 guitars come with a Limited Lifetime Warranty. Easy to own. Easy to play!



PRO-1™ Acoustic

The easiest way to learn guitar! The PRO-1 is a terrific first step into the world of guitar featuring all of the PRO-1 Collection's innovative features including an EZ-Profile™ short scale neck and Custom PRO-Prietary™ Bracing.

PRO-1™ Classic (Classical Guitar)

The PRO-1 Classic is modeled after the world's top classical guitars and features the same tonewoods used to make the best classical instruments. The PRO-1 Classic's balanced sound and PRO features makes it easy for a new player to discover their unique "voice" on guitar. Featuring all of the PRO Collection's breakthrough innovations.

PRO-1™ Plus Acoustic (Solid Top)

The PRO-1 Plus features a Solid Spruce top for superior sound with beautiful 5-layer Ivory and Black binding plus all of the PRO-1 Collection's breakthrough innovations.

PRO-1™ Ultra (Acoustic/Electric)

When you're ready to play live, plug in with the PRO-1 Ultra™. Featuring the Shadow® Performer Preamp and NanoFlex™ pickup system that will deliver your guitar's true acoustic tone on any size stage.

Model	Hardware	Scale	Nut Width	Neck Joint	Neck Materials	Body Wood	Top Wood	Neck Pickup	Bridge Pickup	Controls	Tailpiece/Bridge	Machine Heads
PRO-1 Acoustic	Nickel	24.75"	1.68"	Set, Glued-in	Mahogany	Select Mahogany	Select Spruce				GraphTech NuBone, Comp saddle	Epiphone Deluxe, 18:1 ratio
PRO-1 Plus Acoustic	Nickel	24.75"	1.68"	Set, Glued-in	Mahogany	Select Mahogany	Solid Spruce				GraphTech NuBone, Comp saddle	Epiphone Deluxe, 18:1 ratio
PRO-1 Ultra Acoustic/Electric	Nickel	24.75"	1.68"	Set, Glued-in	Mahogany	Select Mahogany	Solid Spruce		Shadow NanoFlex	Performer preamp w/ Master Volume, Bass EQ, Treble EQ, Anti Feedback, Built-in Tuner	GraphTech NuBone, Comp saddle	Epiphone Deluxe, 14:1 ratio
PRO-1 Classic	Nickel	1.75"	1.75"	Set, Glued-in	Mahogany	Select Mahogany	Solid Cedar				GraphTech NuBone, Comp saddle	Epiphone Deluxe, 18:1 ratio



FREE
eMedia
 Award Winning
 On-Line lessons

**Slash "AFD" Les Paul®
 Performance Pack**

Designed by Slash as the ultimate pack for beginners and pros alike. Featuring a Les Paul Special-II in classic Appetite Amber finish with built-in tuner, premium gig bag, a 2-channel 15-watt Slash "Snakepit" amp w/EQ, headphone output, custom Slash signature picks, and free online lessons from eMedia™. Color: Appetite Amber

The Pack Collection



FREE
eMedia
 Award Winning
 On-Line lessons

Les Paul® Player Pack

Featuring a Les Paul Special-II LE with powerful humbuckers plus a 10-watt Electar guitar amp with 10ft guitar cable. Includes clip-on headstock chromatic tuner, guitar strap, medium picks, and gigbag. Plus, free download lessons from eMedia™. Colors: Vintage Sunburst, Ebony

Model	Hardware	Scale	Nut Width	Neck Joint	Neck Materials	Body Wood	Top Wood	Neck Pickup	Bridge Pickup	Controls	Tailpiece/Bridge	Machine Heads
Slash "AFD" Les Paul Special-II	Nickel	24.75"	1.69"	Bolt-on	Mahogany	Mahogany	AAA Flame Maple veneer	Ceramic Plus Zebra-coil	Ceramic Plus Zebra-coil/E-Tuner	Master Volume, Master Tone	Locktone Stopbar/Tune-o-matic	Precision Covered, 14:1 ratio
Les Paul Special VE	Nickel	24.75"	1.69"	Bolt-on	Hard Maple	Solid Wood		Epiphone 650R Open-coil	Epiphone 700T Open-coil	Master Volume, Master Tone	Stopbar/Tune-o-matic	Premium Covered, 14:1 ratio



FREE
eMedia
 Award Winning
 On-Line lessons



**PR-4E Acoustic/Electric
 Player Pack**

This fantastic all-inclusive Player's Pack includes an Epiphone PR-4E acoustic/electric guitar, an Acoustic-15 amplifier with built-in chorus, and 1/4" and XLR-mic inputs. Includes chromatic tuner, strap, cable, picks, gigbag, plus a comprehensive instructional DVD with easy guitar lessons.
 Color: Natural



FREE
eMedia
 Award Winning
 On-Line lessons



**Toby™ Bass
 Performance Pack**

Everything you need to start playing bass! Featuring a Toby™ Standard IV LE Bass with Tobias™ ergonomic Alder body design, Tobias™ pickups, pickup blend and tone controls, and a 24-fret Hard Maple neck with a smooth, satin finish. Plus an Electar-15B bass amp with 10" speaker.
 Color: Ebony

Model	Hardware	Scale	Nut Width	Neck Joint	Neck Materials	Body Wood	Top Wood	Neck Pickup	Bridge Pickup	Controls	Tailpiece/Bridge	Machine Heads
PR-4E Acoustic/Electric	Nickel	24.75"	1.69"	Set, Glued-in	Mahogany	Mahogany	Select Spruce		Piezo	3-band EQ w/ Volume	Reverse Belly	Grover Rotomatic, 18:1 ratio
Toby Standard-IV LE	Nickel	34"	1.68"	Bolt-on	Hard Maple	Alder		Tobias TBR Single-coil	Tobias TBT Single-coil	Master Volume, Blend, Bass Cut, Treble Cut	Flush-mount, Adjustable	Premium Diecast, 17:1 ratio

HATCH SHOW PRINT



WE
WANT
TO
SEE
ALL
THE
BEST
MUSICIANS
IN
NASHVILLE TENNESSEE
SINCE 1879

HATCH SHOW PRINT CO. © 1995





The Acoustics

Epiphone has always been dedicated to producing high quality professional acoustic instruments that anyone can afford. For nearly a century, Epiphone designers and luthiers have been leaders in developing acoustic guitars, archtops, banjos, and mandolins that can last a lifetime.

Making superb acoustic instruments requires incredible attention to detail, acquiring the best tone woods, and a real-world understanding of what musicians need from an instrument whether you're a pro or a pro at heart.

Of course, offering the public a selection of instruments that accommodates all of the various music styles is only part of the equation. Each instrument we make - regardless of the cost - must be easy to play and sound great in any situation. The diligent work of Epiphone's engineers and quality teams have ensured that all Epiphone instruments made today offer that same level of superior craftsmanship we see throughout the history of Epiphone.



Today's Epiphone Masterbilt® acoustic instruments are inspired by Epiphone's legendary line of guitars and mandolins first introduced in the 1930s. All Masterbilts are built with the same construction methods and attention to detail using all solid woods bodies, traditional bracing, vintage inspired inlay, bone nut and saddle, superior tuners, and solid wood tops made from the world's best tone woods. The Masterbilt® line symbolizes the quest for perfection that still drives Epiphone.

Masterbilt®

Solid-Wood Acoustics

Masterbilt® DR-500MCE Acoustic/Electric

Inspired by the 1931 classic. Featuring a Solid Sitka Spruce top, Solid Mahogany back and sides, a Mahogany neck, and a modern cutaway. Powered by an eSonic-2™ stereo preamp with built-in tuner, stereo outputs, and NanoMag™ EQ. Colors: Natural, and Vintage Sunburst



Masterbilt® EF-500RCCE Acoustic/Electric

One of the most beautiful guitars in Epiphone's Masterbilt Collection. Featuring a classic "orchestra" body shape with a generous cutaway, Solid Cedar top, bone nut and saddle, and a Mahogany "C" style neck. Perfect for fingerpicking. Includes the eSonic2™ pickup system. Color: Natural Satin



Masterbilt® AJ-45ME Acoustic/Electric

Inspired by the legendary J-45 round shoulder "jumbo," one of the most popular and influential acoustic guitars ever made. Featuring the Shadow® Sonic preamp and NanoFlex™ pickup system and Grover® Sta-Tite™ machine heads. Color: Vintage Sunburst Satin



Masterbilt® DR-400MCE Acoustic/Electric

Featuring a Solid Sitka Spruce Top with cutaway for easy access, Mahogany body and neck, bone nut, and the superb eSonic™ HD preamp system and NanoFlex-HD pickup for true acoustic sound. Colors: Faded Cherry Sunburst, Vintage Sunburst, Violin Burst and Natural Satin.

Model	Hardware	Scale	Nut Width	Neck Joint	Neck Materials	Body Wood	Top Wood	Neck Pickup	Bridge Pickup	Controls	Tailpiece/ Bridge	Machine Heads
Masterbilt DR-500MCE	Nickel	25.5"	1.69"	Set, Dovetail	Mahogany	Solid Mahogany	Solid Sitka Spruce	Shadow NanoMag	Shadow NanoFlex	eSonic-2 Stereo Preamp, Stereo Outs		Grover Sta-Tite, 18:1 ratio
Masterbilt EF-500RCCE	Gold	25.5"	1.75"	Set, Dovetail	Mahogany	Solid Ovangkol	Solid Cedar	Shadow NanoMag	Shadow NanoFlex	eSonic-2 Stereo Preamp, Stereo Outs		Grover Sta-Tite, 18:1 ratio
Masterbilt AJ-45ME	Nickel	24.75"	1.69"	Set, Dovetail	Mahogany	Solid Mahogany	Solid Sitka Spruce		Shadow NanoFlex	eSonic-HD Preamp, Soundhole mount		Grover Sta-Tite, 14:1 ratio
Masterbilt DR-400MCE	Nickel	25.5"	1.69"	Set, Dovetail	Mahogany	Solid Mahogany	Solid Sitka Spruce		Shadow NanoFlex	eSonic-HD Preamp, Soundhole mount		Grover Sta-Tite, 18:1 ratio

Acoustic/Electric





Inspired by "1964" Texan™ Acoustic/Electric

For over 60 years, the Epiphone Texan has been the choice of countless artists including Paul McCartney and Peter Frampton. Now featuring the superior Shadow NanoFlex™ pickup and Shadow Sonic™ sound-hole mounted system. Colors: Antique Natural, Vintage Cherryburst.



Dove® PRO

The historic Dove® was first introduced at the legendary Gibson & Epiphone factory in Kalamazoo in 1962. Now featuring a Fishman™ SoniTone™ sound hole preamp and Fishman™ Sonicore™ pickup system. Color: Violin Burst.



Hummingbird® PRO

Since 1960, the square shouldered Hummingbird® has been a country rock staple. Featuring the superb Shadow™ ePerformer™ preamp and Shadow™ NanoFlex™ pickup system. Color: Faded Cherry Sunburst



EL-00 PRO

Inspired by Epiphone's first flattops from the 1930s, the EL-00 PRO has superb midrange tone, short scale, and comfortable weight. Now featuring the Fishman™ SoniTone™ sound hole preamp and Fishman™ Sonicore™ pickup. Color: Vintage Sunburst

Model	Hardware	Scale	Nut Width	Neck Joint	Neck Materials	Body Wood	Top Wood	Neck Pickup	Bridge Pickup	Controls	Tailpiece/Bridge	Machine Heads
Inspired by '64 Texan	Nickel	25.5"	1.69"	Set, Dovetail	Mahogany	Solid Mahogany	Solid Spruce		Shadow NanoFlex	Shadow Sonic Soundhole mount		Vintage-style, 14:1 ratio, Cream buttons
Dove PRO	Nickel	25.5"	1.69"	Set, Dovetail	Hard Maple	Select Maple	Solid Spruce		Fishman Sonicore	Fishman Sonitone Soundhole mount		Grover, 14:1 ratio
Hummingbird PRO	Nickel	24.75"	1.69"	Set, Dovetail	Mahogany	Mahogany	Select Spruce		Shadow NanoFlex	Shadow ePerformer Preamp		Grover, 14:1 ratio
EL-00 PRO	Nickel	24.75"	1.69"	Set, Glued-in	Mahogany	Mahogany	Solid Spruce		Fishman Sonicore	Fishman Sonitone Soundhole mount		Grover Mini, 14:1 ratio

Acoustic/Electric



EJ-200SCE Acoustic/Electric

The "King of the Flat Tops," now with a spectacular cutaway for total upper fret access plus the eSonic2™ pickup system. Introduced in 1937, the J-200 set a standard for big sound that others have been trying to match ever since. Colors: Ebony, Natural, and Vintage Sunburst.



PR-5E Acoustic/Electric

An industry standard for over 20 years. The PR-5E's distinctive body shape was patterned after Epiphone's classic ES-style archtops like the Sheraton and Casino. The PR-5E has a beautiful "Florentine" cut-away and a large lower bout that provides excellent lows and a solid mid-range. Featuring the eSonic™ preamp system with NanoFlex™ pickup, tuner, and EQ. Color: Natural



Les Paul® Ukulele Outfit

The one and only Les Paul Ukulele! Featuring an under-saddle piezo pickup so you can take your Les Paul Uke to any stage in style! Includes gigbag. Colors: Vintage Sunburst, Heritage Cherry Sunburst



Dave Navarro "Jane" Acoustic/Electric

Dave Navarro of Jane's Addiction teams up with Epiphone to create an exceptionally versatile acoustic/electric guitar with superb stage sound. Featuring the eSonic™ preamp and NanoFlex™ pickup system, and an Ebony fret-board. Color: Ebony

Model	Hardware	Scale	Nut Width	Neck Joint	Neck Materials	Body Wood	Top Wood	Neck Pickup	Bridge Pickup	Controls	Tailpiece/Bridge	Machine Heads
EJ-200SCE	Gold	25.5"	1.69"	Set, Dovetail	Maple	Select Maple	Solid Spruce	Shadow NanoMag	Shadow NanoFlex	eSonic-2 Stereo Preamp, Stereo Outs		Grover Rotomatic, 18:1 ratio
PR-5E	Gold	25.5"	1.69"	Set, Glued-in	Mahogany	Mahogany	Select Spruce		Shadow NanoFlex	eSonic Preamp		Premium Diecast, 14:1 ratio
Dave Navarro "Jane"	Nickel	24.75"	1.725"	Set, Dovetail	Mahogany	Mahogany	Select Spruce		Shadow NanoFlex	eSonic Preamp		Grover Rotomatic, 18:1 ratio
Les Paul Ukulele	Nickel	15"	1.31"	Bolt-on	Mahogany	Mahogany	AAA Flame Maple veneer		Piezo Under-saddle			Grover Mini, 14:1 ratio



AJ-220SCE Acoustic/Electric

The AJ-220SCE features a Solid Sitka Spruce top with cutaway, and Shadow's new NanoFlex™ pickup and Performer Tuner™ preamp system. Colors: Natural, Ebony, and Vintage Sunburst.



AJ-210CE Acoustic/Electric Outfit

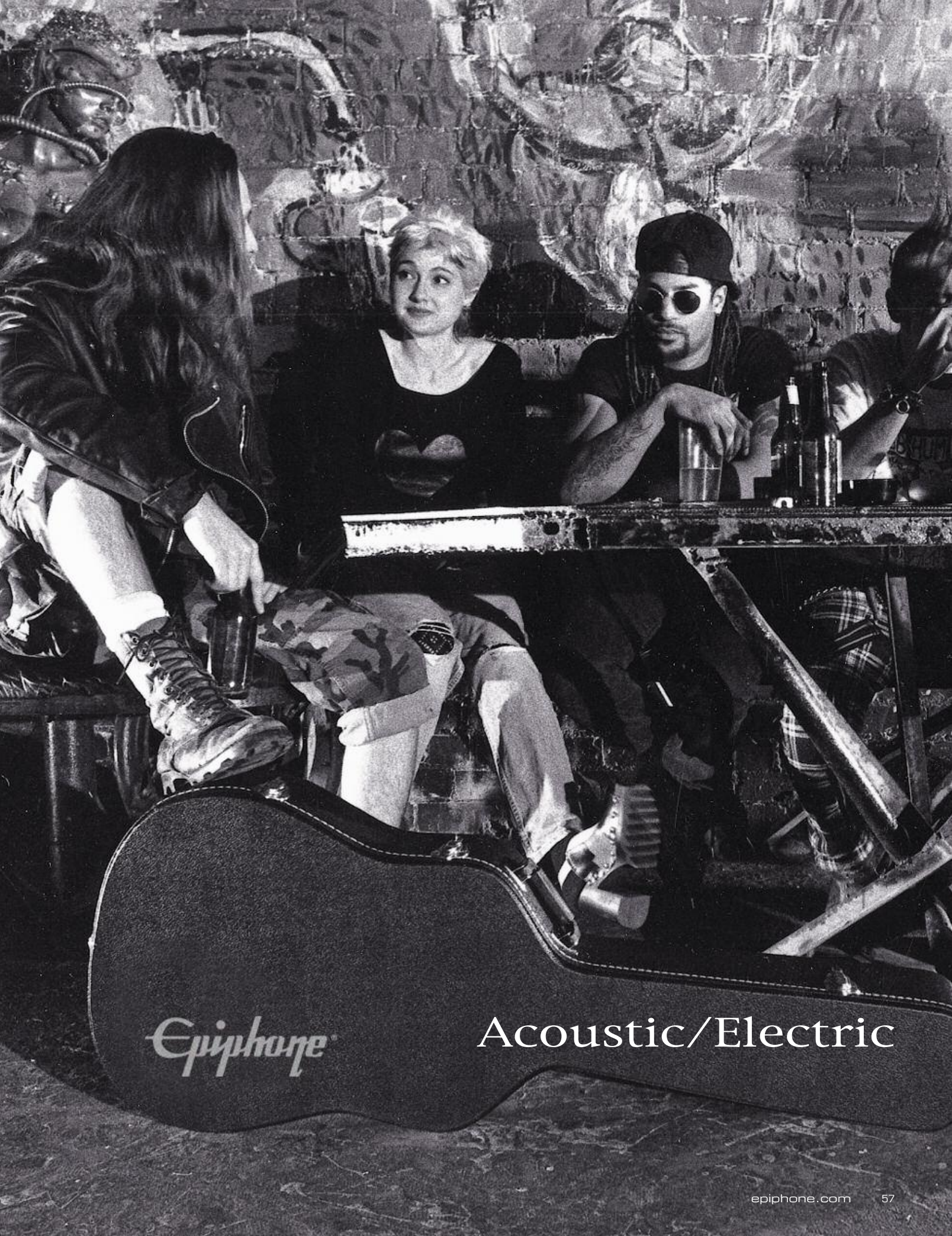
A superb professional dreadnought guitar for singer-songwriters. Featuring a Select Spruce top with classic cutaway, state of the art Shadow Performer Tuner™ Preamp, and NanoFlex™ under saddle pickup system. Includes hard case. Colors: Natural, and Vintage Sunburst.



AJ-100CE Acoustic/Electric

A perfect first-guitar for future pros. The AJ-100CE features the renowned NanoFlex™ pickup system and a beautiful cutaway for greater upper fret access and built with a century of Epiphone experience. Color: Natural

Model	Hardware	Scale	Nut Width	Neck Joint	Neck Materials	Body Wood	Top Wood	Neck Pickup	Bridge Pickup	Controls	Tailpiece/Bridge	Machine Heads
AJ-220SCE	Nickel	25.5"	1.69"	Set, Glued-in	Mahogany	Mahogany	Solid Sitka Spruce	Shadow NanoFlex	Shadow NanoFlex	Shadow Performer Tuner Preamp		Epiphone Premium, 15:1 ratio
AJ-210CE	Nickel	25.5"	1.69"	Set, Glued-in	Mahogany	Mahogany	Select Spruce	Shadow NanoFlex	Shadow NanoFlex	Shadow Performer Tuner Preamp		Premium Diecast, 14:1 ratio
AJ-100CE	Nickel	25.5"	1.69"	Set, Glued-in	Mahogany	Mahogany	Select Spruce	Shadow NanoFlex	Shadow NanoFlex			Premium Diecast, 14:1 ratio



Epiphone

Acoustic/Electric



Acoustics



AJ-220S Acoustic

The AJ-220S is a classic “Advanced Jumbo” style acoustic that’s been part of the Epiphone and Gibson catalogs for generations. Featuring a Solid Sitka Spruce top and a Select Mahogany body and neck. Colors: Vintage Sunburst, and Natural.



DR-100 Acoustic

Epiphone’s most popular acoustic guitar with the look, sound, and build quality that first-time players and pros expect when from Epiphone. Featuring a Select Spruce top, Mahogany body and neck, and premium tuners. Colors: Ebony, Natural, and Vintage Sunburst.



DR-212 Acoustic 12-String

The DR-212 is a big toned 12-string acoustic guitar designed to provide a strong and balanced tone. Featuring a Select Spruce top, Mahogany body, and a Mahogany neck. Color: Natural

Model	Hardware	Scale	Nut Width	Neck Joint	Neck Materials	Body Wood	Top Wood	Machine Heads
AJ-220S	Nickel	25.5"	1.69"	Set, Glued-in	Mahogany	Mahogany	Solid Sitka Spruce	Epiphone Premium, 15:1 ratio
DR-100	Nickel	25.5"	1.69"	Set, Glued-in	Mahogany	Mahogany	Select Spruce	Epiphone Premium, 15:1 ratio
DR-212	Nickel	25.5"	1.75"	Set, Glued-in	Mahogany	Mahogany	Select Spruce	Epiphone Premium, 15:1 ratio



Bluegrass

Mayfair™ 5-String Banjo

A recreation of Epiphone's 1920s masterpiece that helped make the "House of Stathopoulos" one of the premier instrument makers in New York. Featuring a Mahogany Resonator, classic Mayfair inlay, traditional headstock design, and Remo® head.



Stagebird™ 6-String Electric Banjo

Featuring the state-of-the-art Magnetic Stagebird™ humbucker. Plus, a black Remo® banjo head and historic "Dovewing" headstock design with "Epiphone" banner logo.



MB-100 Banjo

The perfect traveling banjo and ideal for fans of traditional bluegrass and stringband music. Open back banjos are lightweight (*easy on the shoulder!*) and known for their mellow tone.



Electar Century Inspired by "1939" Century Lap Steel Outfit

A beautiful reissue of the Art Deco-styled Hawaiian lap steel guitar designed by Herb Sunshine, Epiphone's legendary salesman, electronics developer, and friend of founder Epi Stathopoulos. Includes: Deluxe Gigbag

Model	Hardware	Scale	Nut Width	Neck Joint	Neck Materials	Body Wood	Top Wood	Pickup	Controls	Tailpiece/Bridge	Machine Heads
Mayfair 5-String Banjo	Nickel	26.375"	1.25"	Traditional	Mahogany	Mahogany	Remo, White			Traditional, Maple, Ebony cap	Traditional banjo, 15:1 ratio
Stagebird 6-String Electric Banjo	Nickel	25.5"	1.69"	Traditional	Mahogany	Mahogany	Remo, Black	Magnetic Matfair, Humbucker	Master Volume	Traditional, Maple, Ebony cap	Grover Mini-Rotomatic, 14:1 ratio
Century Lap Steel	Nickel	22.5"	2.5"	1 piece	Mahogany	Mahogany	Mahogany	Epiphone 500B "Blade" HB	Master Volume, Master Tone		Deluxe 3-in-line, 18:1 ratio
MB-100 Banjo	Nickel	26.25"	1.25"	Bolt-on	Mahogany	Mahogany	Remo, White			Aluminum, Steel cover	Epiphone Premium, 15:1 ratio



Masterbilt® MM-40L Mandolin

A classic Epiphone design and one of the first Masterbilt® instruments. Featuring an oval sound hole, a Solid Spruce top, Solid Maple body, Grover® machine heads, and a traditional Masterbilt headstock in a beautiful aged gloss Vintage Sunburst finish.



The NanoMag can slide back towards the bridge for a brighter tone or forward towards the neck for a warmer tone and anywhere in between.



On the pickguard are Master Volume, Treble and Bass rotary controls as well as an easy-access battery compartment.

MM-50E Professional Electric Mandolin

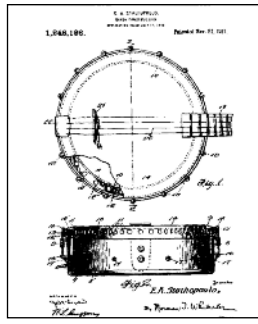
The Epiphone MM-50E Professional "F"-style Mandolin combines innovation and classic design that players have come to expect from Epiphone. The MM-50E is the first mandolin featuring the Quad NanoMag™ pickup system that allows players to adjust the output level of each individual string pair. These features, combined with the classic Lloyd Loar era F-Style body shape and neck, make the MM-50E a one-of-a kind instrument. Color: Vintage Natural

MM-30S "A" Style Mandolin

The MM-30S is a classic Epiphone A-style mandolin. Featuring a Solid Spruce top, a Mahogany body and neck, and gold hardware. Color: Antique Sunburst



Model	Hardware	Scale	Nut Width	Neck Joint	Neck Materials	Body Wood	Top Wood	Pickup	Controls	Tailpiece/Bridge	Machine Heads
Masterbilt MM-40L Mandolin	Nickel	13.86"	1.14"	Set, Glued-in	Hard Maple	Solid Maple	Solid Maple			Traditional	Grover, 18:1 ratio
MM-50E Professional Electric Mandolin	Nickel	14"	1.06"	Set, Glued-in	Maple	Flame Maple	Solid Sitka Spruce	Quad NanoMag Adjustable	Volume, Treble, Bass, String Output Trim pots	Traditional	Vintage In-line, 14:1 ratio
MM-30S Mandolin	Gold	14"	1.06"	Set, Glued-in	Mahogany	Mahogany	Solid Spruce			Traditional	Vintage In-line, 14:1 ratio



Dobro® Hound Dog M-14 Metal Body (Round Neck)

Epiphone presents new Dobro® Hound Dog M-14 Metal Body guitar with an easy to play Round Neck. The new Dobro® Hound Dog M-14 Metal Body, brought to you by Epiphone, is the perfect instrument for players who want the beautiful articulation of a metal body guitar for blues, fingerpicking, jazz, or even light slide for classic Delta or Hawaiian styles.

- Model: Dobro Hound Dog M-14 Metal Body - Round Neck
- Hardware: Nickel
- Scale: 24.75"
- Neck Joint: Tapered dovetail
- Nut Width: 1.75"
- Neck Material: Mahogany round neck
- Body: Bell Brass, Nickel Plating
- Machine Heads: Grover Mini-Rotomatic, 18:1 ratio

Dobro® Hound Dog Deluxe (Square Neck)

The Dobro® resonator guitar has been an American classic since its arrival in the early 1920s. Now Epiphone and Dobro keep that tradition alive with the Dobro® Hound Dog Deluxe Square Neck, an American icon ready for the 21st century with a Fishman™ Resonator Pickup.

- Model: Dobro Hound Dog Deluxe Square Neck
- Hardware: Nickel
- Scale: 25"
- Neck Joint: Glued In
- Nut Width: 2" raised
- Neck Material: Mahogany square neck
- Top Wood: Laminated Flame Maple
- Body Wood: Laminated Flame Maple
- Machine Heads: Grover Rotomatic, 18:1 ratio
- Pickup: Fishman™ Resonator Pickup
- Color: Vintage Brown

Dobro® Hound Dog (Round Neck)

An American classic, the Dobro® resonator guitar has been part country, blues, and bluegrass since its arrival in the early 1920s. The wood resonator or resophonic style guitar became a national phenomenon thanks to shows like WLS Barndance, the Grand Ole Opry, and countless other coast-to-coast broadcasts.

- Model: Dobro™ Hound Dog Round Neck
- Hardware: Nickel
- Scale: 25"
- Neck Joint: Glued In
- Nut Width: 1.75"
- Neck Material: Mahogany round neck
- Top Wood: Laminated Maple
- Body Wood: Laminated Maple
- Machine Heads: Grover Rotomatic, 18:1 ratio
- Color: Vintage Brown

Dobro® Hound Dog Deluxe (Round Neck)

The American classic Dobro® goes 'modern' with a Fishman™ Resonator pickup. The Dobro® Hound Dog Deluxe Round Neck resonator guitar has been part of country, blues, and bluegrass since its arrival in the early 1920s. The Dobro® Hound Dog Round Neck is perfect for players who want that sound with regular action.

- Model: Dobro Hound Dog Deluxe Round Neck
- Hardware: Nickel
- Scale: 25"
- Neck Joint: Tapered dovetail
- Nut Width: 1.75"
- Neck Material: Mahogany round neck
- Top Wood: Laminated Flame Maple
- Body Wood: Laminated Flame Maple
- Machine Heads: Grover Rotomatic, 18:1 ratio
- Pickup: Fishman Resonator Pickup
- Color: Vintage Brown



Jumbo Hard Case



ES Style Hard Case



Vintage Les Paul Hard Case



SG Hard Case



Explorer Hard Case



Flying-V Hard Case



Thunderbird Hard Case



Dreadnought Hard Case



Banjo Hard Case



F-Style Mandolin Hard Case



A-Style Mandolin Hard Case



Premium Gigbag

Notice: In order to continually improve the quality and performance of our products and make use of the best available components, Epiphone reserves the right to change prices and specifications without notice.

Cases



Les Paul Hard Case



Firebird Hard Case



EL-00 Hard Case



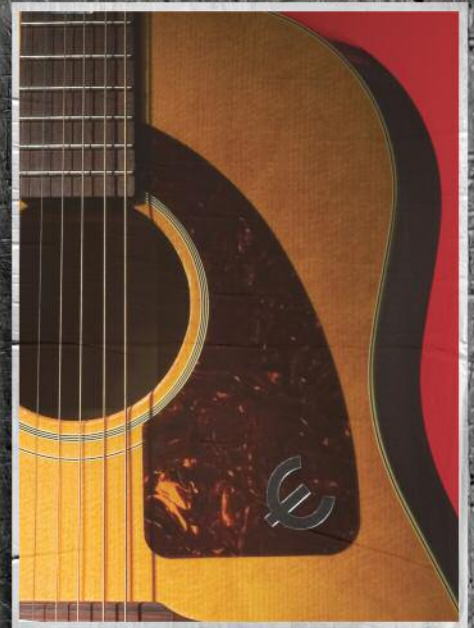
Standard Gigbag



Epiphone

www.epiphone.com

Epiphone Guitar Co.
A Part of Gibson Brands
1510 Elm Hill Pike, Suite 212
Nashville, Tennessee
37210 USA



All Epiphone products are guaranteed and backed by Gibson Musical Instruments
24/7 Customer Service
at 1-800-444-2766 - Toll-Free USA only
In Europe at 00+800-444-2766-1
In China at 1-800-820-8841
IM Gibson Customer Service at
customer.service1@gibson.com

See warranty card for details or visit
www.epiphone.com.
Guarantee varies country to country.
Check your authorized Epiphone retailer
or details.

In order to continually improve the quality and performance of our products and make use of the best available components, Epiphone reserves the right to change prices and specifications without notice.

